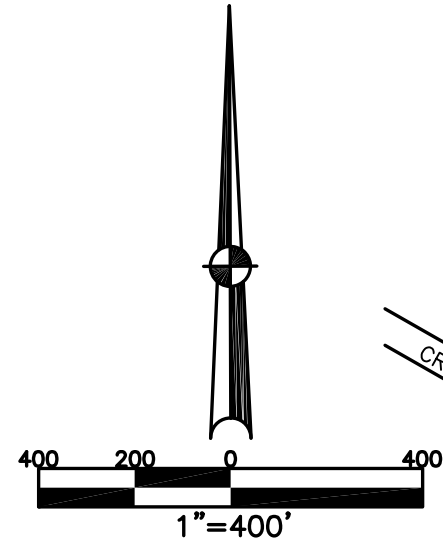


NEWBERRY TWP.  
MIAMI COUNTY, OHIO

SECTION 18 TOWN 8 RANGE 5

PLAT 18

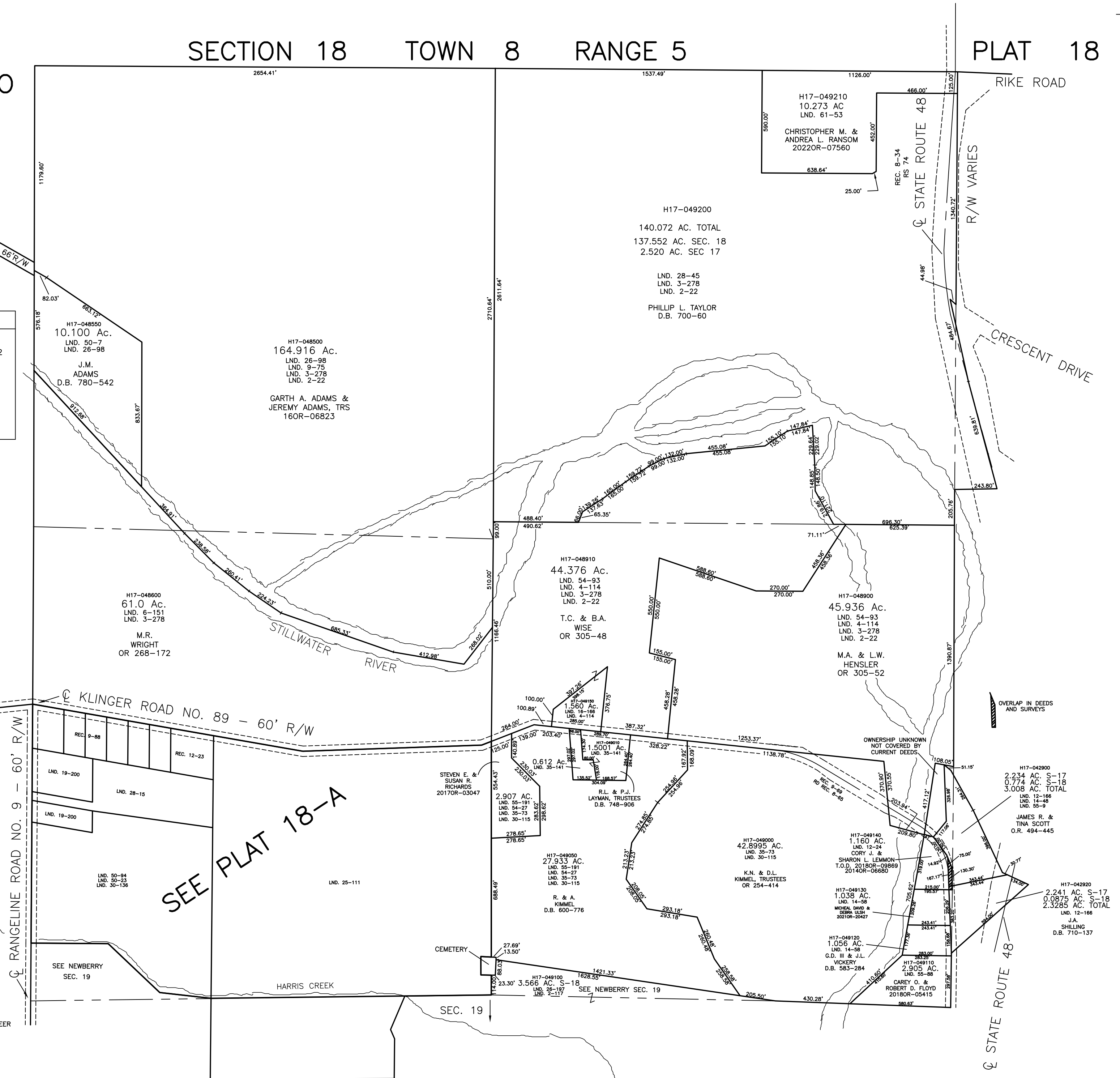


**ABBREVIATION LEGEND**

OR 167-214	= OFFICIAL RECORD 167 PAGE 214
D.B. 613-172	= DEED BOOK 613, PAGE 172
REC. 15-72	= RECORDER'S PLAT BOOK 15, PAGE 72
LND. 33-15	= LAND SURVEY VOLUME 33, PAGE 15
LOT 19-12	= LOT SURVEY VOLUME 19, PAGE 12
R.R. 8-29	= ROAD RECORD VOLUME 8, PAGE 29
R/W	= RIGHT OF WAY
CL	= CENTERLINE
AC.	= ACRES
TWP.	= TOWNSHIP
TR.	= TRACT
②	= LOT CREATED BY RECORDER'S PLAT

**SURVEY INDEX**

NORTHWEST QUARTER		
LND. 2-22		
LND. 3-278		
LND. 6-151		
LND. 9-75		
LND. 26-98		
LND. 50-7		
NORTHEAST QUARTER		
LND. 2-22		REC. 8-34
LND. 3-278		RS 74
LND. 4-114		
LND. 24-28		
LND. 28-45		
LND. 61-53		
SOUTHWEST QUARTER		
LND. 2-22	LND. 50-94	REC. 9-88
LND. 3-278	LND. 55-9	REC. 12-23
LND. 6-151		
LND. 9-75		
LND. 19-200		
LND. 25-111		
LND. 28-15		
LND. 30-136		
LND. 50-23		
SOUTHEAST QUARTER		
LND. 2-22	LND. 30-115	REC. 9-69
LND. 2-117	LND. 35-73	RD REC. 8-65
LND. 3-278	LND. 54-27	
LND. 4-114	LND. 54-93	
LND. 12-24	LND. 55-9	
LND. 12-166	LND. 55-88	
LND. 14-48	LND. 55-191	
LND. 14-58		
LND. 16-166		
LND. 26-197		



PREPARED BY: MIAMI COUNTY ENGINEER'S MAP DEPARTMENT  
PAUL P. HUELSKAMP, P.E. P.S., COUNTY ENGINEER  
DATE: DECEMBER 14, 2012 DV  
REVISED: May 13, 2022 MSTORMS