

NEWBERRY TWP.

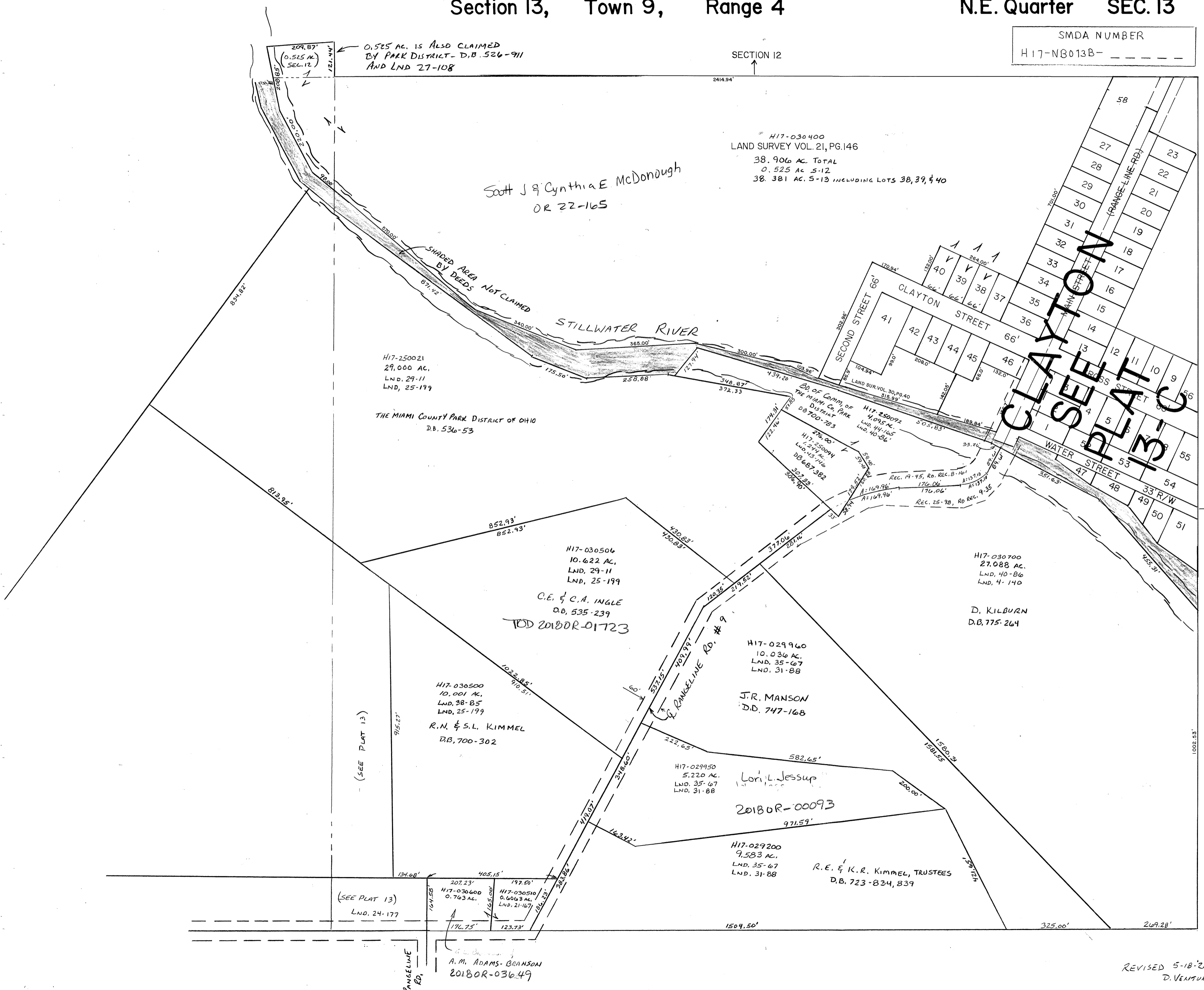
MIAMI COUNTY, OHIO

PLAT 13-B

Section 13, Town 9, Range 4

N.E. Quarter SEC. 13

SMDA NUMBER
H17-NB013B-



0.525 AC. IS ALSO CLAIMED BY PARK DISTRICT - D.B. 526-911 AND LND 27-108

SECTION 12

H17-030400
LAND SURVEY VOL. 21, PG. 146
38.906 AC. TOTAL
0.525 AC. S-12
38.381 AC. S-13 INCLUDING LOTS 38, 39, & 40

Scott J & Cynthia E. McDonough
OR 22-165

H17-250021
29,000 AC.
LND. 29-11
LND. 25-199
THE MIAMI COUNTY PARK DISTRICT OF OHIO
D.B. 536-53

H17-030506
10.622 AC.
LND. 29-11
LND. 25-199
C.E. & C.A. INGLE
D.B. 535-239
TOD 2018OR-01723

H17-030500
10.001 AC.
LND. 38-85
LND. 25-199
R.N. & S.L. KIMMEL
D.B. 700-302

H17-029960
10.036 AC.
LND. 35-67
LND. 31-88
J.R. MANSON
D.D. 747-168

H17-030700
27,088 AC.
LND. 40-86
LND. 4-140
D. KILBURN
D.B. 775-264

H17-029950
5,220 AC.
LND. 35-67
LND. 31-88
Lori L. Jessup
2018OR-00093

H17-029200
9,583 AC.
LND. 35-67
LND. 31-88
R.E. & K.R. KIMMEL, TRUSTEES
D.B. 723-834, 839

H17-030600
0.763 AC.
LND. 21-167
H17-030510
0.6053 AC.
LND. 21-167
A.M. ADAMS-BRANSON
2018OR-03649

REVISED 5-18-2016
D. VENTURA