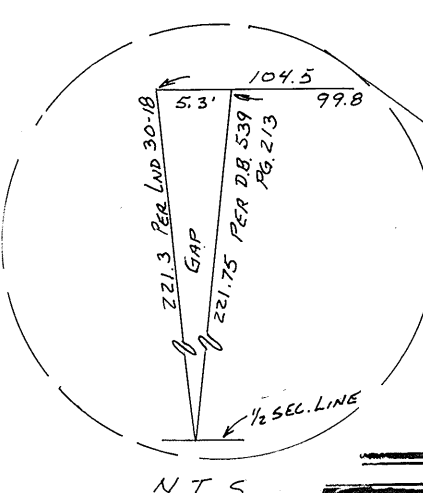


- Surveys -
- Vol. 3 Page 282 - S. Cen. Pt. N 1/2 Sec.
- Vol. 4 Page 20 - Cen. Pt. S.W.
- Vol. 4 Page 140 - S. Cen. Pt. N.E.
- Vol. 4 Page 354 - W. Pt. S.E.
- Vol. 6 Page 180 - N. Pt. N.E.
- Vol. 6 Page 187 - N.E. Pt. S.E.
- Vol. 11 Page 27 - E. Cen. Pt. S.E.
- Vol. 11 Page 45 - Cen. Pt. S.E.
- Vol. 11 Page 147 - S.E. Pt. S.E.
- Vol. 12 Page 190 - Tri. E. Cen. Pt. S.E.
- Vol. 13 Page 119 - Cen. Pt. E. 1/2 S.E.
- Lot 7 Page 199 - Cen. Pt. E. 1/2 N.E.
- Vol. 15 Page 25 - S.W. Cor. S.E.
- Vol. 16 Page 148 - N.W. Pt. S.E.
- Vol. 17 Page 13 - W. Pt. S.E.
- LND. 38-85
- LND. 47-73 NW Pt. SE. QTR.
- LND. 59-159
- LND. 61-83



Map showing land parcels with owners, acreage, and survey details. Key parcels include:

- Parcel 1:** 47.3385 AC, SUR. Vol. 23 PG. 156, DENEKE Farms LLC, 02-207-294, 299
- Parcel 2:** 33.549, Samuel J. Byrd, Trustee, 20210R-18327
- Parcel 3:** 36.977 AC, MIAMI COUNTY PARK DISTRICT, D.B. 628-457
- Parcel 4:** 48.723 AC, Anthony D. & Carolyn S. Iddings, 20200R-04289
- Parcel 5:** 30.328 AC, Darren & Laura Wood, 20150R-09100
- Parcel 6:** 24.839 AC, SUR. Vol. 31 PG. 88
- Parcel 7:** 14.197 AC, DENNIS E & AMANDA S. ROBINSON, 20140R-05455, 20140R-14476
- Parcel 8:** 16.908 AC, JAMES L. MILLER II & CARLA M. MILLER, 20220R-10128
- Parcel 9:** 12.675 AC, HARRIS CREEK

Other features include 'SEE PLAT 13-A', 'SEE PLAT 13-B', 'SEE PLAT 13-C', 'SEE PLAT 13-D', 'SEE PLAT 13-E', 'SEE PLAT 13-F', 'SEE PLAT 13-G', 'SEE PLAT 13-H', 'SEE PLAT 13-I', 'SEE PLAT 13-J', 'SEE PLAT 13-K', 'SEE PLAT 13-L', 'SEE PLAT 13-M', 'SEE PLAT 13-N', 'SEE PLAT 13-O', 'SEE PLAT 13-P', 'SEE PLAT 13-Q', 'SEE PLAT 13-R', 'SEE PLAT 13-S', 'SEE PLAT 13-T', 'SEE PLAT 13-U', 'SEE PLAT 13-V', 'SEE PLAT 13-W', 'SEE PLAT 13-X', 'SEE PLAT 13-Y', 'SEE PLAT 13-Z'. 'Range Line' and '60' R/W' are also indicated.

SMDA NUMBER: H17-NB013



SEC. 18

SEC. 17

SEC. 16

SEC. 15