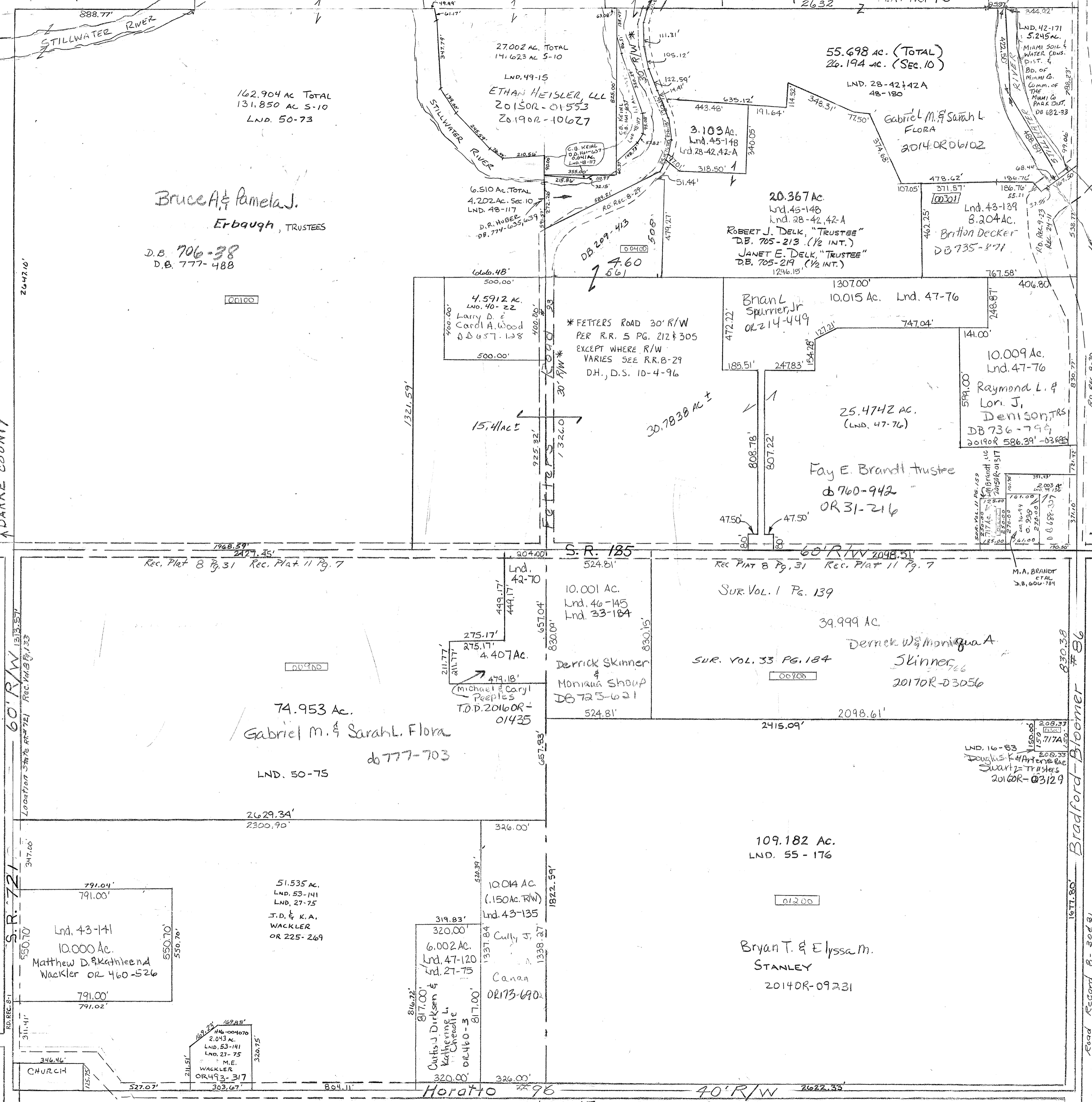


SCALE - 1" = 330'

Range 4, Town 9, Section 10, SEC. 3, Newberry Township 2632, PLAT NO. 10



NW Cor SE Qtr. - Lnd. 46-145  
SE Cor NE Qtr. - Lnd. 47-70  
SE Cor SW Qtr. - Lnd. 47-120  
N. Pt. NE Qtr. - LND. 48-180  
N. Pt. NE Qtr. - LND. 49-117

NE. Cor SW Qtr. - Lnd. 42-70  
NE. Cor. NE. Qtr. - Lnd. 42-171  
SE. Cor. SW. Qtr. - Lnd. 43-135  
E. Cor. Pt. N.E. Qtr. - Lnd. 43-139  
W. Pt. SW Qtr. - Lnd. 43-141  
NW Cor NE Qtr. - Lnd. 45-14B

Vol. 1 page 139 - 4 1/2 Sec  
Vol. 2 page 72 - Whole  
11 " 159 - SE Cor NE  
13 " 133 Location St R 721  
16 " 83 N.E. Pt. S.E

Rec. Vol. 8  
Vol. 16  
346.46'  
175.75'  
527.07'  
311.41'  
550.70'  
550.70'  
791.00'  
791.00'  
791.00'  
791.02'

DARKE COUNTY

60' R/W

S.R. 721

CHURCH

Bruce A. & Pamela J. Erbaugh, TRUSTEES

D.B. 706-38  
D.B. 777-488

74.953 Ac.  
Gabriel M. & Sarah L. Flora  
db 777-703  
LND. 50-75

27.002 AC. TOTAL  
141.623 AC S-10  
LND. 49-15  
ETHAN HEISLER, LLL  
20150R-01553  
20190R-10627

6.510 AC. TOTAL  
4.202 AC. Sec. 10  
LND. 48-117  
D.P. HUBBEE  
DB. 774-655, 659

4.5912 AC.  
LND. 40-22  
Larry D. & Carol A. Wood  
DB 657-128

15.41 ac

4.407 Ac.  
Derrick Skinner & Monique Shoup  
DB 725-621  
T.O.D. 2016OR-01435

51.535 ac.  
LND. 53-141  
LND. 27-75  
J.D. & K.A. WACKLER  
OR 225-269

10.014 AC.  
(.150 AC. R/W)  
Lnd. 43-135  
Curtis J. Dirksen & Katherine L. Cheneffe  
OR 460-3

55.698 ac. (TOTAL)  
26.194 ac. (Sec. 10)

LND. 28-42 & 42A  
48-180  
Gabriel M. & Sarah L. FLORA  
2014OR06102

20.367 Ac.  
Lnd. 45-148  
Lnd. 28-42, 42-A  
ROBERT J. DELK, "TRUSTEE"  
D.B. 705-213 (1/2 INT.)  
JANET E. DELK, "TRUSTEE"  
D.B. 705-219 (1/2 INT.)  
1246.15'

10.015 Ac. Lnd. 47-76  
Brian L. Spurrer, Jr.  
OR 214-449

25.4742 AC.  
(LND. 47-76)  
Fay E. Brandt trustee  
db 760-942  
OR 31-216

39.999 AC.  
Derrick W. & Monique A. Skinner  
SUR. VOL. 33 PG. 184  
2017OR-03056

109.182 AC.  
LND. 55-176  
Bryan T. & Elyssa M. STANLEY  
2014OR-09231

LND. 42-171  
5.245 AC.  
MIAMI SOIL & WATER CONSERVATION DIST. & BO. OF MIAMI CO. COMM. OF THE MIAMI CO. PARK DIST. DB 182-33

Lnd. 43-139  
8.204 AC.  
Britton Decker  
DB 735-871

10.009 Ac.  
Lnd. 47-76  
Raymond L. & Lori J. Denison, TRS  
DB 736-799  
2019OR 586391-03685

LND. 16-83  
Douglas K. & Artur S. Swartz-Trustees  
2016OR-03129

SMDA NUMBER  
H-10-0010

RD. REC. 8-30  
RD. REC. 8-31

Bradford - Boomer # 86

1677.80'  
Road Record 8-30d81  
REVISED: 6/20/14 AM

Horatio # 96

40' R/W

RD. REC. 8-31