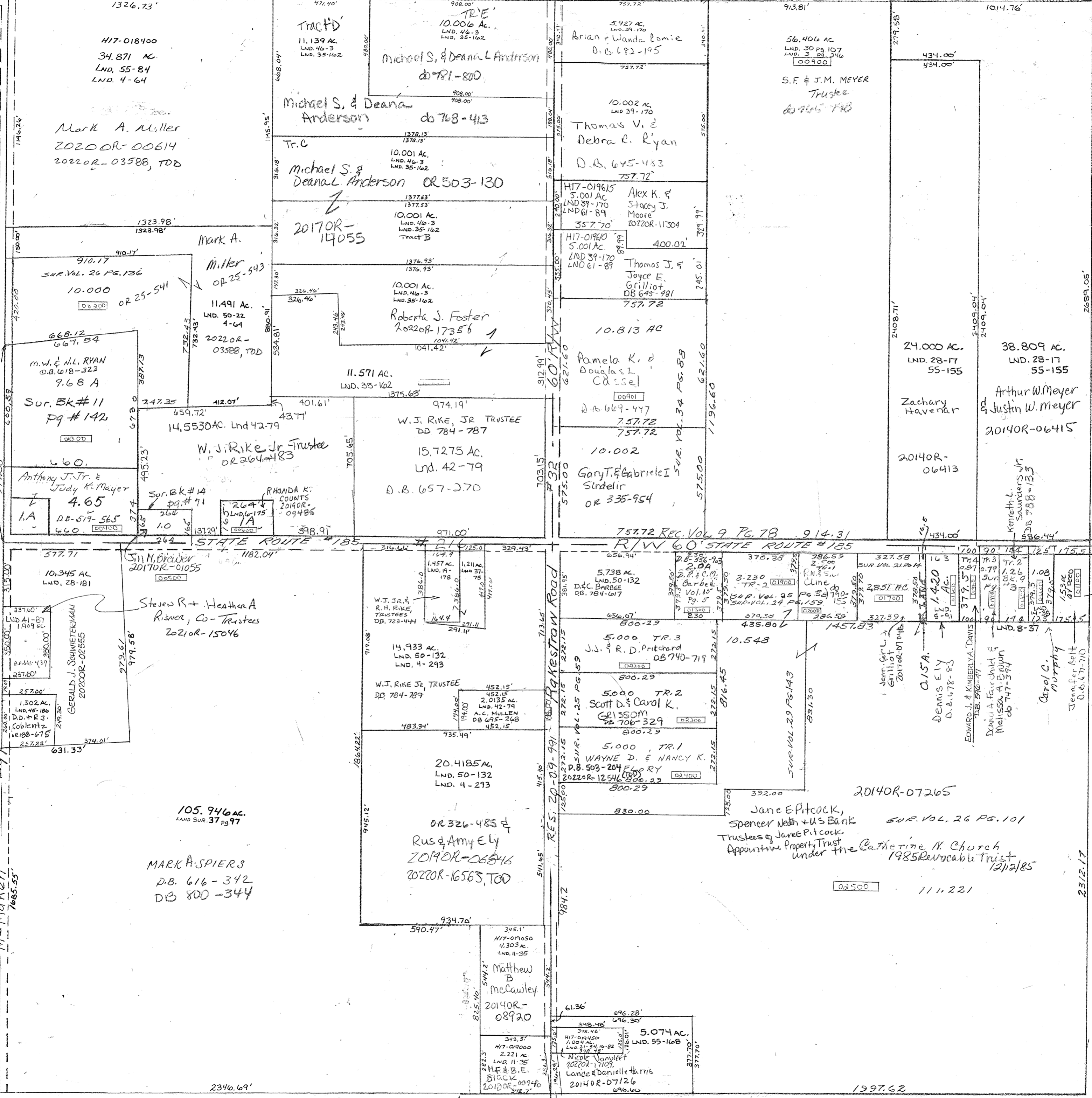
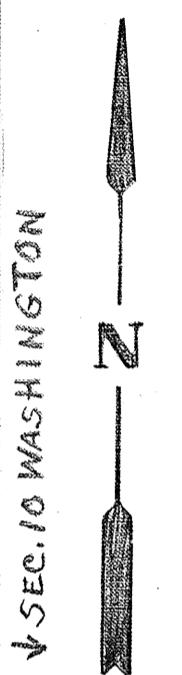


Range 5 Town 8 Section 9 SEC 7 Newberry Township PLAT NO. 9

VOL. 1 page 215 (whole)
 VOL. 3 page 346 - EPT NE
 VOL. 4 page 64 - NW QTR
 VOL. 5 page 293 - NE P1 SW
 VOL. 6 page 91 - N. Cent. P1 SE
 VOL. 175 - S. Cent. P1 NW
 LIND. 41-81 NW COR. SW
 LND. 42-79 S. P1 NW QTR.
 LND. 50-22 NW QTR.
 LND. 55-155 NE COR. NE
 LND. 55-168 SE COR. SE
 LND. 61-89 NW COR. NE
 LND. 1-19 S1 - NE COR. SE
 " 9 " 85 - NE COR. SE
 " 11 " 85 - SE COR. SW
 " 11 " 142 - SW P1 NW
 " 14 " 35 - NE COR. SE
 " 14 " 71 - S. Cent. P1 NW
 " 16 " 82 - S.W. COR. SE.



SMDA NUMBER
H17-NB009



SEC. 10 WASHINGTON

REVISED:
12.9.22

2340.69'

SEC. 16

1997.62

2312.17