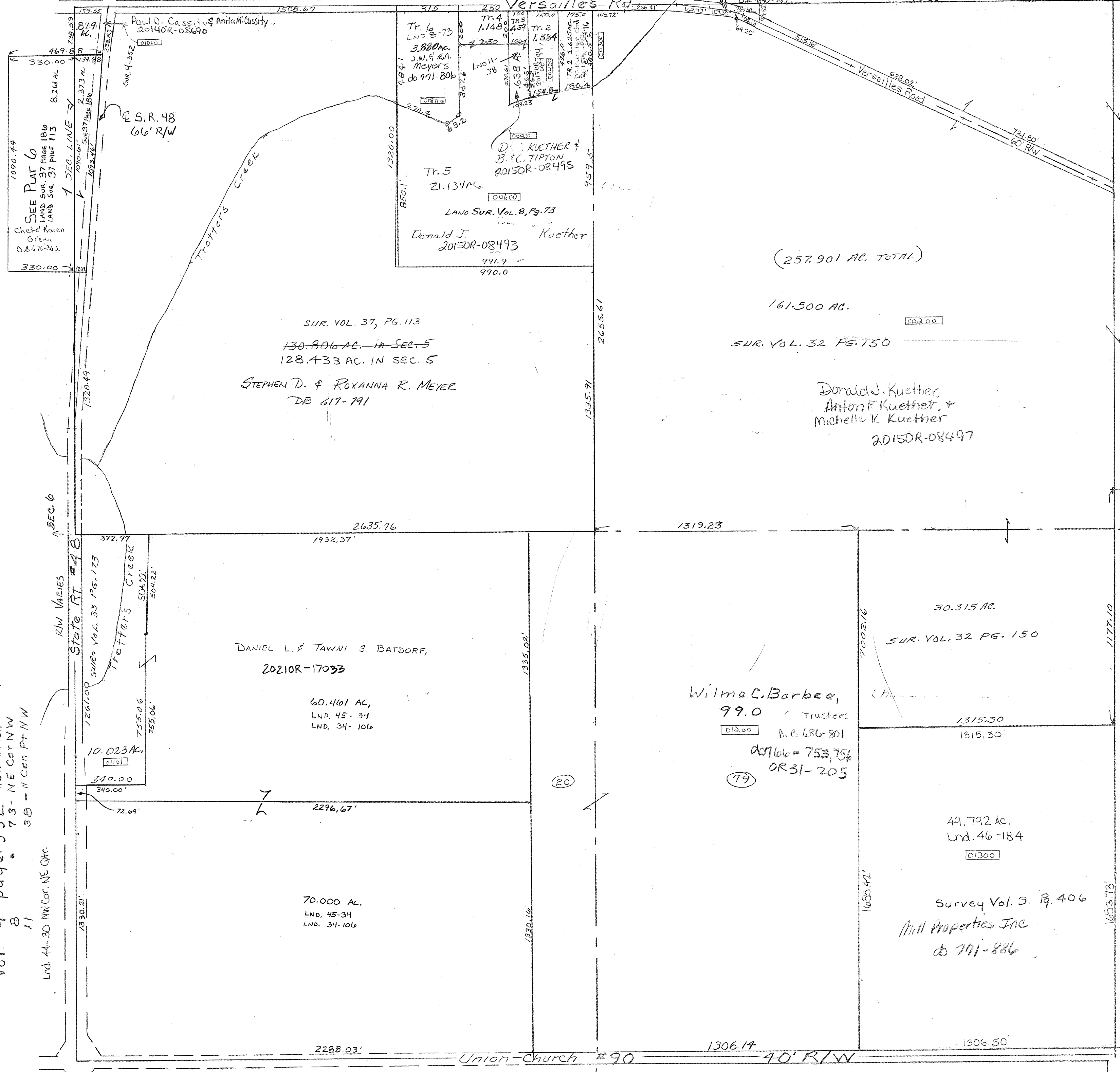


Range 5 Town 8 Section 5 Versailles Rd Newberry Township

AT NO 1922.66

SMDA NUMBER
H17-NB005

Surveys +
Vol. 2 page 178 - Whole
Vol. 3 page 406 - SE Pt SE
Vol. 4 page 352 - Relocation Start 48
3B - N Cen Pt NW
11
Lnd. 44-30 NW Cor. NE Qtr.
Lnd. 47-184 SE Pt. SE Qtr.



SEE PLAT 6
LAND SUR. 37 PAGE 180
LAND SUR. 37 PAGE 113
Chete Karen
Green
D.B. 676-242
1090.44
330.00

F.S.R. 48
66' R/W

Tr. 6
LND. 8-73
3.880 AC.
J.W. & R.A.
Meyers
db 971-806

Tr. 4
1.148
Tr. 3
4.59
Tr. 2
1.534

Tr. 5
21.134 AC.
LAND SUR. VOL. 8, Pg. 73
Donald J. Kuether
2015DR-08493

D. KUETHER &
B.C. TIPTON
2015DR-08495

991.9
990.0

SUR. VOL. 37, PG. 113
130.806 AC. IN SEC. 5
128.433 AC. IN SEC. 5
STEPHEN D. & ROXANNA R. MEYER
DB 617-191

(257.901 AC. TOTAL)

161.500 AC.

SUR. VOL. 32 PG. 150

Donald J. Kuether,
Anton F. Kuether, &
Michelle K. Kuether
2015DR-08497

DANIEL L. & TAWNI S. BATDORF,
2021OR-17033

60.401 AC,
LND. 45-34
LND. 34-106

Wilma C. Barbee,
99.0 Trustees
D.E. 686-801
ac of lot = 753,756
OR 31-205

30.315 AC.
SUR. VOL. 32 PG. 150

1315.30
1315.30

49.792 AC.
Lnd. 46-184

Survey Vol. 3, Pg. 406
Mill Properties Inc
db 771-886

70.000 AC.
LND. 45-34
LND. 34-106

2288.03'

1306.14

1306.50

Union Church #90 40' R/W

SEC. 8

SEC. 4

SEC. 6

SEC. 32