

NEWBERRY TWP.

PLAT NO. 41-C

MIAMI COUNTY, OHIO

SECTION

TOWN

RANGE

NW 1/4

36

9

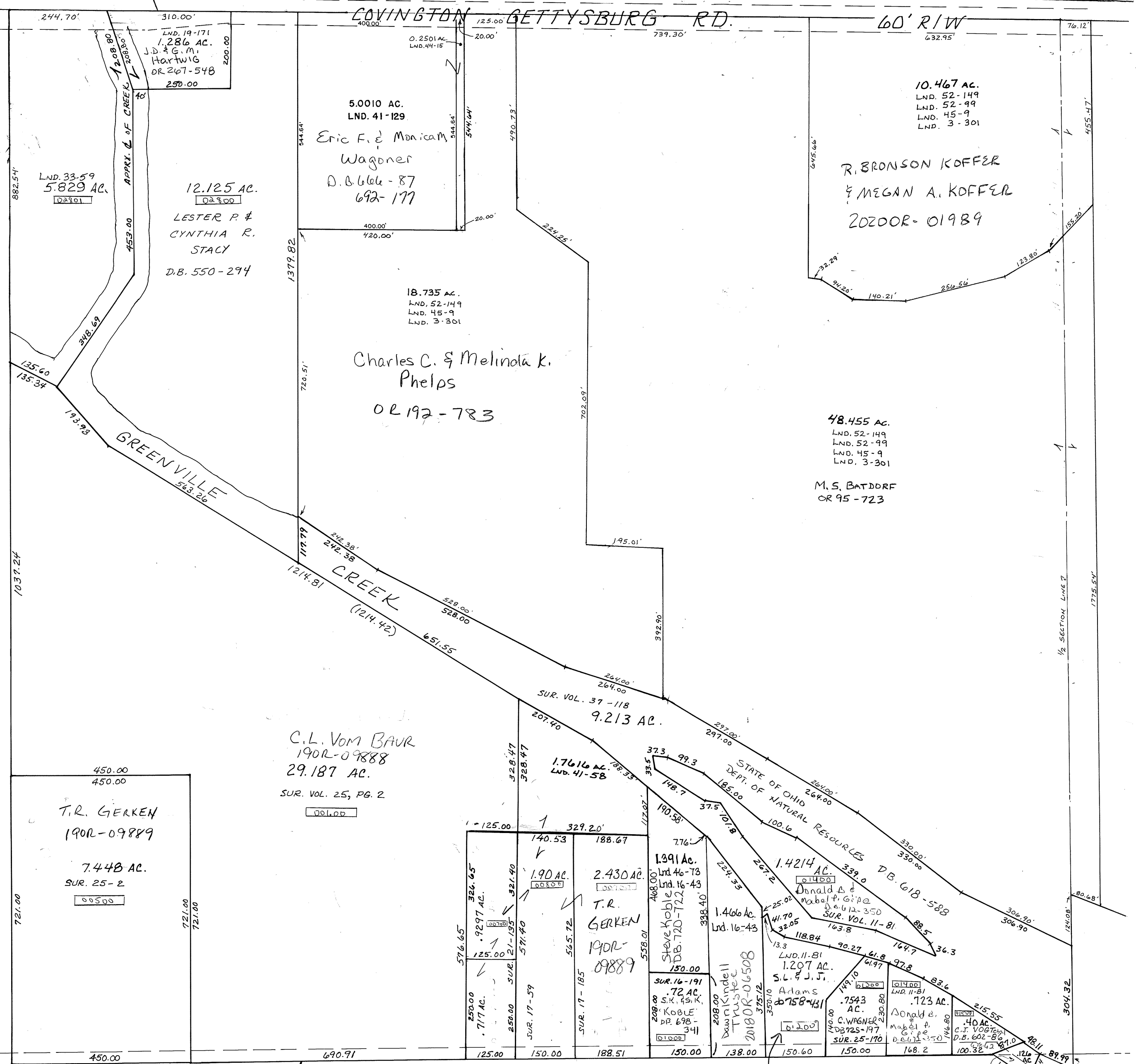
4

SCALE: 1" = 200'

2004 R/W
RD. REC. 9-32
REC. 25-96

2012 R/W
RD. REC. 9-26
REC. 24-13

SMDA NUMBER
H17-NB041



GREENVILLE FALLS RD.

TOD
2018OR-
05133

Mabel P & Donald B.
Gipe
2015OR-15760

REVISED 5-16-2016
DVENTURA