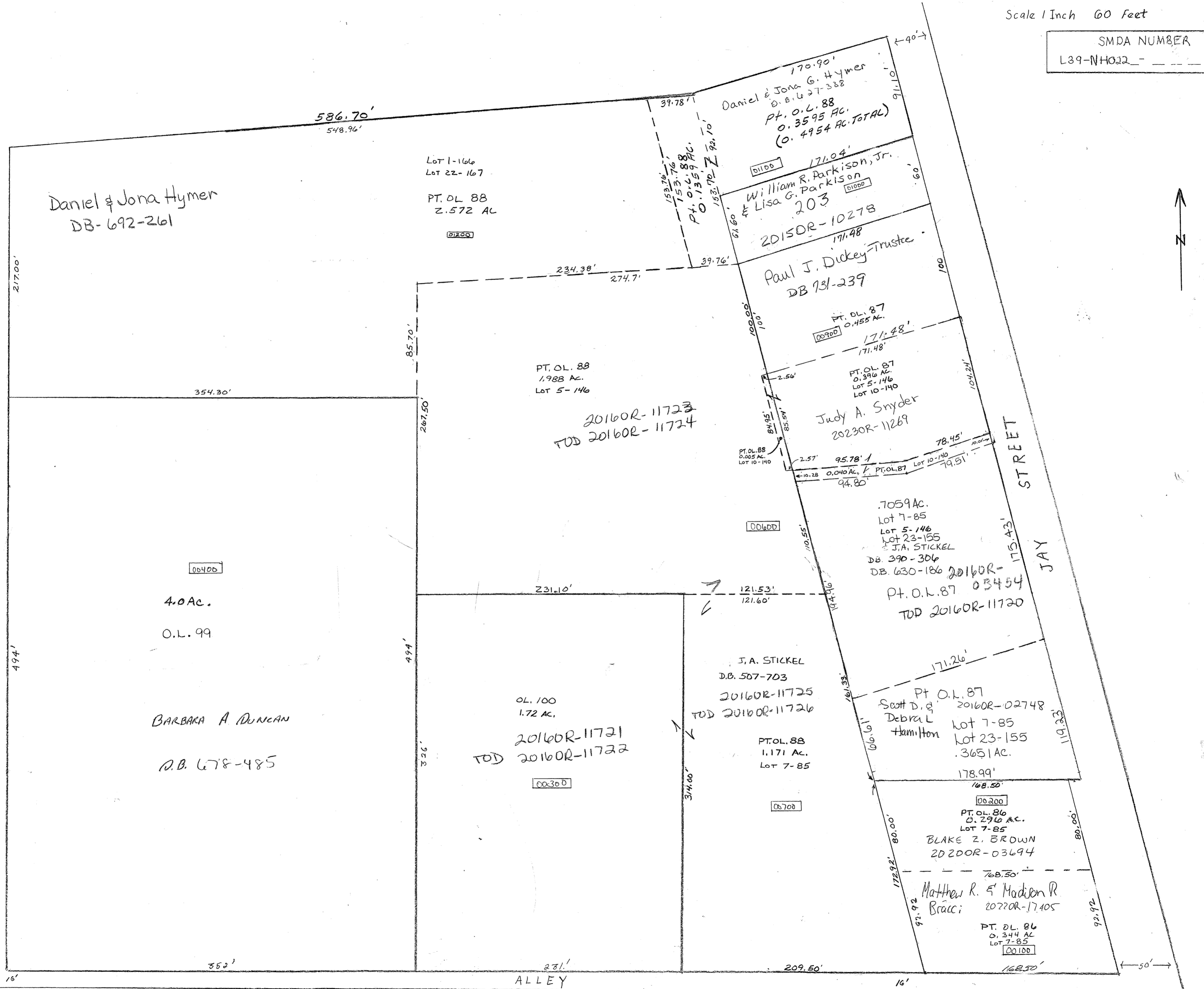


West Milton

Plat No N 22 N22

Scale 1 Inch 60 Feet

SMDA NUMBER
L39-NH022



Daniel & Jona Hymer
DB-692-261

Lot 1-166
Lot 22-167
PT. OL 88
2.572 AC
01200

170.90'
Daniel & Jona G. Hymer
D.B. 627-388
Pt. O.L. 88
0.3595 AC.
(0.4954 AC. TOTAL)
01100

171.04'
William R. Parkison, Jr.
& Lisa G. Parkison
203
2015OR-10278
01000

171.48'
Paul J. Dickey-Trustee
DB 731-239
00900

PT. OL. 87
0.1555 AC.
171.48'
171.48'

PT. OL. 87
0.396 AC.
Lot 5-146
Lot 10-140
Judy A. Snyder
2023OR-11269
00600

.7059 AC.
Lot 7-85
Lot 5-146
Lot 23-155
J.A. STICKEL
DB. 390-306
DB. 630-186
Pt. O.L. 87
0.3454
TOD 2016OR-11720
00600

J.A. STICKEL
D.B. 507-703
2016OR-11725
TOD 2016OR-11726
PT. OL. 88
1.171 AC.
Lot 7-85
00700

OL. 100
1.72 AC.
2016OR-11721
TOD 2016OR-11722
00300

BARBARA A. DUNCAN
D.B. 678-485
00400

PT. OL. 86
0.2946 AC.
Lot 7-85
BLAKE Z. BROWN
2022OR-03694
00200

Matthew R. & Madison R.
Bracci
2022OR-17405
PT. OL. 86
0.344 AC
Lot 7-85
00100