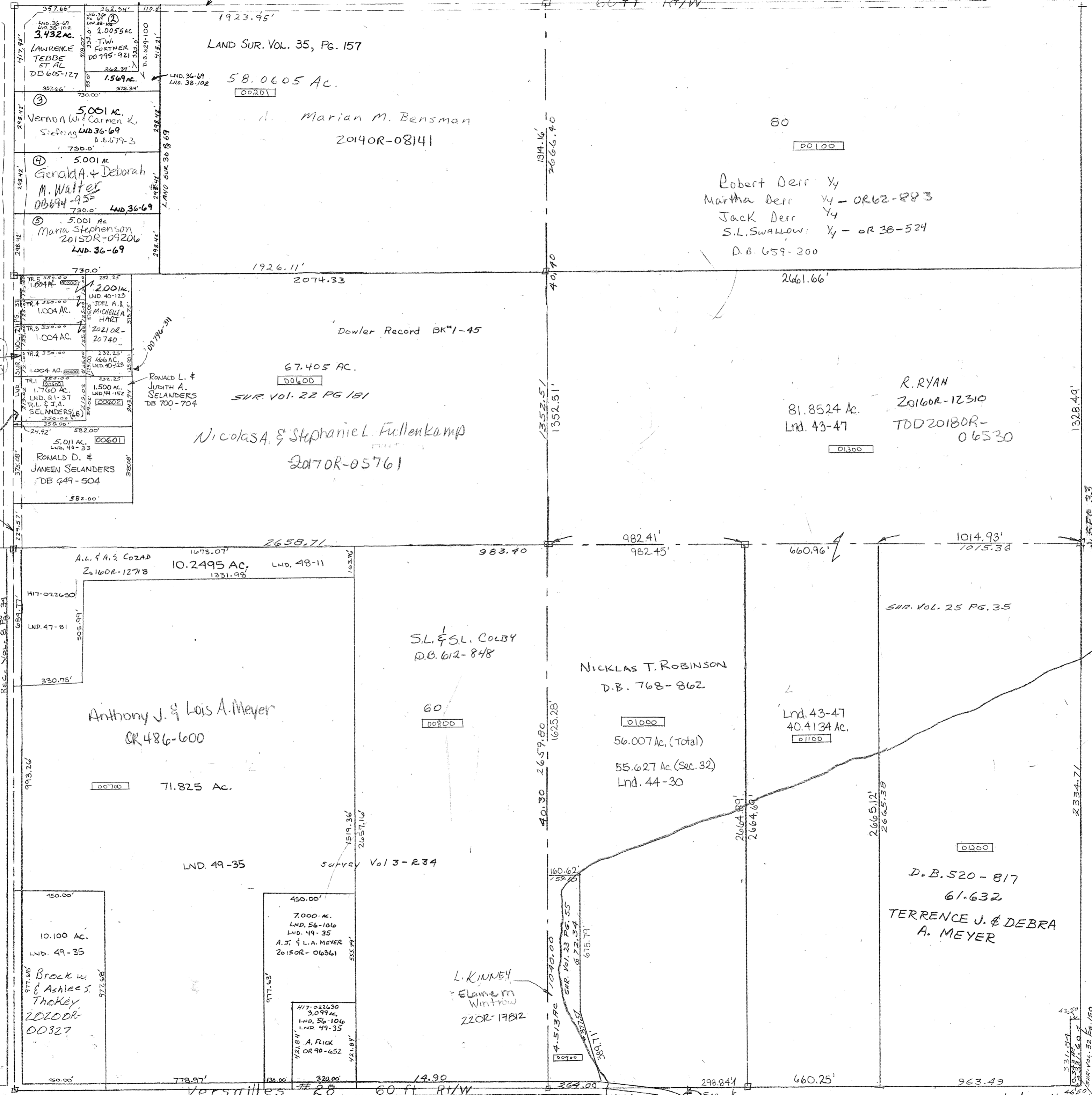


PARCEL NUMBER
H 17 -



HEATHER M. Ray 1/2 int.
2022OR-01198
SHERY DRAKE 1/2 int.
OR 162-808

(Rm)
Carolyn Molina
Ronald Selanders
OR 101-253

Surveys:
Vol. 3 page 234 - SW. Qr. W. 1/4 SE.
LND. SUR. VOL. 40 PG. 123 - NW Qtr. W. Cen. Pt.
LND. 43-47 S. Pt. NE Qtr. & Cen. Pt. SE Qtr.
Lnd. 44-30 W. Pt. SE Qtr.
LND 48-11 NW. Pt. SW
LND 49-35 W. Pt. SW

10.100 AC.
LND. 49-35
Brock W.
& Ashlee S.
Thokey
2020OR-
00327

7.000 AC.
LND. 56-106
LND. 49-35
A.J. & L.A. MEYER
2015OR-06361

3.099 AC.
LND. 56-106
LND. 49-35
A. FLICK
OR 90-652

L. KINNEY
Elaine M
Wintrow
22OR-17812

4.513 AC
SUR. VOL. 23 PG. 55
& 72.34
675.79

D.B. 520-817
61-632
TERRENCE J. & DEBRA
A. MEYER

CLOUSE FAMILY FARM LLC
DO 791-27