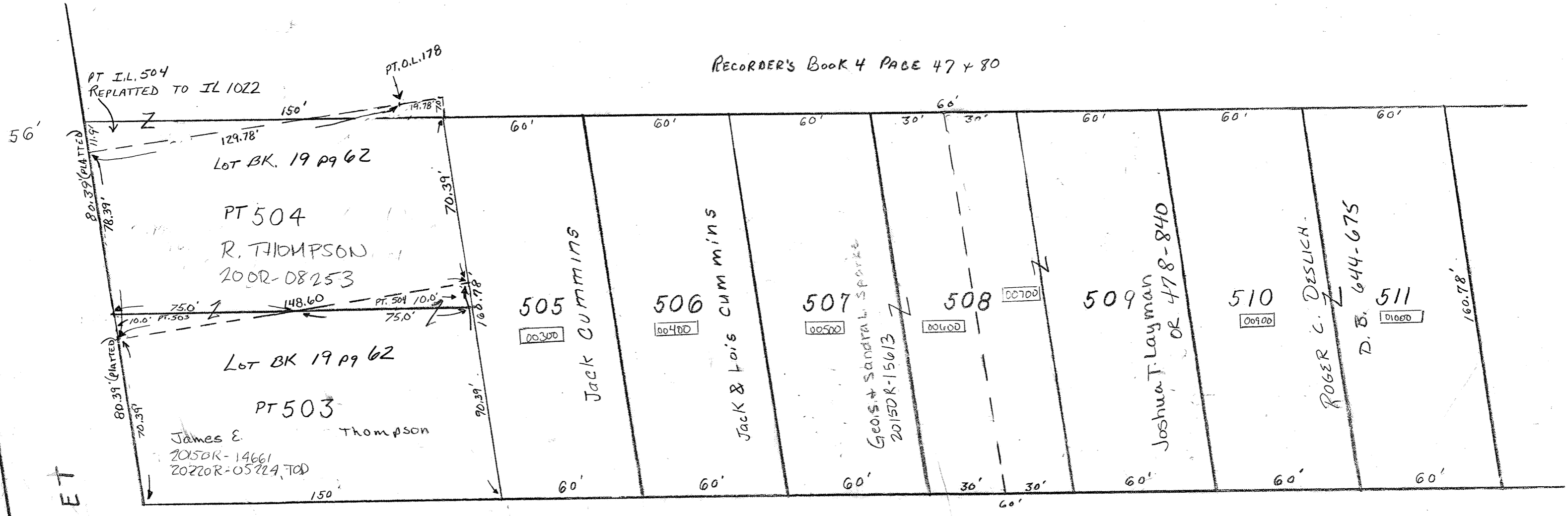


West Milton

Plat No. N 5 **N5**
Scale-1-Inch 40 Feet

SMDA NUMBER
L39-NH005- - - - -

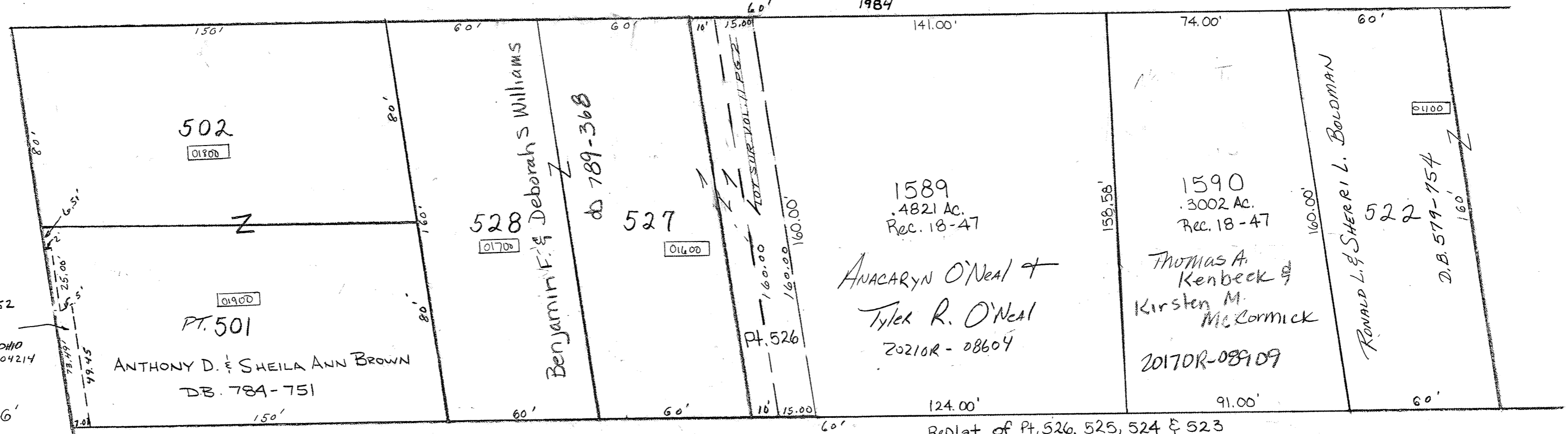
RECORDER'S BOOK 4 PAGE 47 & 80



STILLACRES DR.

NOTE: STILLWATER AVE. CHANGED TO STILLACRES DR. BY C.M. 707
60' 1984

MIAMI STREET



Replat of Pt. 526, 525, 524 & 523
Rec. 18-47



REVISED 01/04/2022

JAV