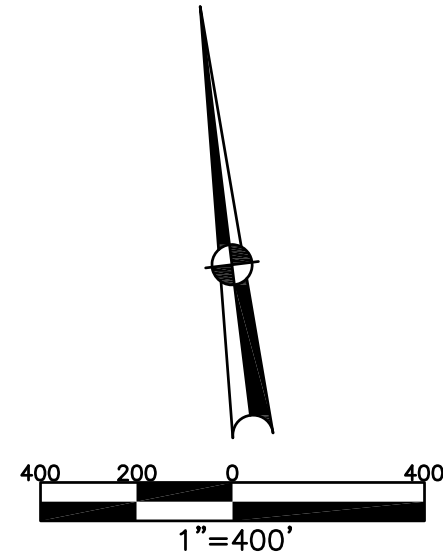


LOST CREEK TOWNSHIP
MIAMI COUNTY, OHIO

SECTION 9 TOWN 2 RANGE 11

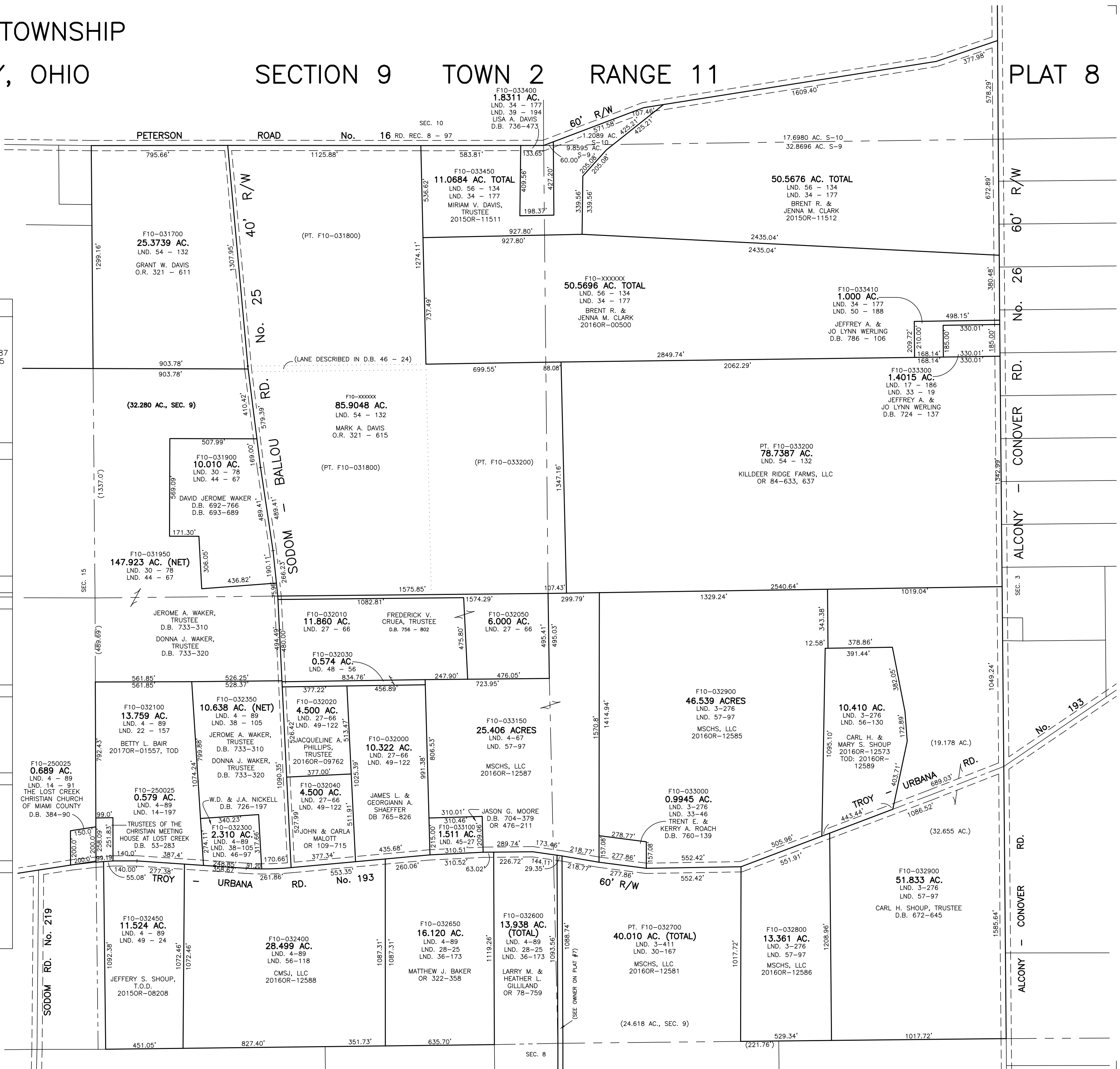
PLAT 8



ABBREVIATION LEGEND	
2014OR-07759	= RECORDER'S DOCUMENT NUMBER OR 406-509
D.B. 677-326	= OFFICIAL RECORD 406 PAGE 509
REC. 18-87	= DEED BOOK 677, PAGE 326
LND. 56-145	= RECORDER'S PLAT BOOK 18, PAGE 87
LOT 24-200	= LAND SURVEY VOLUME 56, PAGE 145
R.R. 8-18	= LOT SURVEY VOLUME 24, PAGE 200
R/W	= ROAD RECORD VOLUME 8, PAGE 18
C	= RIGHT OF WAY
AC.	= CENTERLINE
TWP.	= ACRES
TR.	= TOWNSHIP
②	= TRACT
	= LOT CREATED BY RECORDER'S PLAT

LINE LEGEND	
	Blow-up Boundary
	Property Line
	Lot Split Line
	Section Line
	Centerline
	Right-of-Way Line
	Corporation Line

SURVEY INDEX	
NORTHEAST QUARTER	
LND. 17-186	RD. REC. 8-97
LND. 39-194	
LND. 50-188	
LND. 54-132	
LND. 56-134	
SOUTHEAST QUARTER	
LND. 3-276	
LND. 3-411	
LND. 4-67	
LND. 5-191	
LND. 27-92	
LND. 28-25	
LND. 36-173	
LND. 56-130	
LND. 57-97	
SOUTHWEST QUARTER	
LND. 4-67	LND. 36-173
LND. 4-89	LND. 38-105
LND. 14-197	LND. 44-67
LND. 22-157	LND. 45-27
LND. 27-92	LND. 46-97
LND. 28-25	LND. 48-56
LND. 30-78	LND. 49-24
LND. 30-167	LND. 49-122
LND. 32-37	LND. 56-118
LND. 32-78	LND. 57-97
LND. 34-177	
LND. 39-194	
LND. 44-67	
LND. 54-132	
LND. 56-134	
NORTHWEST QUARTER	
LND. 30-78	RD. REC. 8-97
LND. 34-177	
LND. 39-194	
LND. 44-67	
LND. 54-132	
LND. 56-134	



PREPARED BY: MIAMI COUNTY ENGINEER'S MAP DEPARTMENT
PAUL P. HUELSKAMP, P.E., P.S., COUNTY ENGINEER
DATE: MAY 6, 2013
REVISED: MARCH 7, 2017 DV