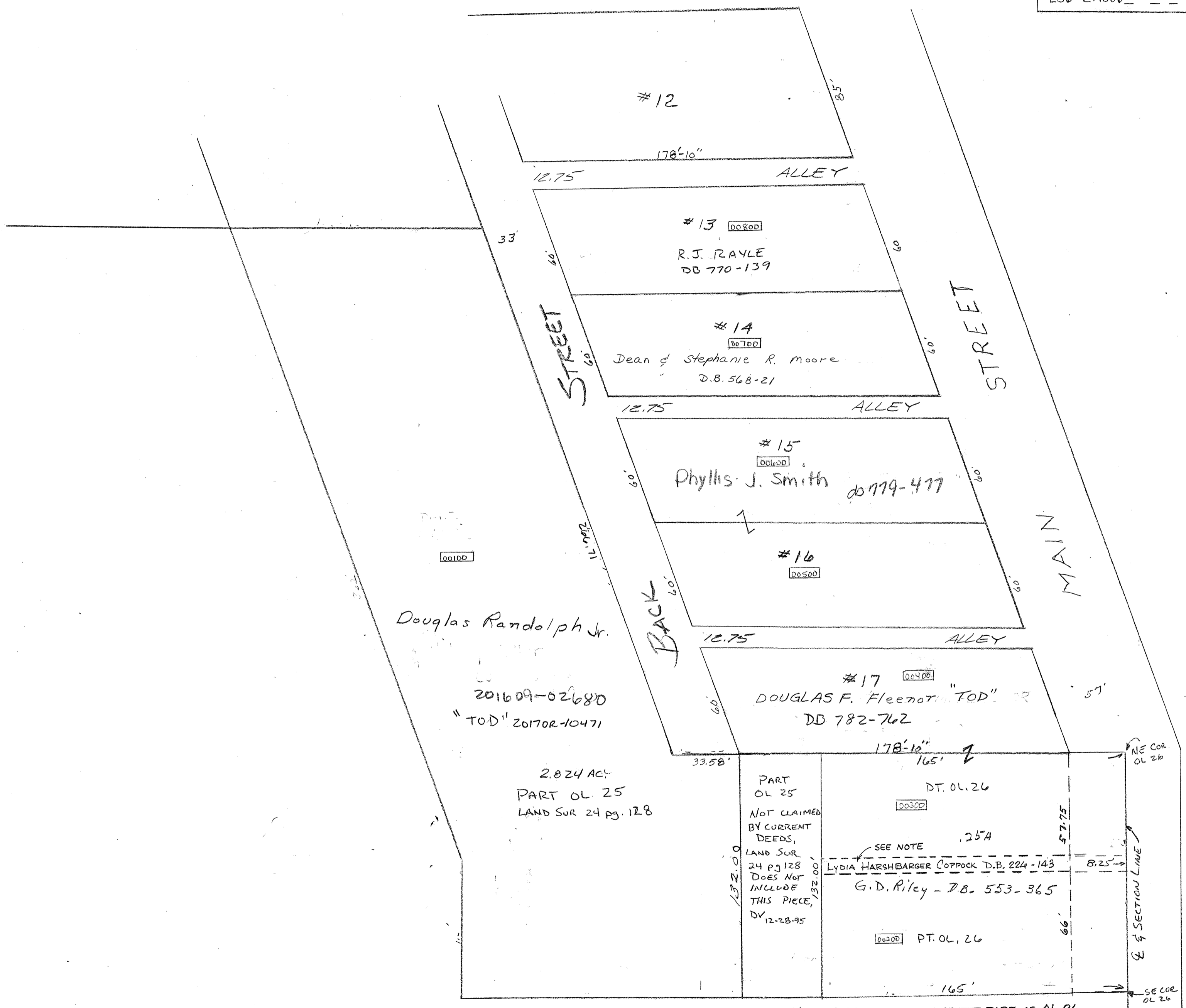


SMDA NUMBER
L36-LA006 - - - - -



FOR OL 26,
SEE REC. BK 2 PGS 131
AND 141 & D.B. 84 pg. 566

NOTE: 8.25 FT. STRIP IN CENTER PART OF OL 24
WAS HISTORICALLY INCLUDED WITH SOUTH
PART OF THE LOT, UP TO AND INCLUDING
D.B. 226-143. BY CERTIFICATE OF TRANSFER
IN D.B. 243-24, DATED NOV. 4, 1942, THE
DESCRIPTION WAS ERRONEOUSLY REVISED
TO "66 FEET OFF THE SOUTH PART OF
OUTLOT 24," LEAVING THE STRIP IN QUESTION.
ANDY SMITH, MAP DEPT. 10-22-2019