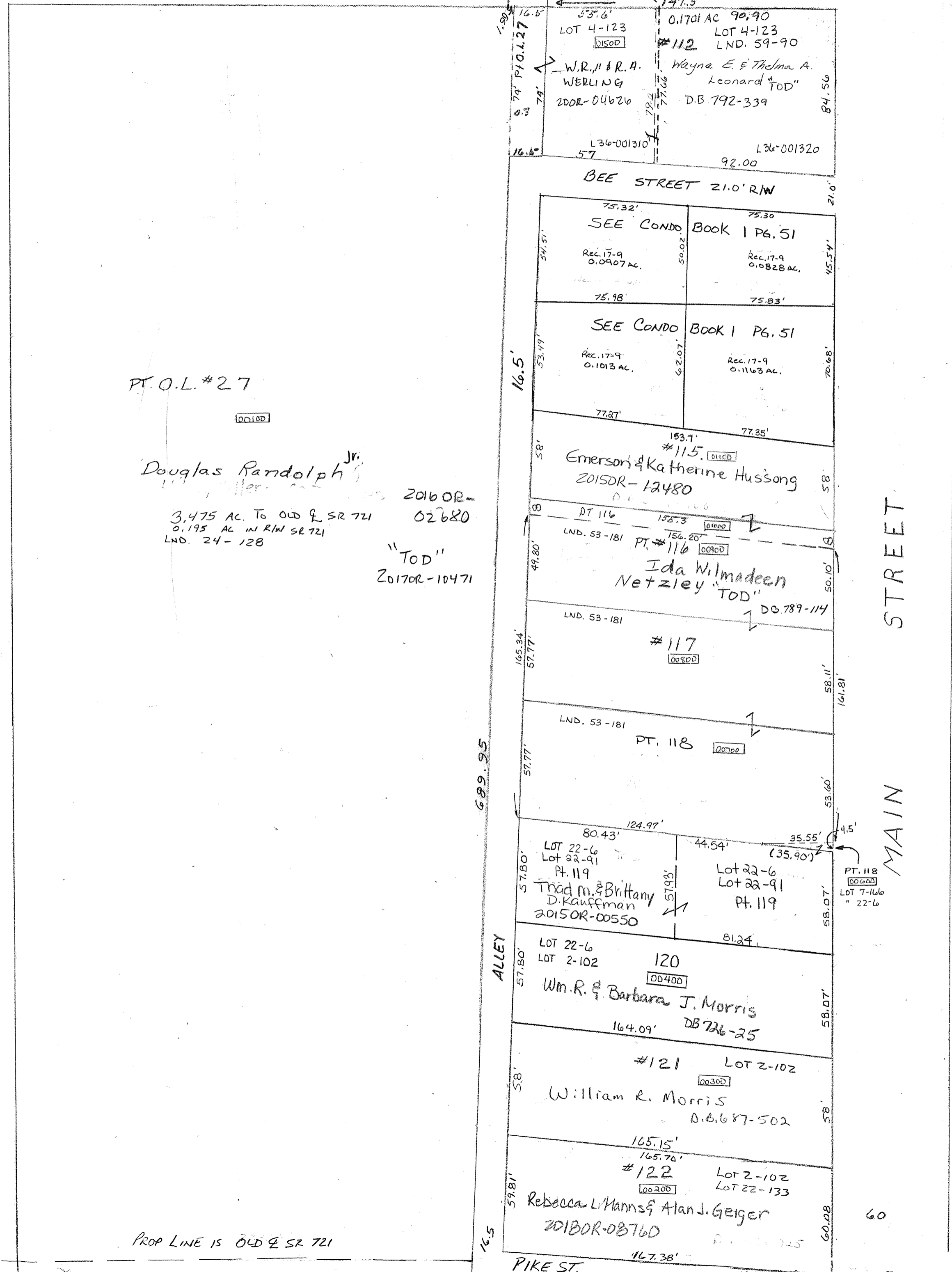


SMDA NUMBER
L36-LA013



Condo Book 1, 51 & 51A
Lots 178-181
Rec. 3 pg. 63
Rec. 16 pg. 58
Rec. 17 pg. 9



P.T.O.L. #27

Douglas Randolph Jr.
2016 OR-02680
3.475 AC. To OLD & SR 721
0.195 AC. IN R/W SR 721
LND. 24-128
"TOD"
2017 OR-10471

MAIN STREET

ALLEY

PIKE ST.

PROP LINE IS OLD & SR 721