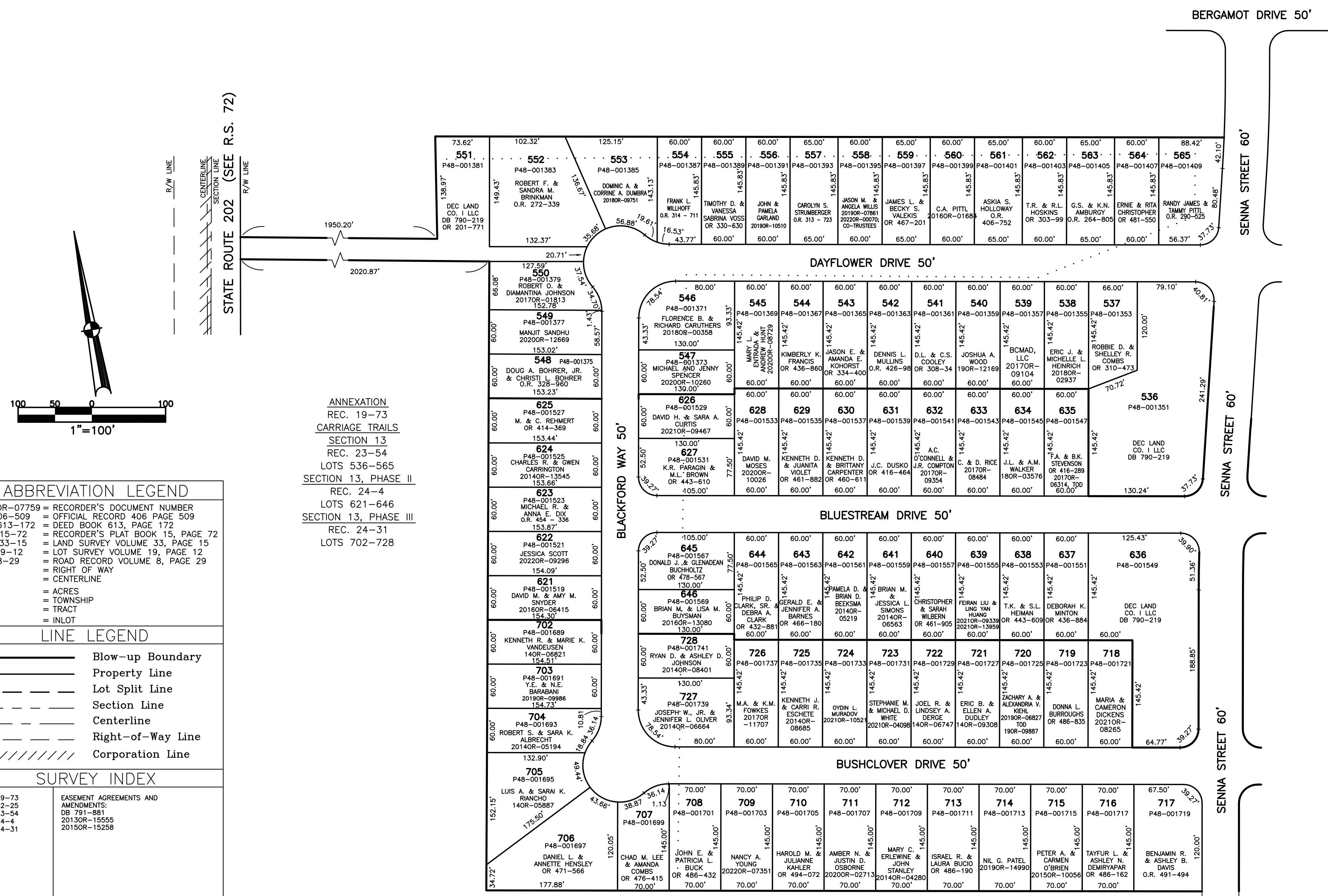


SECTION 19, 25
TOWN 2
RANGE 9

CITY OF HUBER HEIGHTS
MIAMI COUNTY, OHIO

PARCEL ID NUMBER
P48-_____

PLAT 15



ABBREVIATION LEGEND	
2014OR-07759	= RECORDER'S DOCUMENT NUMBER
OR 406-509	= OFFICIAL RECORD 406 PAGE 509
D.B. 613-172	= DEED BOOK 613, PAGE 172
REC. 15-72	= RECORDER'S PLAT BOOK 15, PAGE 72
LND. 33-15	= LAND SURVEY VOLUME 33, PAGE 15
LOT 19-12	= LOT SURVEY VOLUME 19, PAGE 12
R.R. 8-29	= ROAD RECORD VOLUME 8, PAGE 29
R/W	= RIGHT OF WAY
C	= CENTERLINE
AC.	= ACRES
TWP.	= TOWNSHIP
TR.	= TRACT
IL	= INLOT

LINE LEGEND	
	Blow-up Boundary
	Property Line
	Lot Split Line
	Section Line
	Centerline
	Right-of-Way Line
	Corporation Line

SURVEY INDEX	
REC. 19-73	EASEMENT AGREEMENTS AND AMENDMENTS:
REC. 22-25	DB 791-881
REC. 23-54	2013OR-15555
REC. 24-4	2015OR-15258
REC. 24-31	

ANNEXATION
REC. 19-73
CARRIAGE TRAILS
SECTION 13
REC. 23-54
LOTS 536-565
SECTION 13, PHASE II
REC. 24-4
LOTS 621-646
SECTION 13, PHASE III
REC. 24-31
LOTS 702-728

PREPARED BY: MIAMI COUNTY ENGINEER'S MAP DEPARTMENT
PAUL P. HUELSKAMP, P.E., P.S., COUNTY ENGINEER
DATE: DECEMBER 30, 2011 DS
REVISED: June 15, 2022 M5TORMS