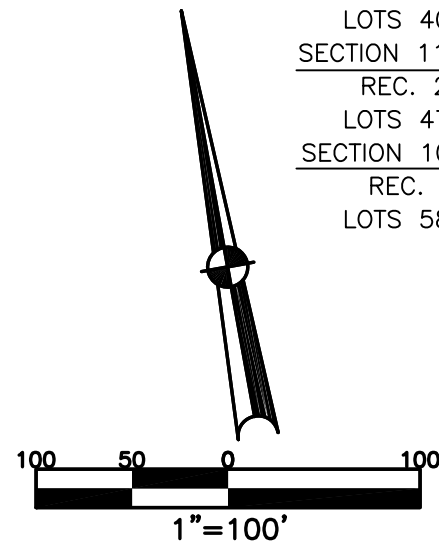


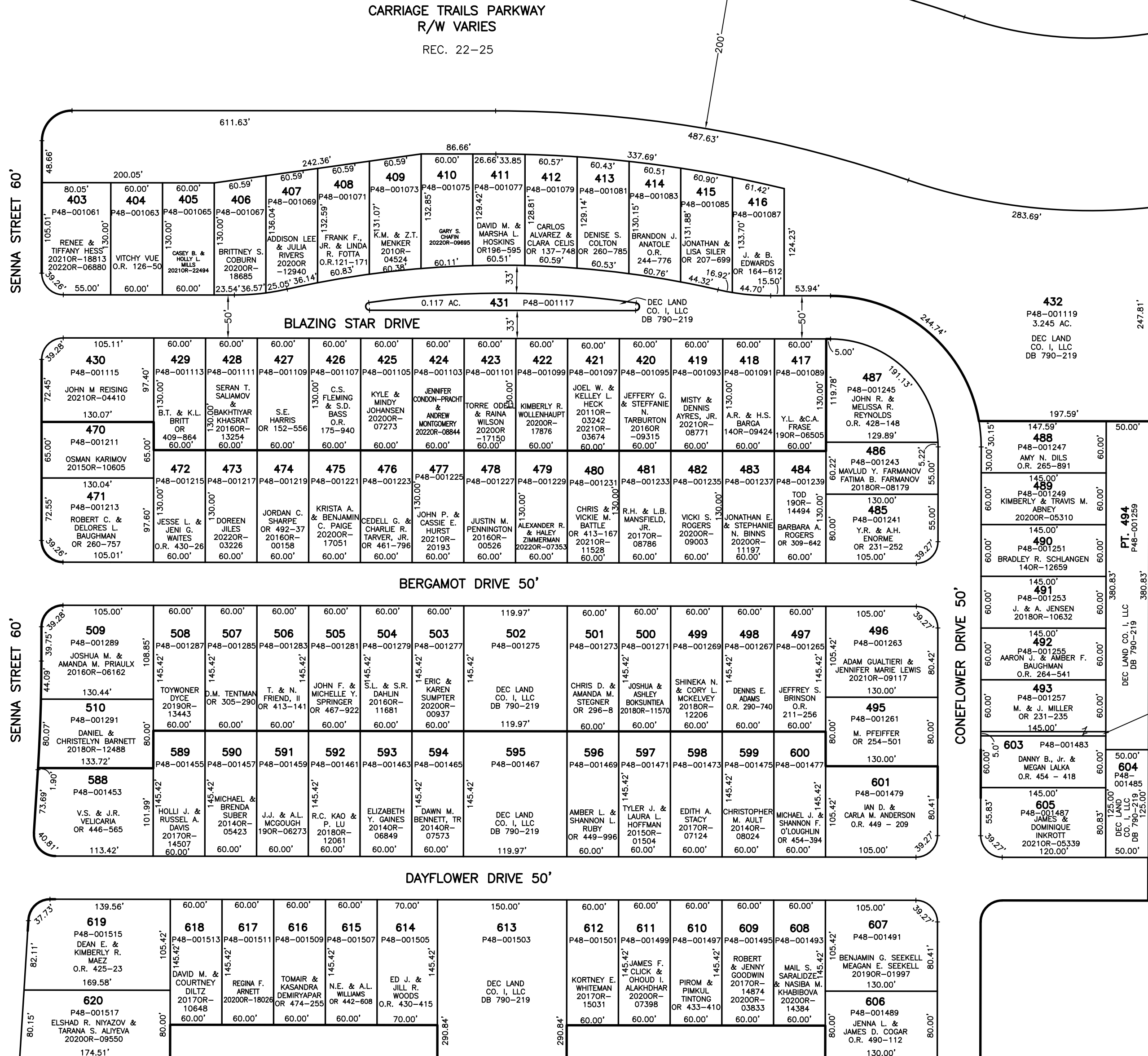
ANNEXATION
REC. 19-73
CARRIAGE TRAILS
SECTION 11
REC. 22-91
LOTS 403-432
SECTION 11, PHASE II
REC. 23-27
LOTS 470-510
SECTION 10, PHASE I
REC. 24-3
LOTS 588-620



ABBREVIATION LEGEND	
2014OR-07759	= RECORDER'S DOCUMENT NUMBER
OR 406-509	= OFFICIAL RECORD 406 PAGE 509
D.B. 677-326	= DEED BOOK 677, PAGE 326
REC. 18-87	= RECORDER'S PLAT BOOK 18, PAGE 87
LND. 56-145	= LAND SURVEY VOLUME 56, PAGE 145
LOT 24-200	= LOT SURVEY VOLUME 24, PAGE 200
R.R. 8-18	= ROAD RECORD VOLUME 8, PAGE 18
R/W	= RIGHT OF WAY
C	= CENTERLINE
AC.	= ACRES
TWP.	= TOWNSHIP
TR.	= TRACT
IL	= INLOT

LINE LEGEND	
	Blow-up Boundary
	Property Line
	Lot Split Line
	Section Line
	Centerline
	Right-of-Way Line
	Corporation Line

SURVEY INDEX	
REC. 19-73	EASEMENT AGREEMENTS AND AMENDMENTS:
REC. 22-25	DB 791-881
REC. 22-91	2013OR-15555
REC. 23-27	2015OR-15258
REC. 24-3	



PREPARED BY: MIAMI COUNTY ENGINEER'S MAP DEPARTMENT
PAUL P. HUELSKAMP, P.E., P.S., COUNTY ENGINEER
DATE: JULY 1, 2010 DS
REVISED: June 8, 2022 M5TORMS