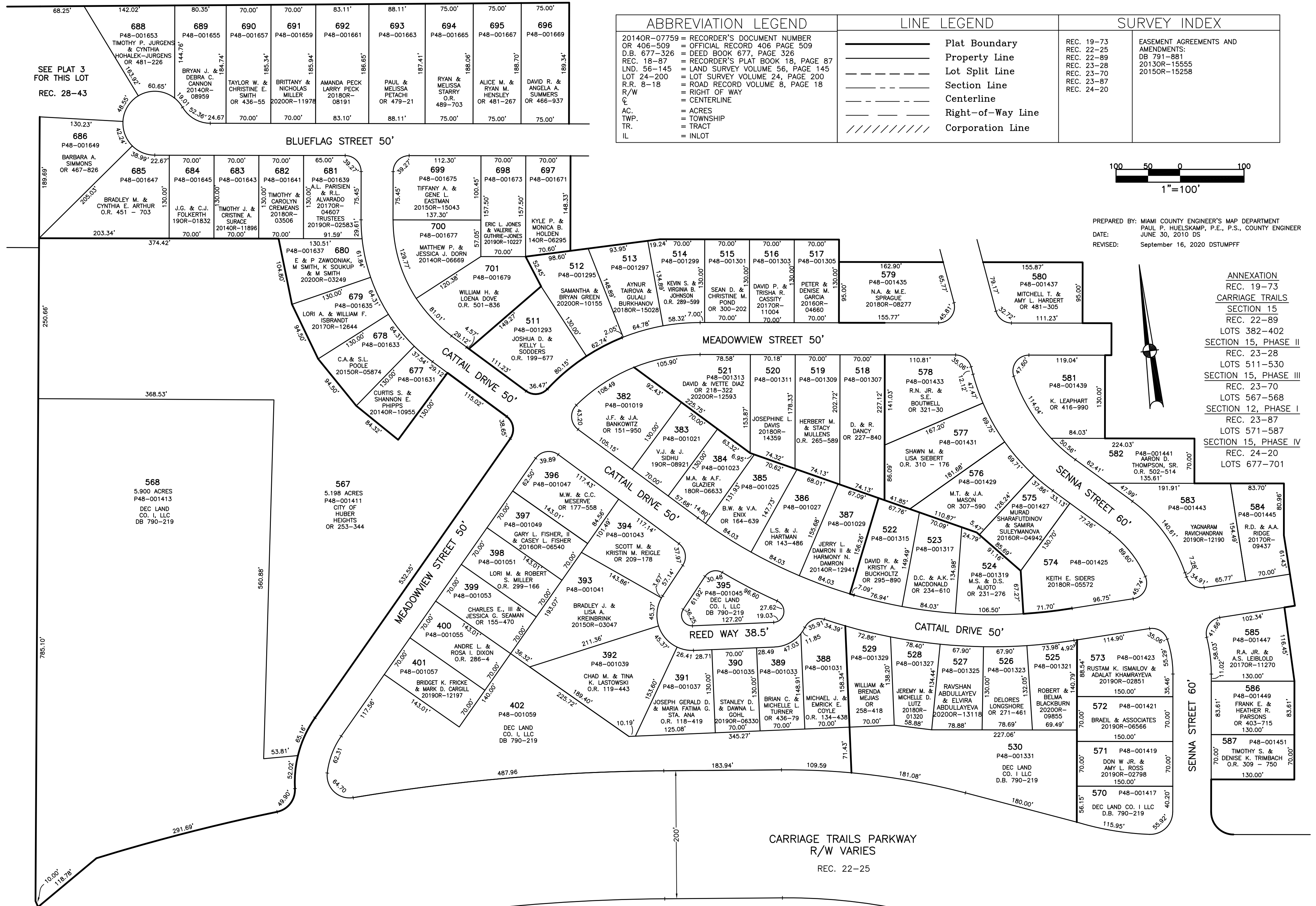


SECTION 25
TOWN 2
RANGE 9

CITY OF HUBER HEIGHTS MIAMI COUNTY, OHIO

PARCEL ID NUMBER
P48-_____

PLAT 13



ABBREVIATION LEGEND	LINE LEGEND	SURVEY INDEX
2014OR-07759 = RECORDER'S DOCUMENT NUMBER OR 406-509 = OFFICIAL RECORD 406 PAGE 509 D.B. 677-326 = DEED BOOK 677, PAGE 326 REC. 18-87 = RECORDER'S PLAT BOOK 18, PAGE 87 LND. 56-145 = LAND SURVEY VOLUME 56, PAGE 145 LOT 24-200 = LOT SURVEY VOLUME 24, PAGE 200 R.R. 8-18 = ROAD RECORD VOLUME 8, PAGE 18 R/W = RIGHT OF WAY C = CENTERLINE AC. = ACRES TWP. = TOWNSHIP TR. = TRACT IL = INLOT	Plat Boundary Property Line Lot Split Line Section Line Centerline Right-of-Way Line Corporation Line	REC. 19-73 REC. 22-25 REC. 22-89 REC. 23-28 REC. 23-70 REC. 23-87 REC. 24-20 EASEMENT AGREEMENTS AND AMENDMENTS: DB 791-881 2013OR-15555 2015OR-15258

PREPARED BY: MIAMI COUNTY ENGINEER'S MAP DEPARTMENT
PAUL P. HUELSKAMP, P.E., P.S., COUNTY ENGINEER
DATE: JUNE 30, 2010 DS
REVISED: September 16, 2020 DSTUMPF

ANNEXATION
REC. 19-73
CARRIAGE TRAILS
SECTION 15
REC. 22-89
LOTS 382-402
SECTION 15, PHASE II
REC. 23-28
LOTS 511-530
SECTION 15, PHASE III
REC. 23-70
LOTS 567-568
SECTION 12, PHASE I
REC. 23-87
LOTS 571-587
SECTION 15, PHASE IV
REC. 24-20
LOTS 677-701