

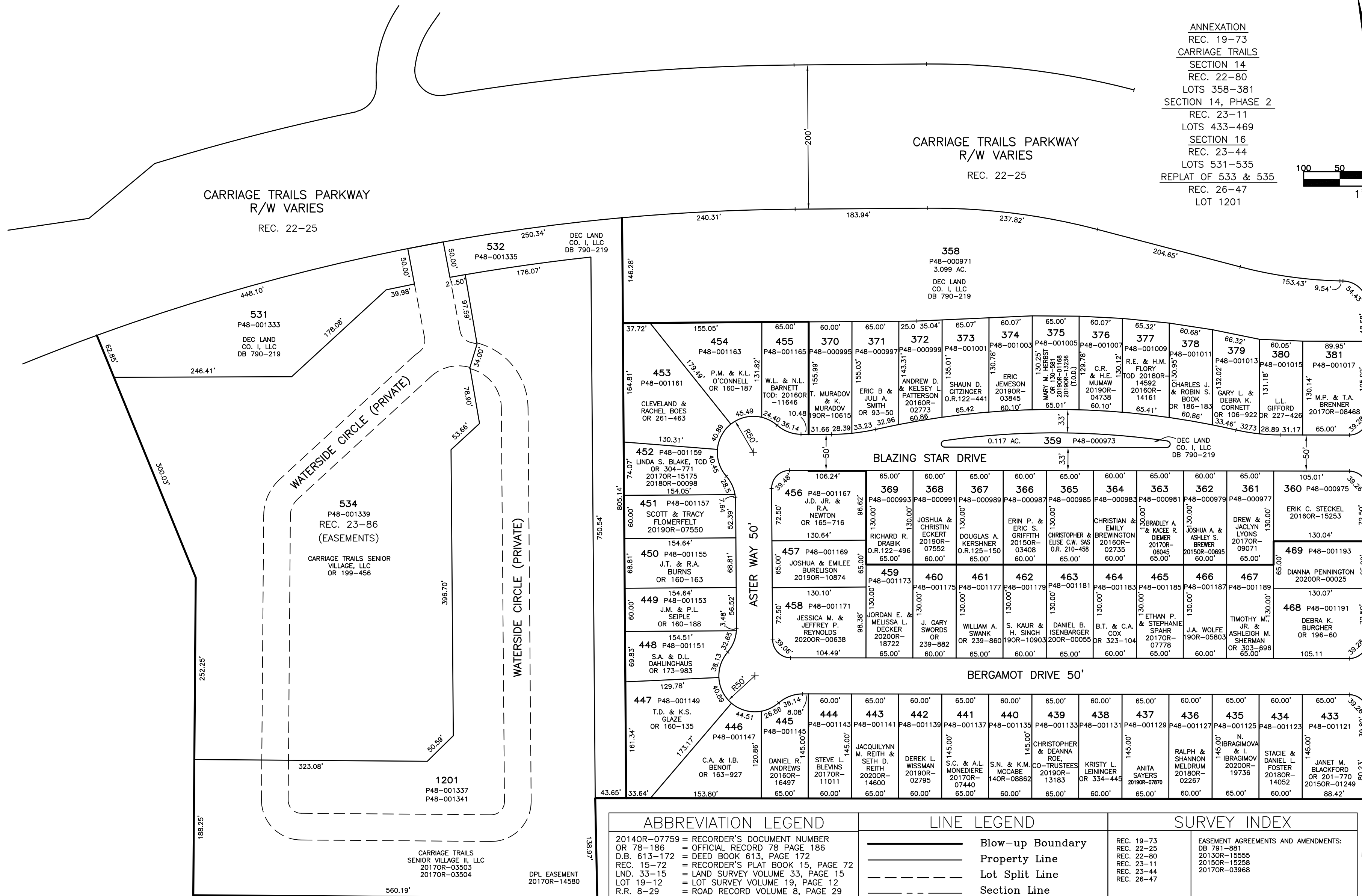
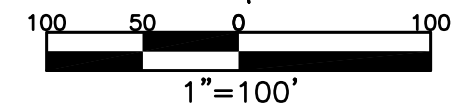
SECTION 25, 19
TOWN 2
RANGE 9

CITY OF HUBER HEIGHTS
MIAMI COUNTY, OHIO

PARCEL ID NUMBER
P48-_____

PLAT 12

ANNEXATION
REC. 19-73
CARRIAGE TRAILS
SECTION 14
REC. 22-80
LOTS 358-381
SECTION 14, PHASE 2
REC. 23-11
LOTS 433-469
SECTION 16
REC. 23-44
LOTS 531-535
REPLAT OF 533 & 535
REC. 26-47
LOT 1201



ABBREVIATION LEGEND	LINE LEGEND	SURVEY INDEX
2014OR-07759 = RECORDER'S DOCUMENT NUMBER	— Blow-up Boundary	REC. 19-73
OR 78-186 = OFFICIAL RECORD 78 PAGE 186	— Property Line	REC. 22-25
D.B. 613-172 = DEED BOOK 613, PAGE 172	- - - Lot Split Line	REC. 22-80
REC. 15-72 = RECORDER'S PLAT BOOK 15, PAGE 72	- - - Section Line	REC. 23-11
LND. 33-15 = LAND SURVEY VOLUME 33, PAGE 15	- - - Centerline	REC. 23-44
LOT 19-12 = LOT SURVEY VOLUME 19, PAGE 12	- - - Right-of-Way Line	REC. 26-47
R.R. 8-29 = ROAD RECORD VOLUME 8, PAGE 29	==== Corporation Line	
R/W = RIGHT OF WAY		EASEMENT AGREEMENTS AND AMENDMENTS: DB 791-881 2013OR-15555 2015OR-15258 2017OR-03968
C = CENTERLINE		
AC. = ACRES		
TWP. = TOWNSHIP		
TR. = TRACT		
IL = INLOT		

PREPARED BY: MIAMI COUNTY ENGINEER'S MAP DEPARTMENT
PAUL P. HUELSKAMP, P.E., P.S., COUNTY ENGINEER
DATE: JUNE 28, 2010 DS
REVISED: January 4, 2021 IGRFFIN