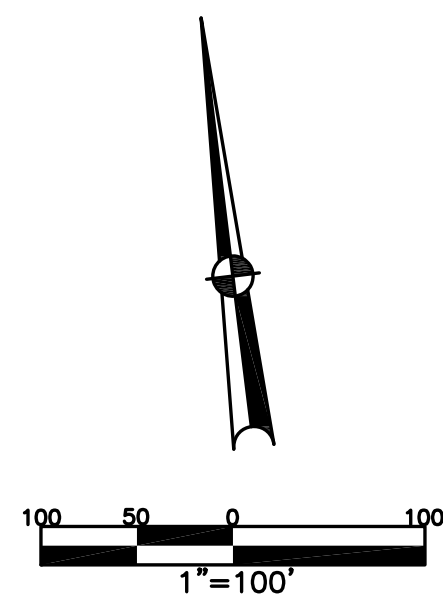


SECTION 19  
TOWN 2  
RANGE 9

CITY OF HUBER HEIGHTS  
MIAMI COUNTY, OHIO

PARCEL ID NUMBER  
P48-\_\_\_\_\_

PLAT 11



ANNEXATION REC. 20-101

WINDBROOKE SECTION ONE  
LOTS 315-349  
REC. 21-41,41A

REPLAT PART 303  
LOTS 1609-1611  
REC. 28-45

U.S. ROUTE 40 ~ 80' R/W  
908.03'

OR 420-436  
20180R-01010  
(EASEMENTS)

PT. INLOT 303  
0.941 ACRE  
LAND SURVEY 59-10  
CITY OF HUBER  
HEIGHTS, OHIO  
OR 202-361

INLOT 1609  
REC. 28-45  
8.755 ACRES

CARRIAGE  
TRAILS STORAGE  
LLC  
20220R-11236

LAND SURVEY 59-19  
LAND SURVEY 32-63  
ANNEXED REC. 20-101

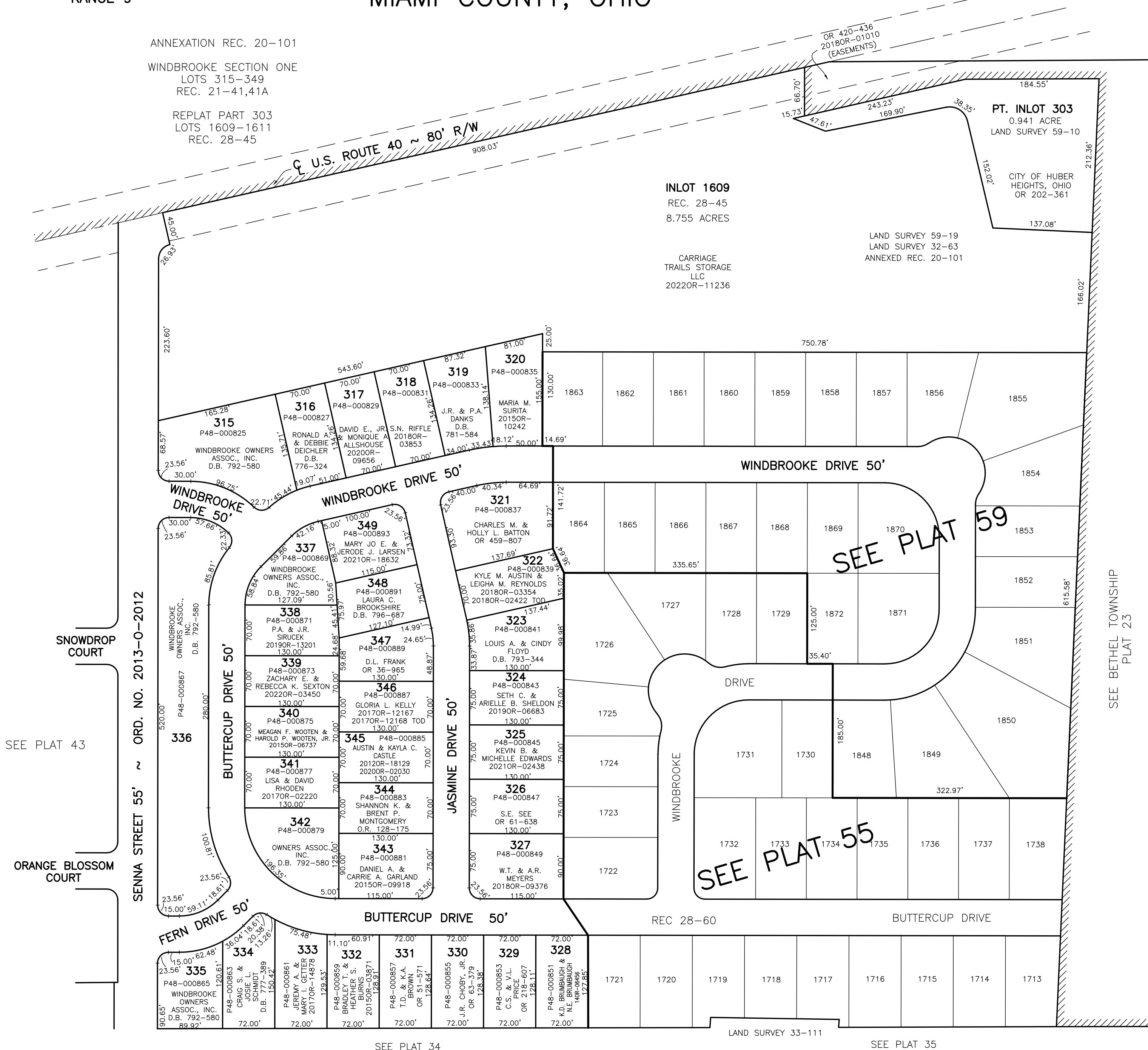
ABBREVIATION LEGEND	
2014OR-07759	= RECORDER'S DOCUMENT NUMBER
OR 406-509	= OFFICIAL RECORD 406 PAGE 509
D.B. 677-326	= DEED BOOK 677, PAGE 326
REC. 18-87	= RECORDER'S PLAT BOOK 18, PAGE 87
LND. 56-145	= LAND SURVEY VOLUME 56, PAGE 145
LOT 24-200	= LOT SURVEY VOLUME 24, PAGE 200
R.R. 8-18	= ROAD RECORD VOLUME 8, PAGE 18
R/W	= RIGHT OF WAY
CL	= CENTERLINE
AC.	= ACRES
TWP.	= TOWNSHIP
TR.	= TRACT
IL	= INLOT

LINE LEGEND	
	Blow-up Boundary
	Property Line
	Lot Split Line
	Section Line
	Centerline
	Right-of-Way Line
	Corporation Line

SURVEY INDEX	
REC. 20-101	LND. 32-63
REC. 21-41	LND. 33-111
REC. 28-45	LND. 59-10
REC. 29-21	LND. 59-19



PREPARED BY: MIAMI COUNTY ENGINEER'S MAP DEPARTMENT  
PAUL P. HUELSKAMP, P.E., P.S., COUNTY ENGINEER  
DATE: SEPTEMBER 23, 2005  
REVISED: March 4, 2022 APALMER

SEE PLAT 34

SEE PLAT 35

SEE BETHEL TOWNSHIP  
PLAT 23