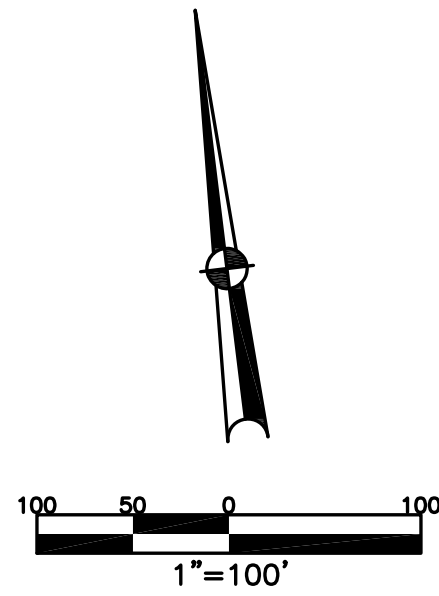


SECTION 19
TOWN 2
RANGE 9

CITY OF HUBER HEIGHTS
MIAMI COUNTY, OHIO

PARCEL ID NUMBER
P48-

PLAT 10



ABBREVIATION LEGEND		
2014OR-07759	=	RECORDER'S DOCUMENT NUMBER
OR 406-509	=	OFFICIAL RECORD 406 PAGE 509
D.B. 677-326	=	DEED BOOK 677, PAGE 326
REC. 18-87	=	RECORDER'S PLAT BOOK 18, PAGE 87
LND. 56-145	=	LAND SURVEY VOLUME 56, PAGE 145
LOT 24-200	=	LOT SURVEY VOLUME 24, PAGE 200
R.R. 8-18	=	ROAD RECORD VOLUME 8, PAGE 18
R/W	=	RIGHT OF WAY
C	=	CENTERLINE
AC.	=	ACRES
TWP.	=	TOWNSHIP
TR.	=	TRACT
IL	=	INLOT

LINE LEGEND	
	Blow-up Boundary
	Property Line
	Lot Split Line
	Section Line
	Centerline
	Right-of-Way Line
	Corporation Line

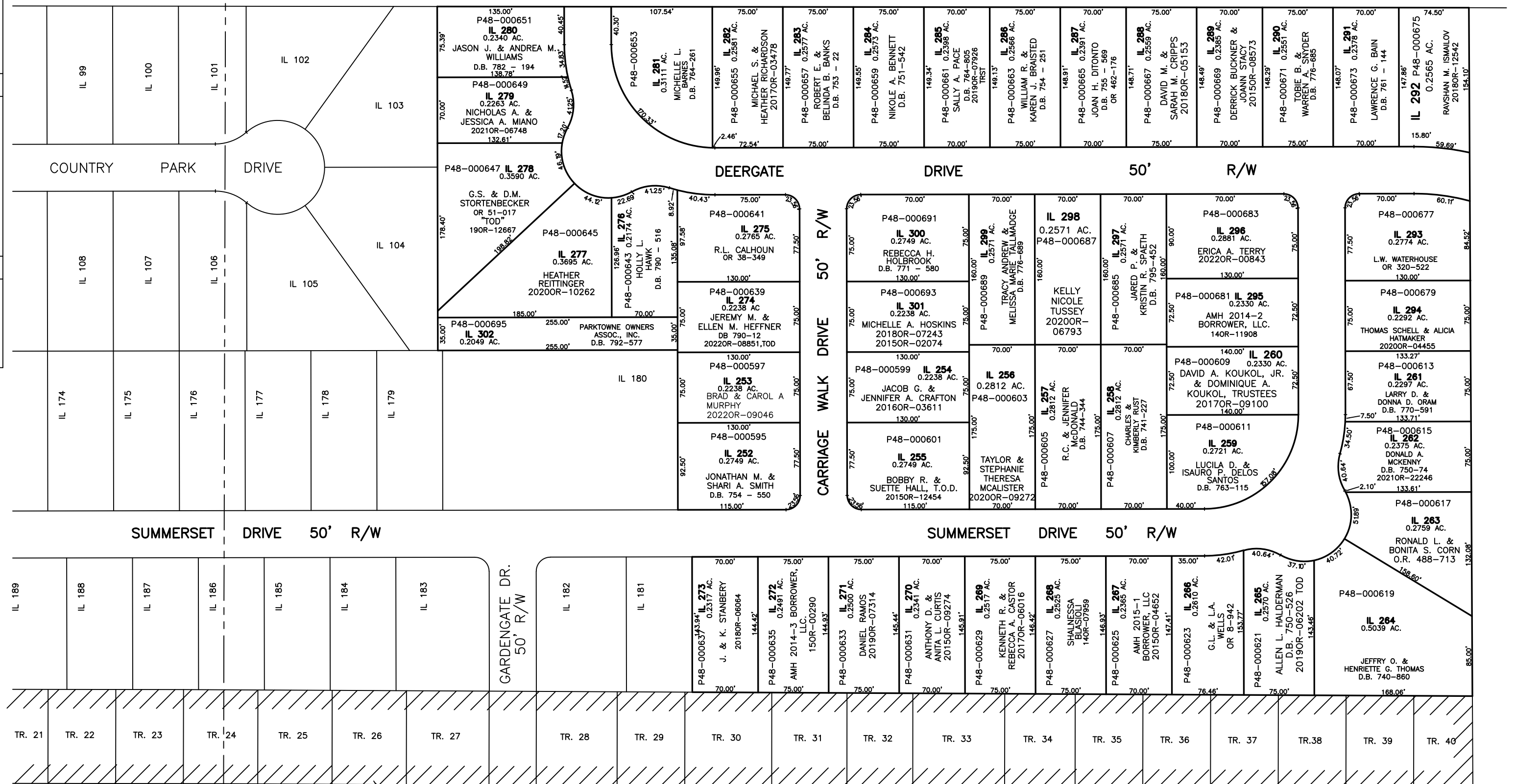
SURVEY INDEX		
LND. 35-28	LOT 23-10	REC. 18-56
LND. 35-86	LOT 23-83	REC. 20-13
		REC. 20-72

SECTION 25
SECTION 19

ANNEXATION
REC. 18-56

PARKTOWNE SUBDIVISION
SECTION EIGHT
LOTS 252 THRU 273
REC. 20 - 13

PARKTOWNE SUBDIVISION
SECTION NINE
LOTS 274 THRU 302
REC. 20 - 72



(MONTGOMERY COUNTY)

NOTE: THIS IS AN ISLAND OF BETHEL TOWNSHIP WITHIN HUBER HEIGHTS CORP.;
SEE BETHEL TOWNSHIP TAX MAPS FOR OWNERSHIP OF THESE PARCELS.