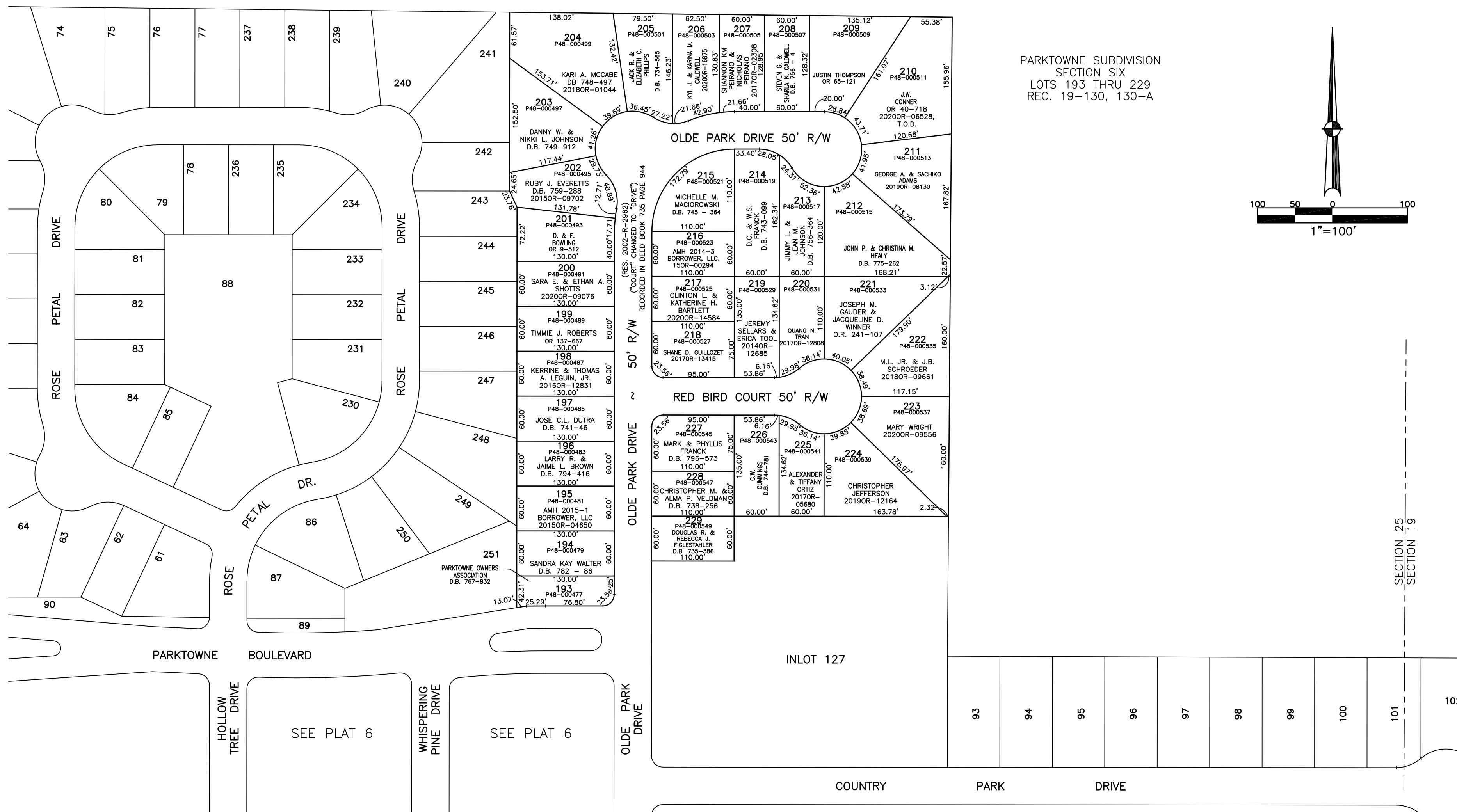


SECTION 25
TOWN 2
RANGE 9

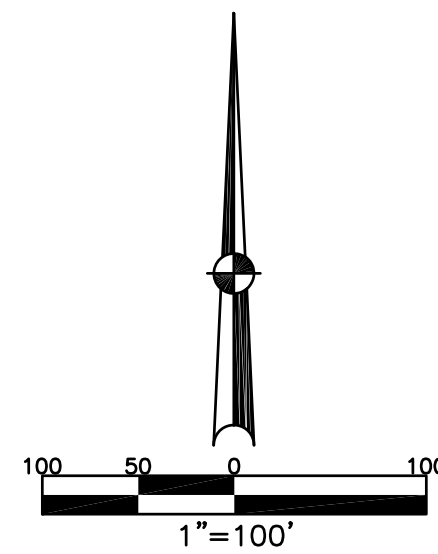
CITY OF HUBER HEIGHTS
MIAMI COUNTY, OHIO

PARCEL ID NUMBER
P48-_____

PLAT 9



PARKTOWNE SUBDIVISION
SECTION SIX
LOTS 193 THRU 229
REC. 19-130, 130-A



ABBREVIATION LEGEND	LINE LEGEND	SURVEY INDEX
2014OR-07759 = RECORDER'S DOCUMENT NUMBER	Blow-up Boundary	LOT 23 - 10
OR 72-698 = OFFICIAL RECORD 72 PAGE 698	Property Line	LOT 23 - 83
D.B. 613-172 = DEED BOOK 613, PAGE 172	Lot Split Line	REC. 18 - 56
REC. 15-72 = RECORDER'S PLAT BOOK 15, PAGE 72	Section Line	REC. 19-130, 130-A
LND. 33-15 = LAND SURVEY VOLUME 33, PAGE 15	Centerline	R.S. 72
LOT 19-12 = LOT SURVEY VOLUME 19, PAGE 12	Right-of-Way Line	
R.R. 8-29 = ROAD RECORD VOLUME 8, PAGE 29	Corporation Line	
R/W = RIGHT OF WAY		
CL = CENTERLINE		
AC. = ACRES		
TWP. = TOWNSHIP		
TR. = TRACT		
IL = INLOT		

PREPARED BY: MIAMI COUNTY ENGINEER'S MAP DEPARTMENT
PAUL P. HUELSKAMP P.E., P.S., COUNTY ENGINEER
DATE: MARCH 23, 2000
REVISED: November 13, 2020 CSHOUP

SECTION 25
SECTION 19