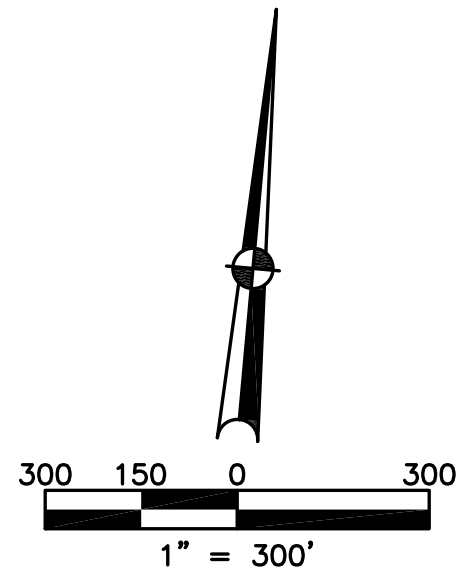


LENA (UNINCORPORATED VILLAGE)
MIAMI COUNTY, OHIO

BROWN TOWNSHIP
SECTION 6 TOWN 2 RANGE 11

PARCEL NUMBER
B04-_____

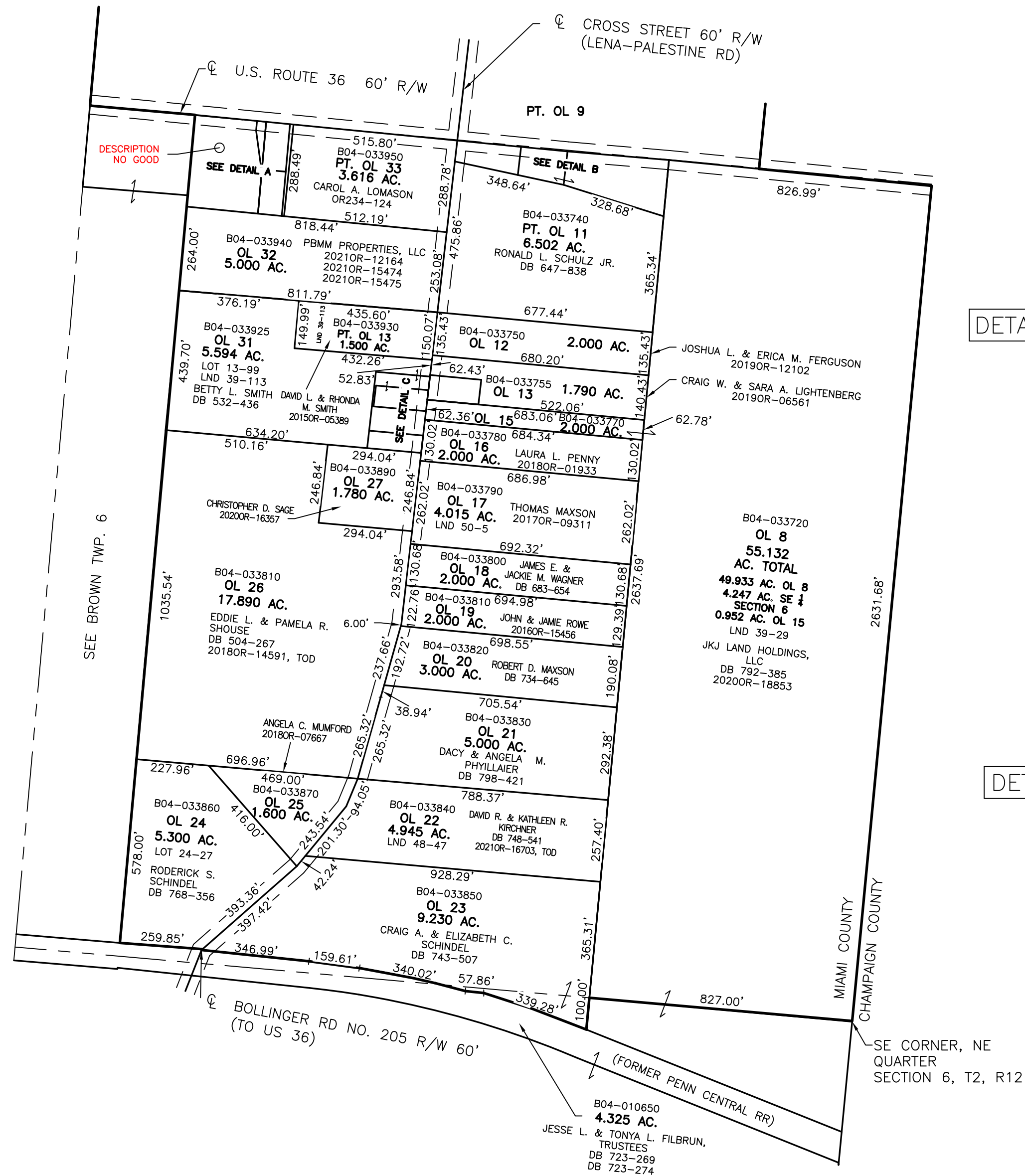
PLAT 1



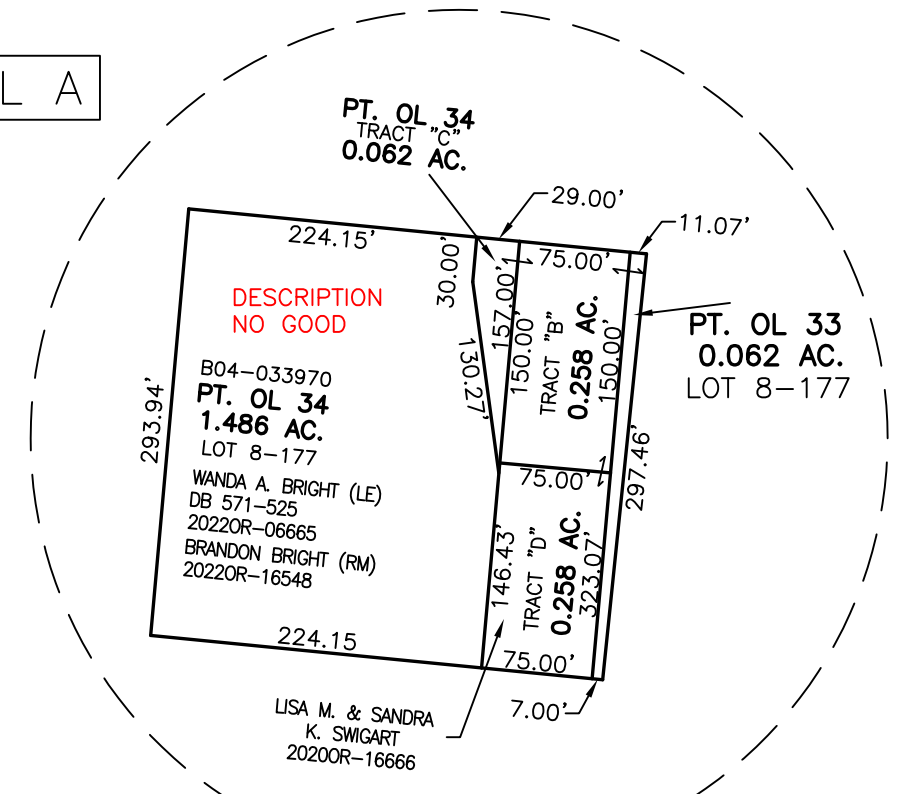
ABBREVIATION LEGEND		
2014OR-00759	=	RECORDER'S DOCUMENT NUMBER
OR 406-509	=	OFFICIAL RECORD 406 PAGE 509
D.B. 613-172	=	DEED BOOK 613, PAGE 172
REC. 15-72	=	RECORDER'S PLAT BOOK 15, PAGE 72
LND. 33-15	=	LAND SURVEY VOLUME 33, PAGE 15
LOT 19-12	=	LOT SURVEY VOLUME 19, PAGE 12
R.R. 8-29	=	ROAD RECORD VOLUME 8, PAGE 29
R/W	=	RIGHT OF WAY
CL	=	CENTERLINE
AC.	=	ACRES
TWP.	=	TOWNSHIP
TR.	=	TRACT
IL	=	INLOT

LINE LEGEND	
	Blow-up Boundary
	Property Line
	Lot Split Line
	Section Line
	Centerline
	Right-of-Way Line
	Corporation Line

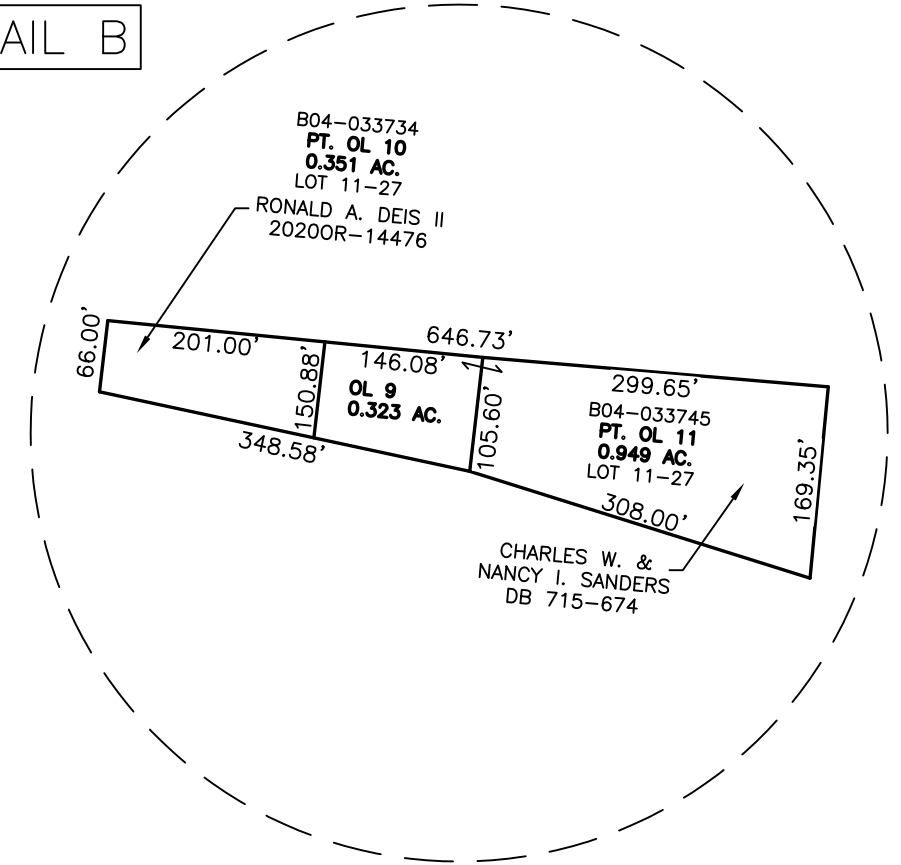
SURVEY INDEX		
LND	LOT	REC
LND 39-29	LOT 3-172	REC 4-58
LND 39-113	LOT 8-177	
LND 48-47	LOT 11-27	
LND 50-5	LOT 13-99	
	LOT 24-27	



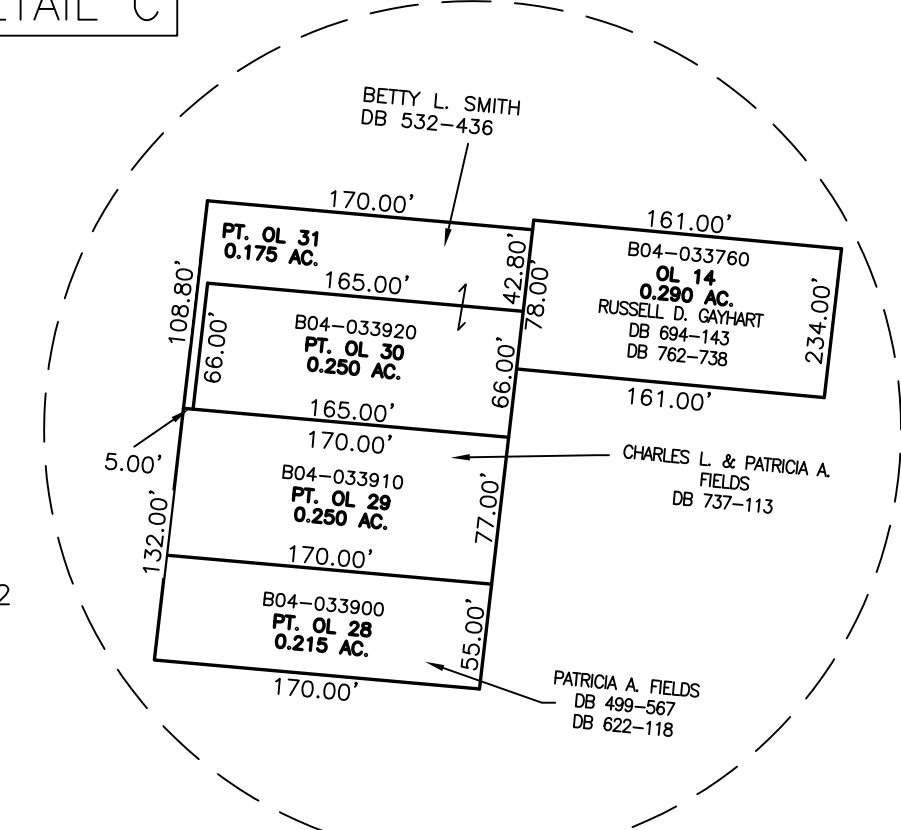
DETAIL A



DETAIL B



DETAIL C



PREPARED BY: MIAMI COUNTY ENGINEER'S MAP DEPARTMENT
PAUL P. HUELSKAMP, P.E., P.S., COUNTY ENGINEER
DATE: March 31, 2022 JOSHUA VINCENT
REVISED: Nov. 21, 2022 JVINCENT