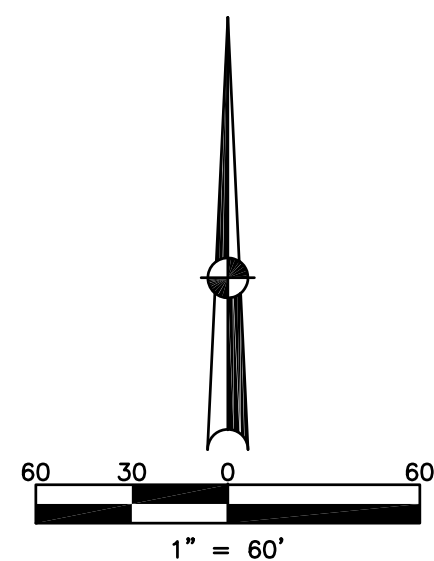


LENA (UNINCORPORATED VILLAGE)  
MIAMI COUNTY, OHIO

BROWN TOWNSHIP  
SECTION 1 TOWN 2 RANGE 12

PARCEL ID NUMBER  
B04-\_\_\_\_\_

PLAT 3



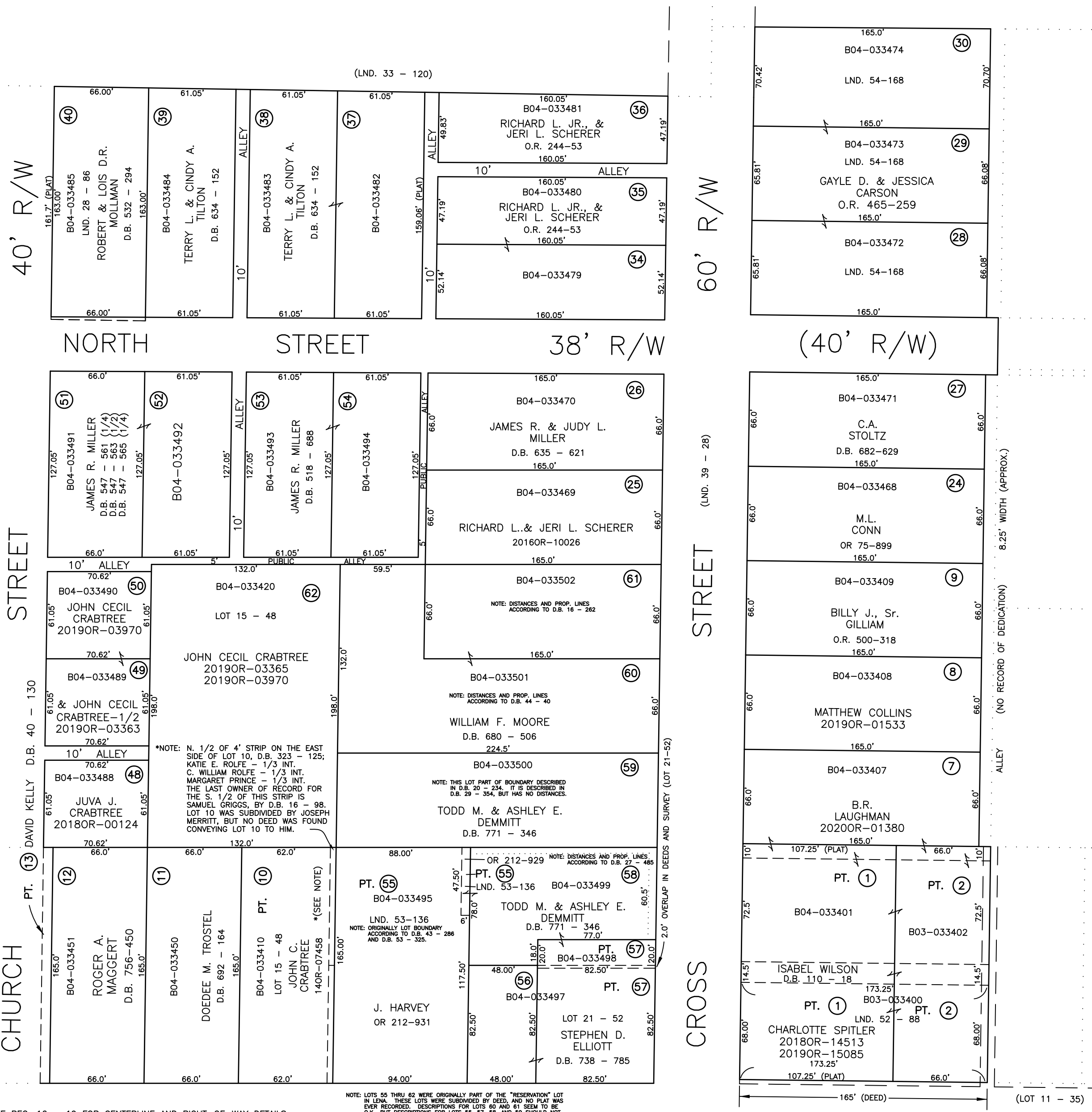
ABBREVIATION LEGEND		
2014OR-07759	=	RECORDER'S DOCUMENT NUMBER
OR 406-509	=	OFFICIAL RECORD 406 PAGE 509
D.B. 613-172	=	DEED BOOK 613, PAGE 172
REC. 15-72	=	RECORDER'S PLAT BOOK 15, PAGE 72
LND. 33-15	=	LAND SURVEY VOLUME 33, PAGE 15
LOT 19-12	=	LOT SURVEY VOLUME 19, PAGE 12
R.R. 8-29	=	ROAD RECORD VOLUME 8, PAGE 29
R/W	=	RIGHT OF WAY
C	=	CENTERLINE
AC.	=	ACRES
TWP.	=	TOWNSHIP
TR.	=	TRACT
IL	=	INLOT

LINE LEGEND		
	=	Blow-up Boundary
	=	Property Line
	=	Lot Split Line
	=	Section Line
	=	Centerline
	=	Right-of-Way Line
	=	Corporation Line

SURVEY INDEX		
LND. 28-86	LOT 11-35	D.B. 9-15
LND. 33-120	LOT 15-48	D.B. 18-20
LND. 39-28	LOT 21-52	D.B. 24-409
LND. 52-88		REC. 16-19
LND. 53-136		
LND. 54-168		



PREPARED BY: MIAMI COUNTY ENGINEER'S MAP DEPARTMENT  
PAUL P. HUELSKAMP, COUNTY ENGINEER  
DATE: MAY 6, 1996  
REVISED: February 4, 2020 DVENTURA

U.S. ROUTE 36 (R/W VARIES)  
LOTS 1 THRU 23 - D.B. 9 - 15  
LOTS 24 THRU 33 - D.B. 18 - 20  
LOTS 34 THRU 54 - D.B. 24 - 409

NOTE: LOTS 55 THRU 62 WERE ORIGINALLY PART OF THE "RESERVATION" LOT IN LENA. THESE LOTS WERE SUBDIVIDED BY DEED, AND NO PLAT WAS EVER RECORDED. DESCRIPTIONS FOR LOTS 60 AND 61 SEEM TO BE 5'-6" BUT DESCRIPTIONS FOR LOTS 56, 57, 58, AND 59 SHOULD NOT BE APPROVED WITHOUT SURVEYS BEING RECORDED.