

Fletcher
(Corporation)

Plat No 35

Scale 1/4 inch 40 Feet

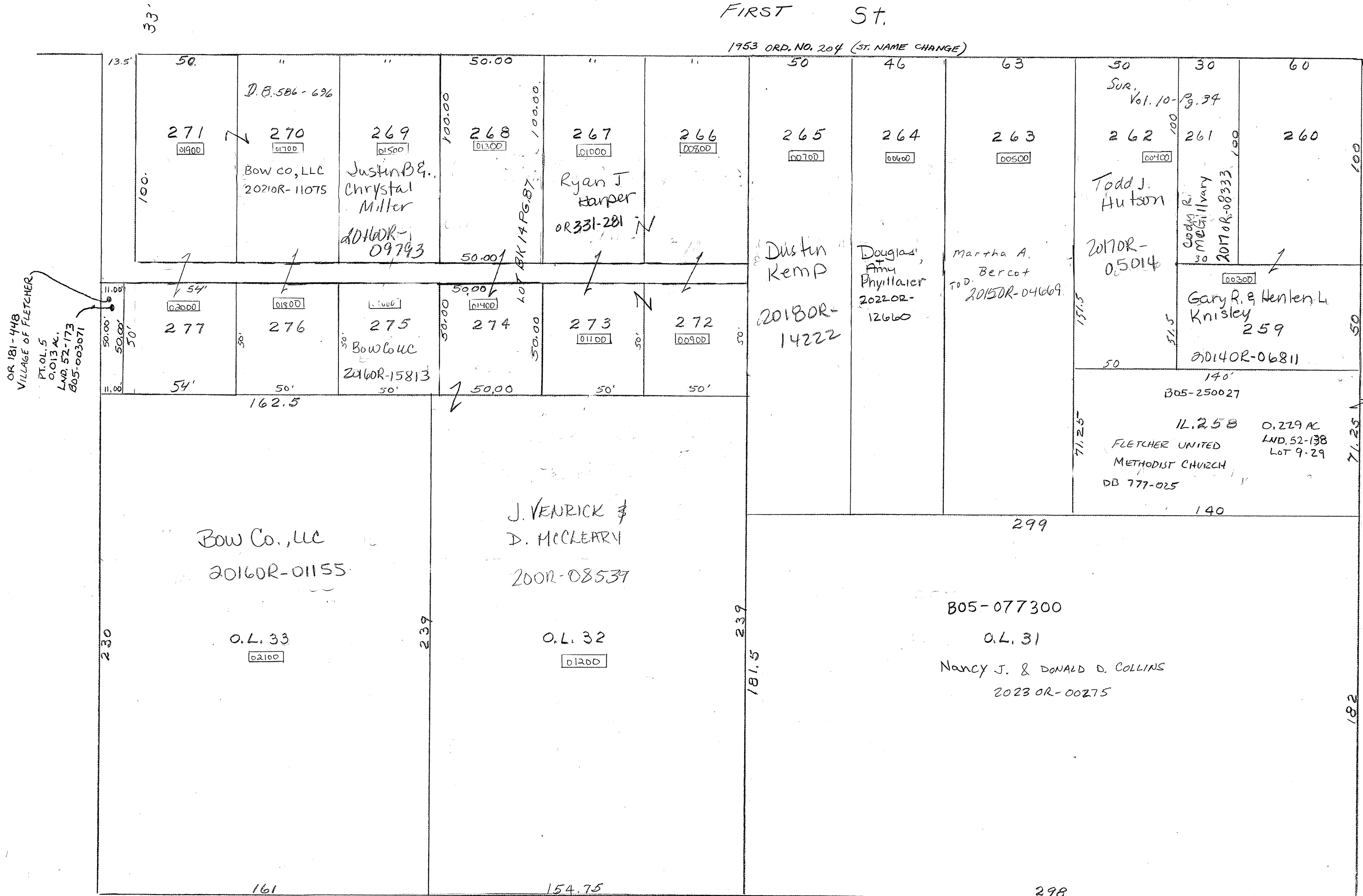
PARCEL NUMBER
B05-

North St.

Rec. BK. 3 PG 10

FIRST St.

1953 ORD. NO. 204 (ST. NAME CHANGE)



OR 181-448
VILLAGE OF FLETCHER
PT. 01, 5
0.013 AC.
LND. 52-173
BOS-003071