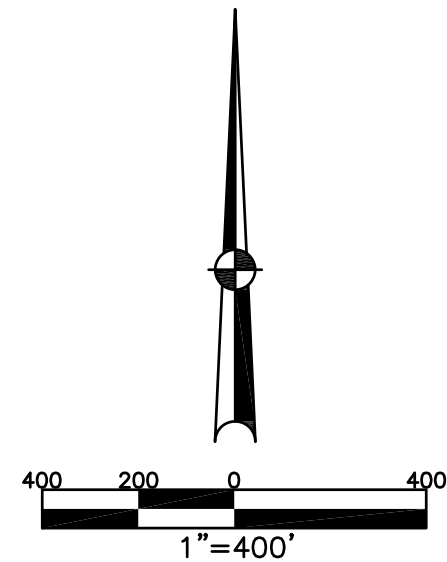


ELIZABETH TOWNSHIP
MIAMI COUNTY, OHIO

SECTION 4 TOWN 2 RANGE 10

PARCEL NUMBER
E09-_____

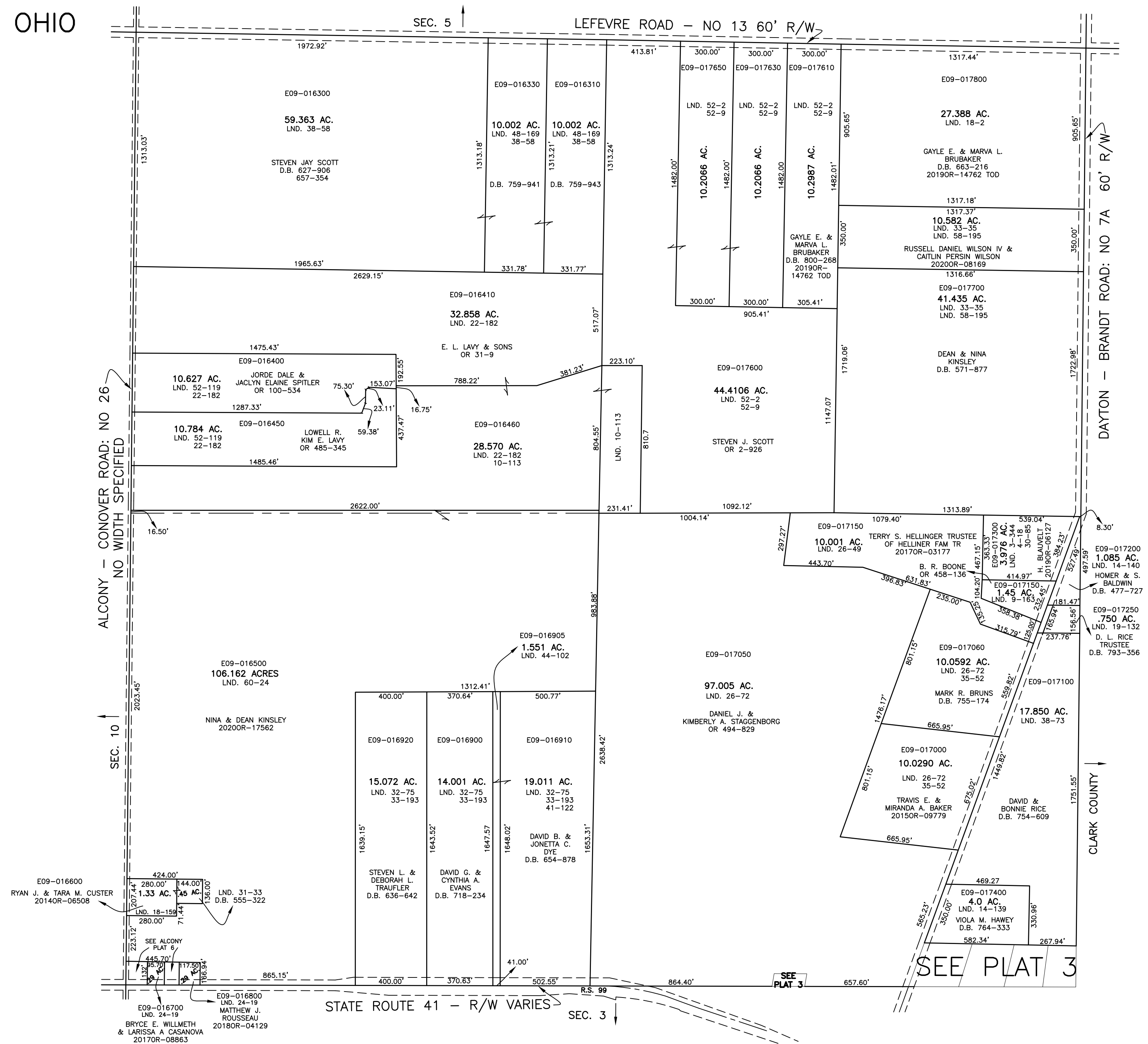
PLAT 4



ABBREVIATION LEGEND		
20140R-07759	=	RECORDER'S DOCUMENT NUMBER
OR 257-619	=	OFFICIAL RECORD 257 PAGE 619
D.B. 613-172	=	DEED BOOK 613, PAGE 172
REC. 15-72	=	RECORDER'S PLAT BOOK 15, PAGE 72
LND. 33-15	=	LAND SURVEY VOLUME 33, PAGE 15
LOT 19-12	=	LOT SURVEY VOLUME 19, PAGE 12
R.R. 8-29	=	ROAD RECORD VOLUME 8, PAGE 29
R/W	=	RIGHT OF WAY
C	=	CENTERLINE
AC.	=	ACRES
TWP.	=	TOWNSHIP
TR.	=	TRACT
②	=	LOT CREATED BY RECORDER'S PLAT

LINE LEGEND		
	=	Blow-up Boundary
	=	Property Line
	=	Lot Split Line
	=	Section Line
	=	Centerline
	=	Right-of-Way Line
	=	Corporation Line

SURVEY INDEX		
NORTHEAST QUARTER		
LND. 10-113		
LND. 18-2		
LND. 22-182		
LND. 33-35		
LND. 52-2		
LND. 52-9		
LND. 58-195		
SOUTHEAST QUARTER		
LND. 3-41	LND. 25-168	R.S. 99
LND. 3-344	LND. 25-177	
LND. 4-18	LND. 26-49	
LND. 9-163	LND. 26-72	
LND. 19-132	LND. 30-85	
LND. 14-139	LND. 38-73	
LND. 14-140	LND. 55-66	
LND. 25-129	LND. 60-24	
SOUTHWEST QUARTER		
LND. 18-159		R.S. 99
LND. 24-19		
LND. 32-75		
LND. 33-193		
LND. 41-122		
LND. 44-102		
LND. 31-33		
LND. 53-76		
NORTHWEST QUARTER		
LND. 22-182		
LND. 38-58		
LND. 48-169		
LND. 52-119		



PREPARED BY: MIAMI COUNTY ENGINEER'S MAP DEPARTMENT
PAUL F. HUELSKAMP, P.E., P.S., COUNTY ENGINEER
DATE: 5 APRIL 2019 KDIGIORMO
REVISED: November 24, 2020 CSHOUP

SEE PLAT 3

SEE PLAT 3