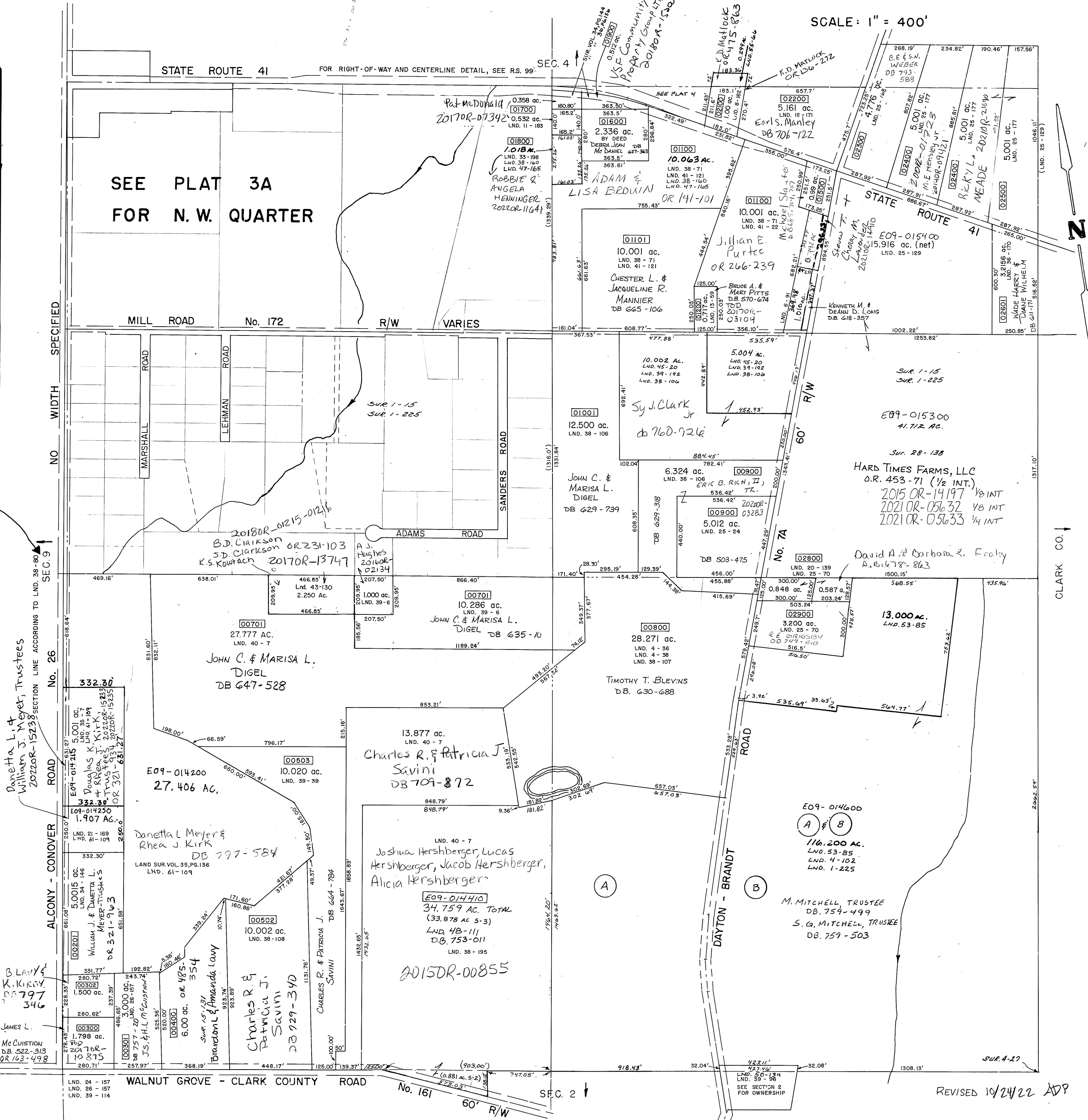


SCALE: 1" = 400'

SURVEYS	
<p><b>S.E. QUARTER</b></p> <p>SUR. 1-225 SUR. 4-27 SUR. 4-36 SUR. 4-38 SUR. 20-139 SUR. 25-70</p> <p>SUR. 4-102 LND. 38-107 LND. 39-106 LND. 39-1 LND. 39-90 LND. 40-7 LND. 50-134 LND. 53-85</p>	<p><b>N.E. QUARTER</b></p> <p>LND. 60-22</p>
<p><b>S.W. QUARTER</b></p> <p>SUR. 1-225 SUR. 15-131 SUR. 21-169 SUR. 24-157 SUR. 26-157</p> <p>SUR. 34-146 SUR. VOL. 35, PG. 7 SUR. VOL. 35, PG. 136 LND. 38-108 LND. 38-195 LND. 39-6 LND. 39-7 LND. 39-39 LND. 43-130 LND. 48-111 LND. 61-109</p>	<p><b>N.W. QUARTER</b></p> <p>SUR. 1-225 SUR. 1-15</p> <p>SUR. 8-45 SUR. 8-122 SUR. 8-139 SUR. 8-189 SUR. 9-33 SUR. 9-98 SUR. 10-70 SUR. 10-147 SUR. 10-191 SUR. 13-88 SUR. 13-195 SUR. 14-36 SUR. 16-194 SUR. 20-162 SUR. 20-187 SUR. 21-15 SUR. 24-74</p>

NOTE: SUR 38-80 SHOWS SEC. LINE & CENTERLINE OF ALCONY CONOVER RD. BEING 22' APART. ALL OTHER SURVEYS SHOW SEC. LINE & BEING THE SAME LINE. D.V. 6-26-91



Alcony - Conover Road  
No. 26  
No. 161  
No. 7A  
No. 7B

NO WIDTH SPECIFIED  
NO. 26

SECTION 9

SECTION 2

SECTION 4

SECTION 3

SECTION 2

SECTION 1

SECTION 4

SECTION 3

SECTION 2

SECTION 1

SECTION 4

SECTION 3

SECTION 2

SECTION 1

SECTION 4

SECTION 3

SECTION 2

SECTION 1