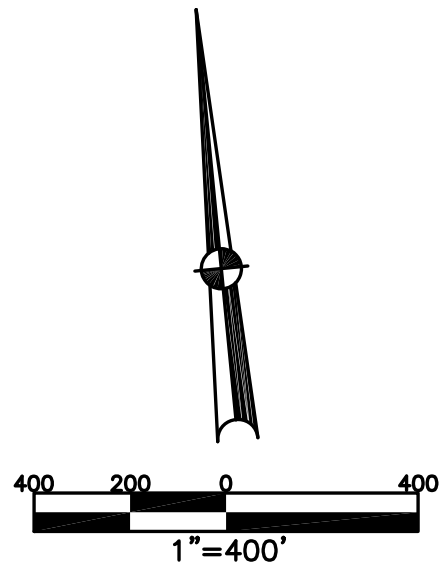


ELIZABETH TOWNSHIP
MIAMI COUNTY, OHIO

SECTION 2 TOWN 2 RANGE 10

PARCEL NUMBER
E09-_____

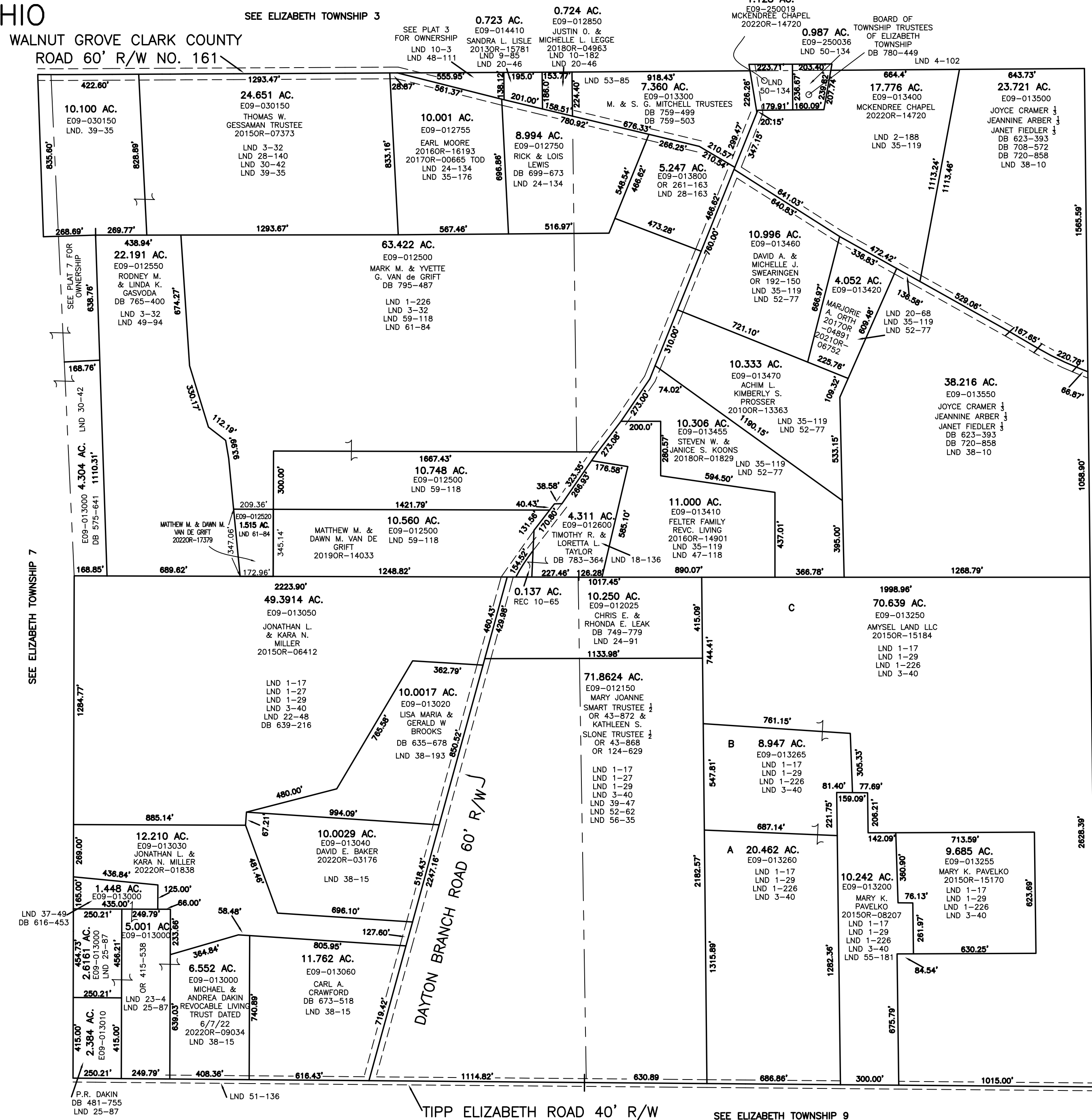
PLAT 2



ABBREVIATION LEGEND	
2014OR-07759	= RECORDER'S DOCUMENT NUMBER
OR 257-619	= OFFICIAL RECORD 257 PAGE 619
D.B. 613-172	= DEED BOOK 613, PAGE 172
REC. 15-72	= RECORDER'S PLAT BOOK 15, PAGE 72
LND. 33-15	= LAND SURVEY VOLUME 33, PAGE 15
LOT 19-12	= LOT SURVEY VOLUME 19, PAGE 12
R.R. 8-29	= ROAD RECORD VOLUME 8, PAGE 29
R/W	= RIGHT OF WAY
C	= CENTERLINE
AC.	= ACRES
TWP.	= TOWNSHIP
TR.	= TRACT
②	= LOT CREATED BY RECORDER'S PLAT

LINE LEGEND	
	Blow-up Boundary
	Property Line
	Lot Split Line
	Section Line
	Centerline
	Right-of-Way Line
	Corporation Line

SURVEY INDEX	
NORTHEAST QUARTER	
LND 1-226	LND 34-119
LND 2-188	LND 38-10
LND 3-32	LND 47-118
LND 3-40	LND 50-134
LND 4-102	LND 51-141
LND 18-136	LND 52-77
LND 20-68	LND 53-85
LND 24-134	
SOUTHEAST QUARTER	
LND 1-17	LND 56-35
LND 1-27	LND 56-189
LND 1-29	
LND 1-226	
LND 3-40	
LND 24-91	
LND 39-47	
LND 52-62	
LND 55-181	
SOUTHWEST QUARTER	
LND 1-17	LND 38-15
LND 1-27	LND 38-193
LND 1-29	LND 39-47
LND 1-226	LND 51-136
LND 3-40	LND 52-62
LND 22-48	LND 56-35
LND 23-4	
LND 24-91	
LND 25-97	
LND 37-49	
NORTHWEST QUARTER	
LND 1-226	LND 28-140
LND 3-32	LND 30-42
LND 9-85	LND 35-176
LND 10-3	LND 39-35
LND 10-182	LND 48-111
LND 18-136	LND 49-94
LND 20-46	LND 49-94
LND 24-134	LND 61-84



PREPARED BY: MIAMI COUNTY ENGINEER'S MAP DEPARTMENT
PAUL P. HUELSKAMP, P.E., P.S., COUNTY ENGINEER
DATE: NOVEMBER 21, 2019 MBR
REVISED: December 12, 2022 JVINCENT

P.R. DAKIN
DB 481-755
LND 25-87

TIPP ELIZABETH ROAD 40' R/W

SEE ELIZABETH TOWNSHIP 9