

RANGE 10

TOWN 2

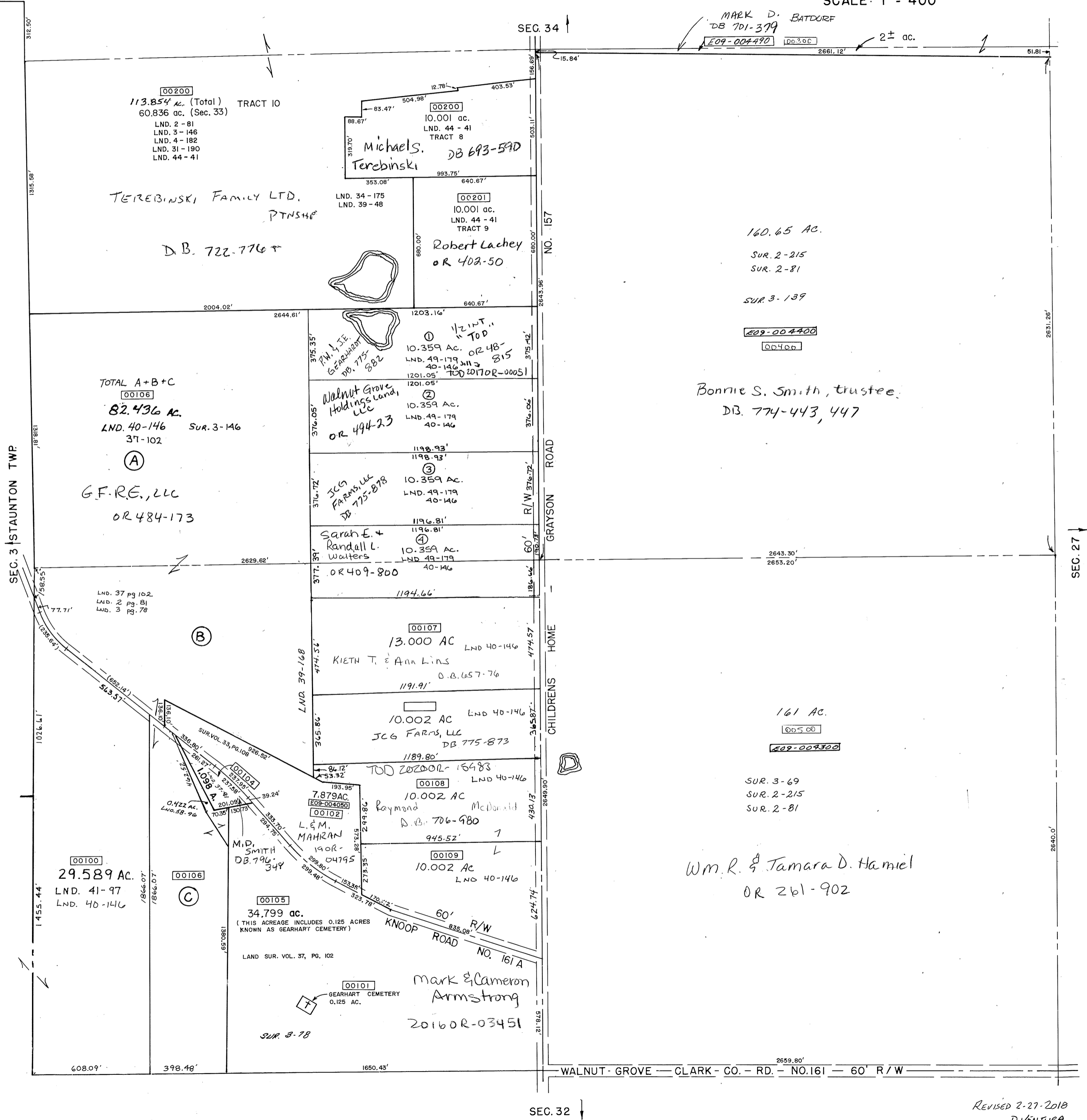
SECTION 33

ELIZABETH TOWNSHIP

PLAT NO. 28

SCALE: 1" = 400'

SURVEYS	
SUR. 3-139 SUR. 2-215 SUR. 2-81	S.E. QUARTER
SUR. 2-215 SUR. 3-139 SUR. 3-140 SUR. 2-81	N.E. QUARTER
SUR. 3-44 SUR. 3-78 SUR. 2-81 SUR. 33-108 SUR. Vol. 37, Pg. 91 SUR. Vol. 37, Pg. 102 LND. 39 pg. 168 LND. 40 pg. 146 LND. 49 pg. 179 LND. 58-96	S.W. QUARTER
SUR. 3-146 SUR. 4-182 SUR. 2-81 SUR. Vol. 31, Pg. 190 SUR. Vol. 34, Pg. 175 SUR. Vol. 37, Pg. 102 LND. 39-48 LND. 39-168 LND. 44-41 LND. 49-179	N.W. QUARTER



MARK D. BATDORF
DB 701-379
E09-004490

160.65 AC.
SUR. 2-215
SUR. 2-81
SUR. 3-139

E09-004400
00400
Bonnie S. Smith, trustee
DB. 774-443, 447

161 AC.
00500
E09-009300
SUR. 3-69
SUR. 2-215
SUR. 2-81

Wm. R. & Tamara D. Hamiel
OR 261-902

Mark & Cameron
Armstrong
20160R-03451