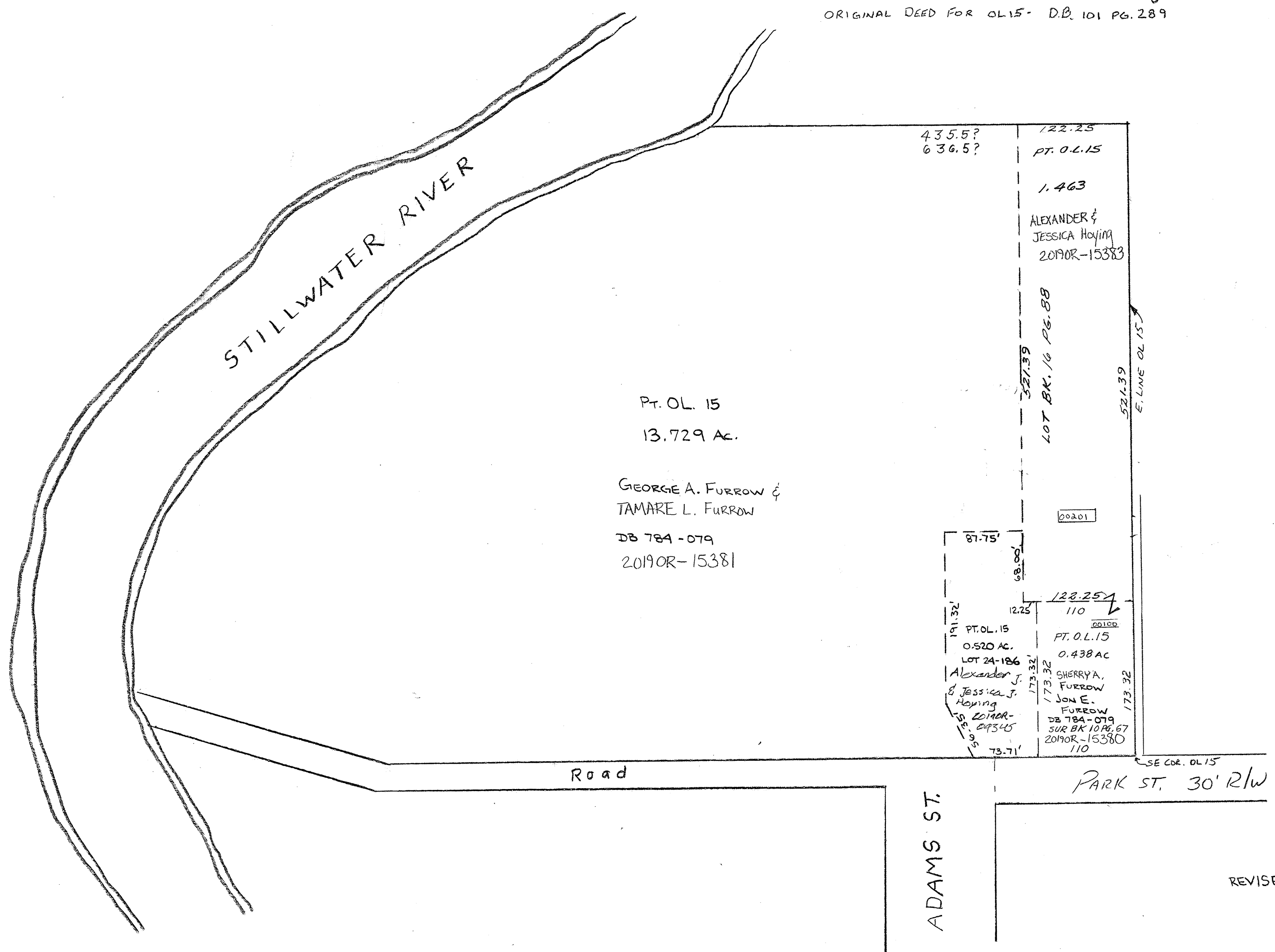


SMDA NUMBER  
H19-NH032 - - - - -

RECORDER'S PLAT

O.L. 15 Plat BK. 2 Pg. 155  
ORIGINAL DEED FOR OL15- D.B. 101 PG. 289



STILLWATER RIVER

PT. O.L. 15  
13.729 AC.

GEORGE A. FURROW &  
TAMARE L. FURROW  
DB 784-079  
2019OR-15381

435.5?  
636.5?

122.25  
PT. O.L. 15

1.463  
ALEXANDER &  
JESSICA Hoyle  
2019OR-15383

327.39  
LOT BK. 1/4 PG. 88

521.39  
E. LINE OL 15

00201

87.75'  
68.00'

191.32'  
PT. O.L. 15  
0.520 AC.  
LOT 24-186  
Alexander J.  
& Jessica J.  
Hoyle  
2019OR-  
15383

122.25  
110  
PT. O.L. 15  
0.438 AC  
SHERRYA,  
FURROW,  
JON E.  
FURROW  
DB 784-079  
SUR BK 10 PG. 67  
2019OR-15380  
110

Road

ADAMS ST.

PARK ST. 30' R/W