

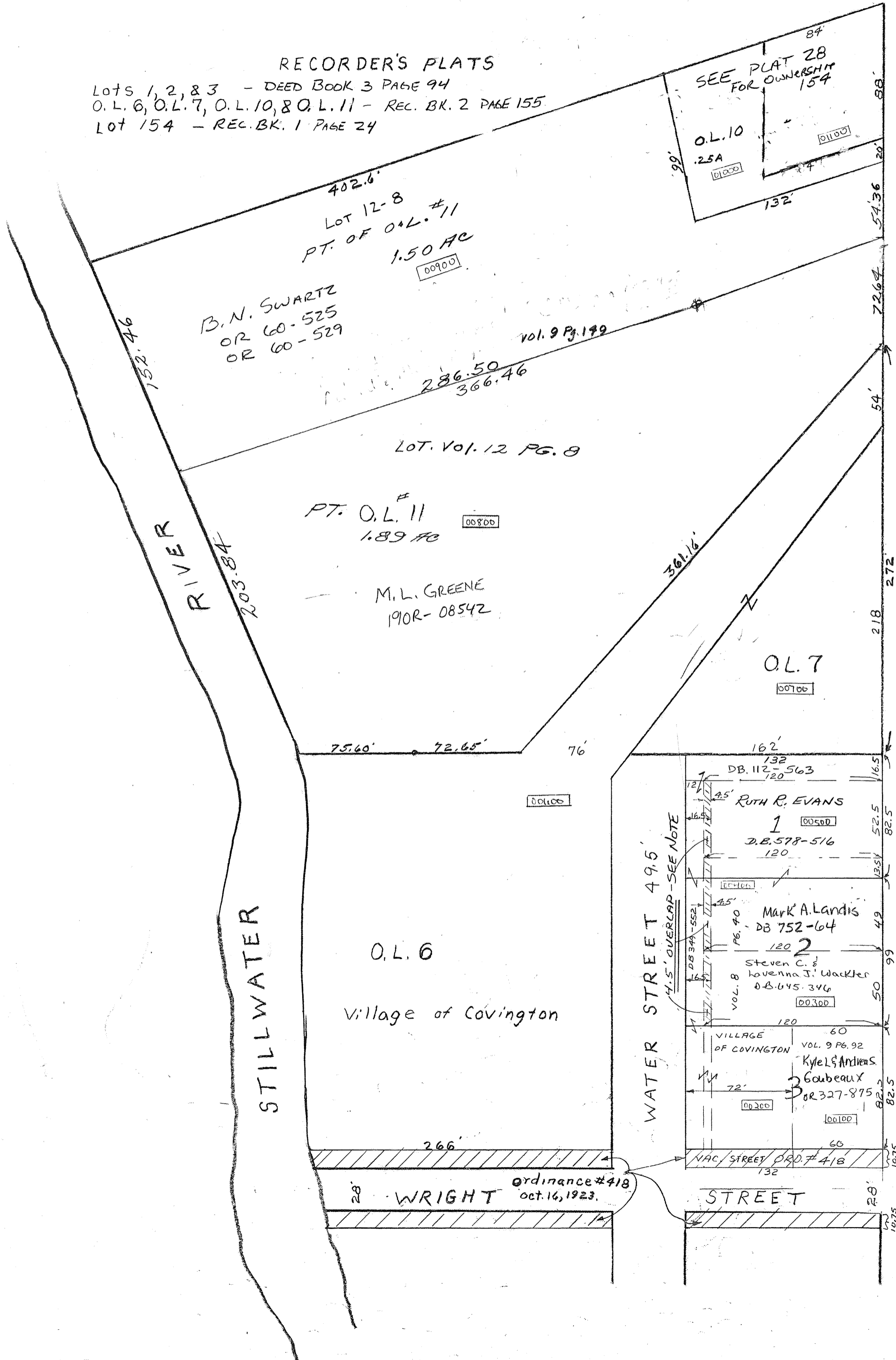
COVINGTON

PLAT NO. 27

SMDA NUMBER
H19-NH027- - - - -

Scale-1-Inch 60 Feet

RECORDER'S PLATS
Lots 1, 2, & 3 - DEED BOOK 3 PAGE 94
O.L. 6, O.L. 7, O.L. 10, & O.L. 11 - REC. BK. 2 PAGE 155
Lot 154 - REC. BK. 1 PAGE 24



REGARDING 4.5' OVERLAP LOTS 1 & 2

NOTE: DAVID L. FACE ACQUIRED ALL OF LOTS 1 AND 2 AND 16 1/2 FEET OFF THE WEST END OF LOT 3 BY DEED BOOK 107 PAGE 207. HE THEN DEEDS 16 1/2' OFF THE NORTH SIDE OF LOT 1 TO THE VILLAGE OF COVINGTON - DB 112-563. HE THEN DEEDS LOTS 1 AND 2, EXCEPT 1 ROD OFF THE NORTH SIDE OF LOT 1 AND EXCEPT 12 FEET OFF THE WEST END OF LOTS 1 AND 2 TO LEWIS COATE BY DB. 125-629. FACE RETAINS THE 12 FEET OF THE WEST END OF LOTS 1 & 2. MARGARET E. FACE, DAVID L. FACE'S WIDOW, DEEDS 16 1/2 FEET OFF THE WEST END OF LOTS 1, 2, AND 3 TO JOSEPH L. CRAMER (D.B. 152-531) WHEN SHE ONLY HAD 12 FEET OFF THE WEST END OF LOTS 1 AND 2 AND 16 1/2 FEET OFF THE WEST END OF LOT 3. CRAMER DEEDS TO KRAUS (DB 251-148) AND KRAUS DEEDS TO COVINGTON (DB 349-552)

D. VENTURA
DEP. ENG.
1-11-2012

NOTE

ORIG. PLAT OF LOTS 1, 2, & 3
RECORDED IN DEED BOOK 3 PG. 94

ORIG. NO. ON PLAT	PRESENT NO	SIZE
1	1	5 POLES x 8 POLES = 82.5' x 132
6	2	6 " x 8 " = 99' x 132
7	3	5 " x 8 " = 82.5' x 132