

PARCEL NUMBER
H19- - - - -

RECORDER'S PLATS

Lots 37, 38, & 39
Lots 58 thru 63
Lots 171, 172, & 173

Deed BK. 11 Pg. 342
Deed BK. 20 Pg. 227
Plat BK. 1 Pg. 87

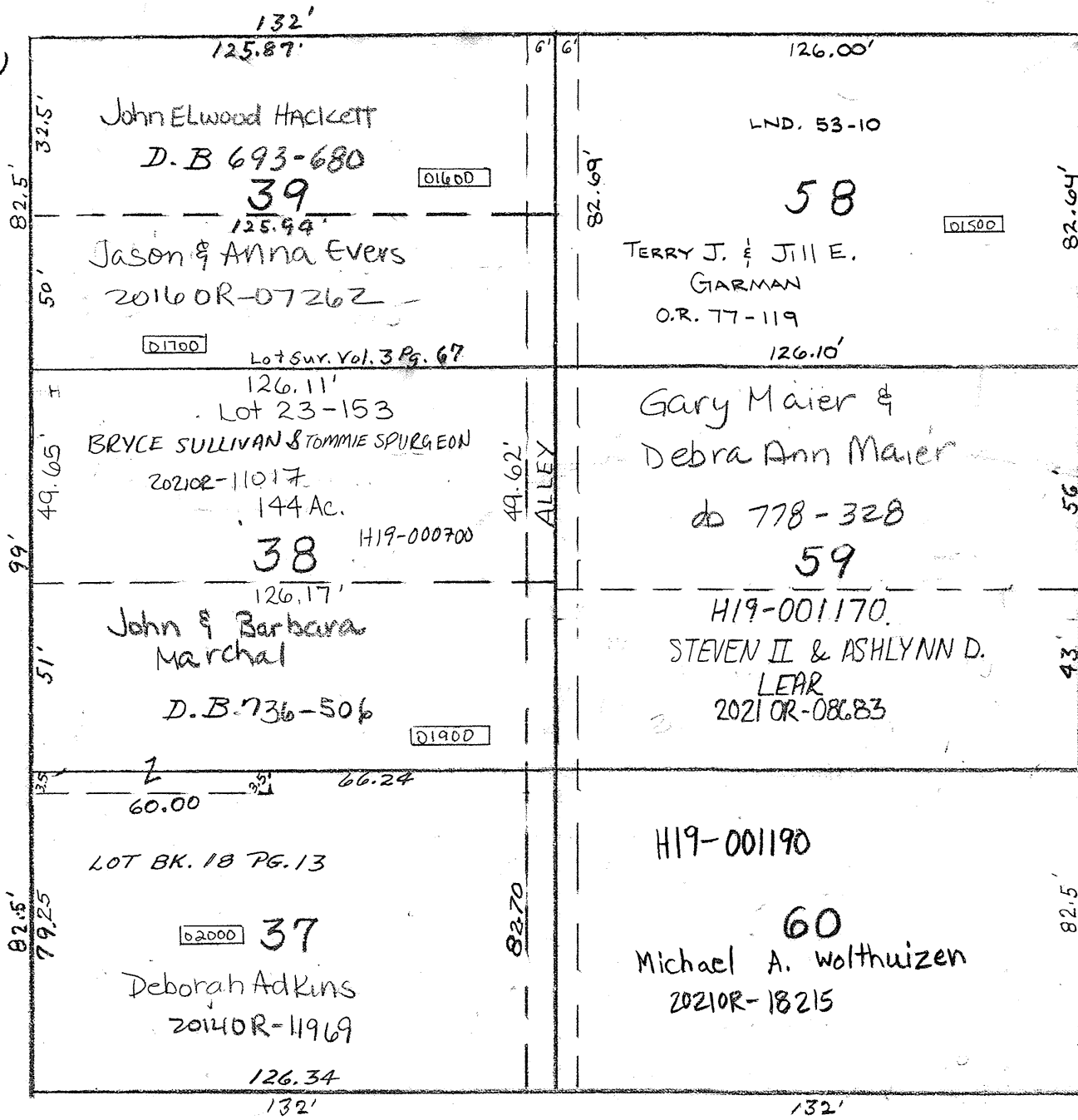
SPRING STREET

STREET

49.5'

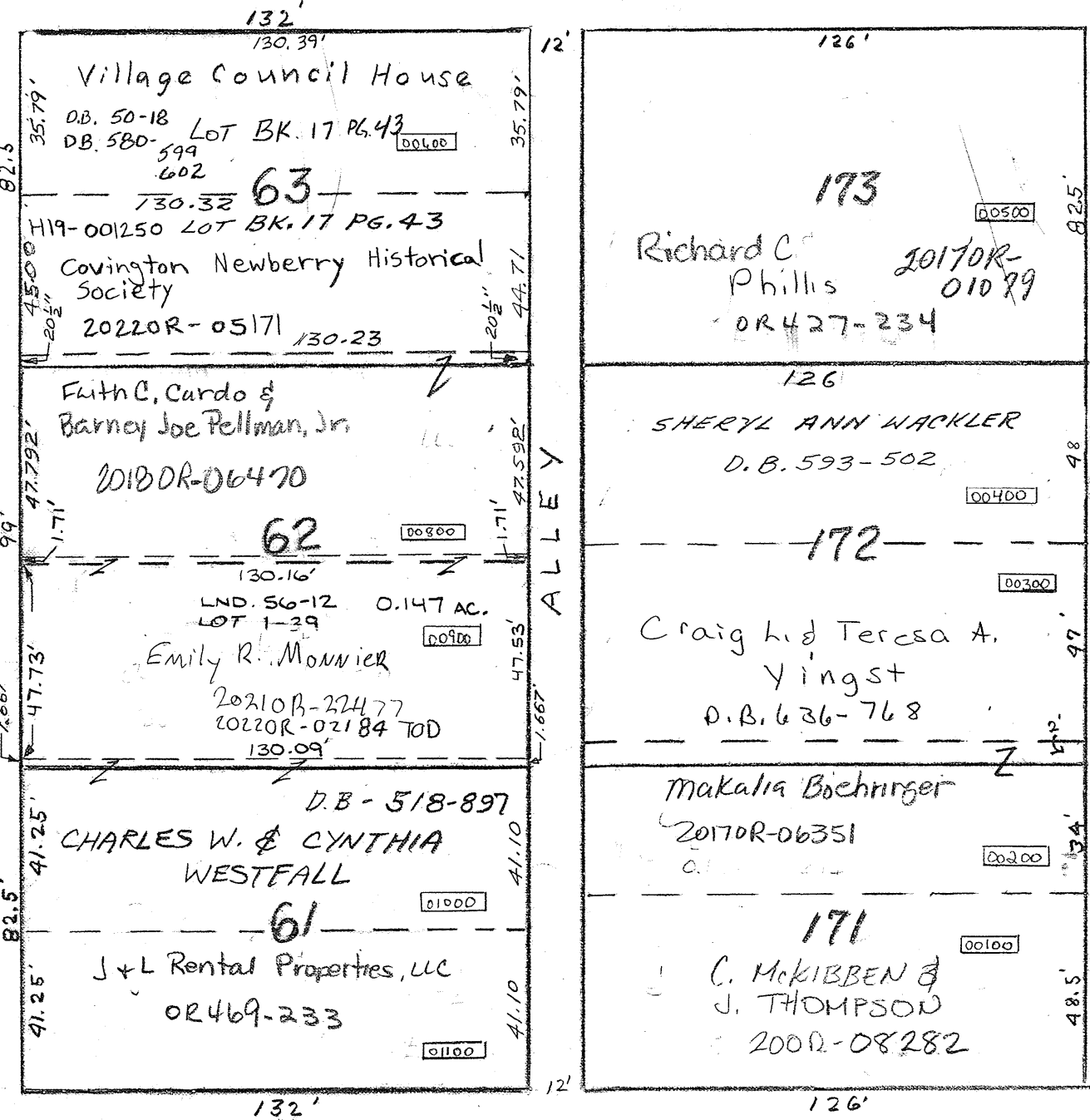
57.75
(original Plat)

REC. 28-24 & PLAT
HIGH STREET



THOMPSON STREET

PEARL STREET 49.5'



STREET

49.5'

WALL STREET 49.5'