

CONCORD TOWNSHIP
MIAMI COUNTY, OHIO

PT. SOUTHEAST QUARTER
SECTION 4 TOWN 4 RANGE 6

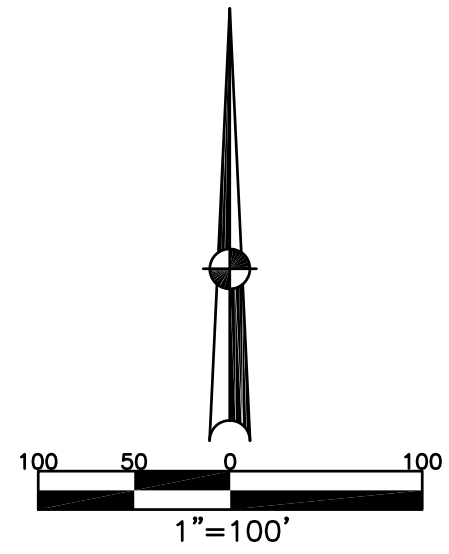
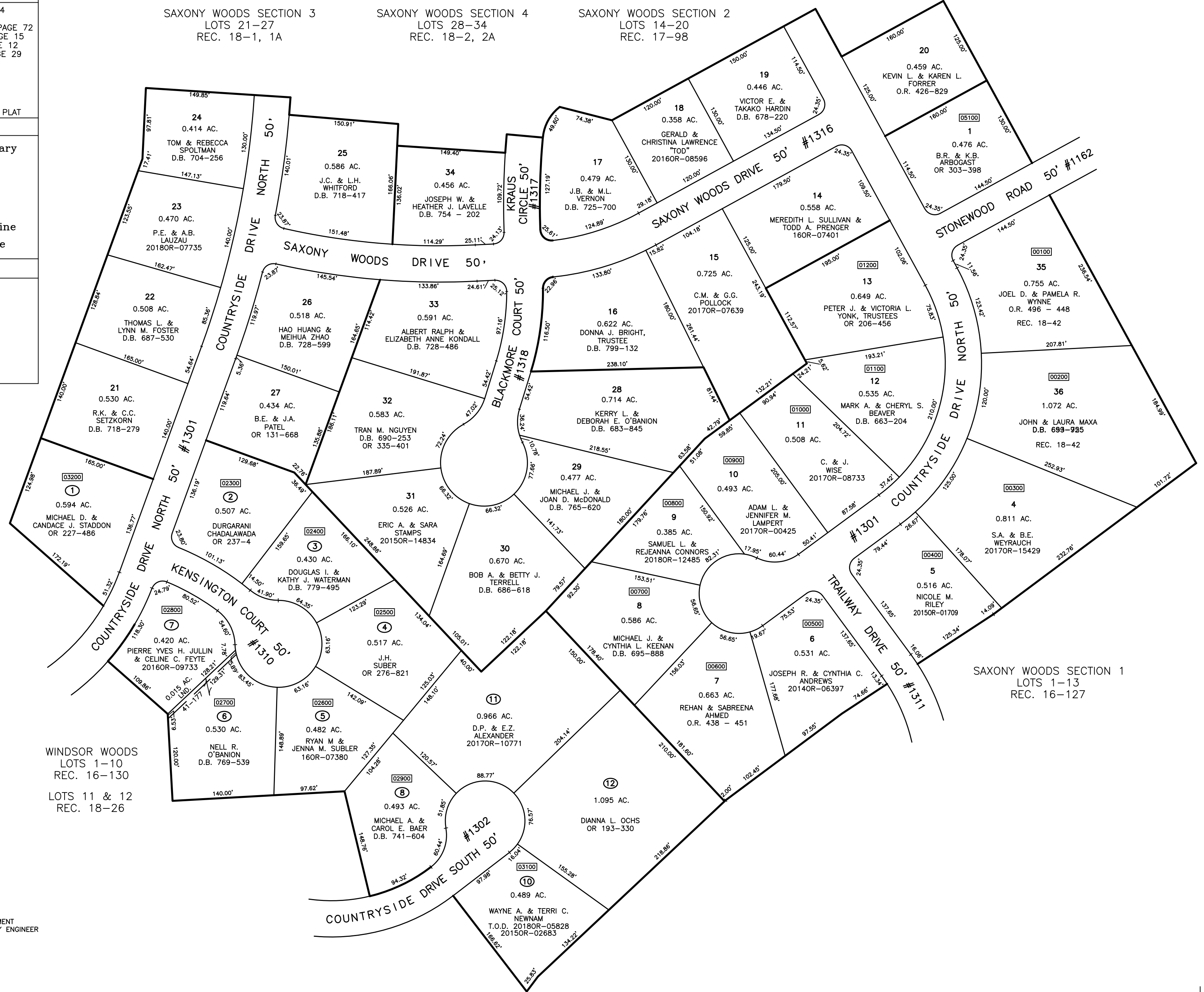
SMDA NUMBER
C06-CC005M-_____

PLAT 5 M

ABBREVIATION LEGEND	
OR 56-454	= OFFICIAL RECORD 56 PAGE 454
D.B. 613-172	= DEED BOOK 613, PAGE 172
REC. 15-72	= RECORDER'S PLAT BOOK 15, PAGE 72
LND. 33-15	= LAND SURVEY VOLUME 33, PAGE 15
LOT 19-12	= LOT SURVEY VOLUME 19, PAGE 12
R.R. 8-29	= ROAD RECORD VOLUME 8, PAGE 29
R/W	= RIGHT OF WAY
C	= CENTERLINE
AC.	= ACRES
TWP.	= TOWNSHIP
TR.	= TRACT
Ⓢ	= LOT CREATED BY RECORDER'S PLAT

LINE LEGEND	
	Blow-up Boundary
	Property Line
	Lot Split Line
	Section Line
	Centerline
	Right-of-Way Line
	Corporation Line

SURVEY INDEX	
REC. 16-127	LND. 41-177
REC. 16-130	LND. 43-10
REC. 17-98	
REC. 18-1, 1A	
REC. 18-2, 2A	
REC. 18-26	
REC. 18-42(REPLAT)	



PREPARED BY: MIAMI COUNTY ENGINEER'S MAP DEPARTMENT
PAUL P. HUELSKAMP, P.E., P.S., COUNTY ENGINEER
DATE: NOVEMBER 1994
REVISED: JUNE 26, 2018 DV