

CONCORD TOWNSHIP  
MIAMI COUNTY, OHIO

PT. SOUTHEAST QUARTER  
SECTION 4 TOWN 4 RANGE 6

PARCEL ID NUMBER  
C06-\_\_\_\_\_

STANDING STONE DEVELOPMENT  
LOTS 1-18  
REC. 17-1

PLAT 5 J

ABBREVIATION LEGEND	
20140R-07759	= RECORDER'S DOCUMENT NUMBER
OR 72-186	= OFFICIAL RECORD 72 PAGE 186
D.B. 613-172	= DEED BOOK 613, PAGE 172
REC. 15-72	= RECORDER'S PLAT BOOK 15, PAGE 72
LND. 33-15	= LAND SURVEY VOLUME 33, PAGE 15
LOT 19-12	= LOT SURVEY VOLUME 19, PAGE 12
R.R. 8-29	= ROAD RECORD VOLUME 8, PAGE 29
R/W	= RIGHT OF WAY
C	= CENTERLINE
AC.	= ACRES
TWP.	= TOWNSHIP
TR.	= TRACT
②	= LOT CREATED BY RECORDER'S PLAT

SURVEY INDEX	
REC. 13-87	LND. 30-141
REC. 15-77	LND. 31-21
REC. 16-31	LND. 31-146
REC. 16-117	LND. 34-165
REC. 16-129	LND. 36-32
REC. 17-1	LND. 36-78
REC. 17-86	LND. 37-60
REC. 18-85	LND. 38-170
REC. 19-19	LND. 42-28
REC. 20-94	RR 8-167
REC. 23-14	RR 8-199
REC. 29-38	

LINE LEGEND	
—	Blow-up Boundary
—	Property Line
- - -	Lot Split Line
- - -	Section Line
- - -	Centerline
- - -	Right-of-Way Line
////	Corporation Line

**BROKEN WOODS VILLAGE**  
SECTION ONE, LOTS 1-31  
REC. 13-87

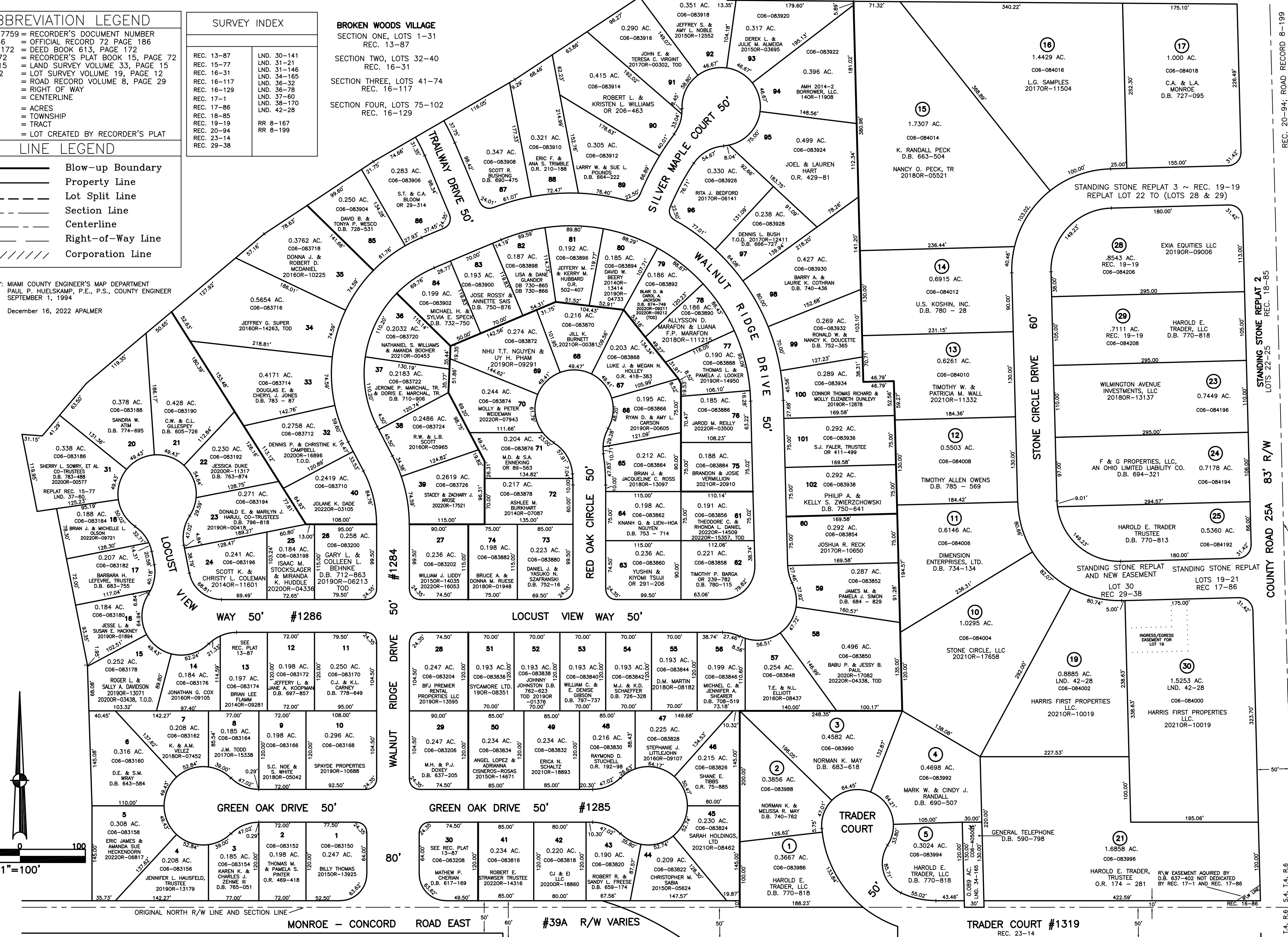
SECTION TWO, LOTS 32-40  
REC. 16-31

SECTION THREE, LOTS 41-74  
REC. 16-117

SECTION FOUR, LOTS 75-102  
REC. 16-129

PREPARED BY: MIAMI COUNTY ENGINEER'S MAP DEPARTMENT  
PAUL P. HUELSKAMP, P.E., P.S., COUNTY ENGINEER  
DATE: SEPTEMBER 1, 1994

REVISED: December 16, 2022 APALMER



REC. 20-94; ROAD RECORD 8-199

STANDING STONE REPLAT 2  
LOTS 22-25  
REC. 18-85

COUNTY ROAD 25A  
83' R/W

CENTERLINE AND SECTION LINE

REC. 20-94; ROAD RECORD 8-199

S.9, T.4, R.6 S.4, T.4, R.6  
S.10, T.4, R.6 S.3, T.4, R.6