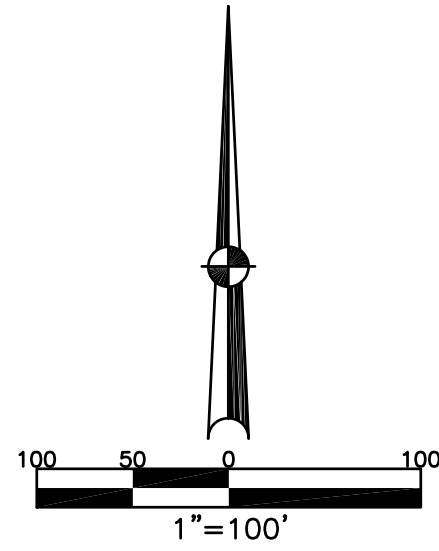


CONCORD TOWNSHIP
MIAMI COUNTY, OHIO

PT. SOUTH SECTION 4
TOWN 4
RANGE 6

SMDA NUMBER
C06-CC005G-

PLAT 5 G



ABBREVIATION LEGEND	
OR 71-314	= OFFICIAL RECORD 71 PAGE 314
D.B. 613-172	= DEED BOOK 613, PAGE 172
REC. 15-72	= RECORDER'S PLAT BOOK 15, PAGE 72
LND. 33-15	= LAND SURVEY VOLUME 33, PAGE 15
LOT 19-12	= LOT SURVEY VOLUME 19, PAGE 12
R.R. 8-29	= ROAD RECORD VOLUME 8, PAGE 29
R/W	= RIGHT OF WAY
CL	= CENTERLINE
AC.	= ACRES
TWP.	= TOWNSHIP
TR.	= TRACT
Ⓢ	= LOT CREATED BY RECORDER'S PLAT

LINE LEGEND	
	Blow-up Boundary
	Property Line
	Lot Split Line
	Section Line
	Centerline
	Right-of-Way Line
	Corporation Line

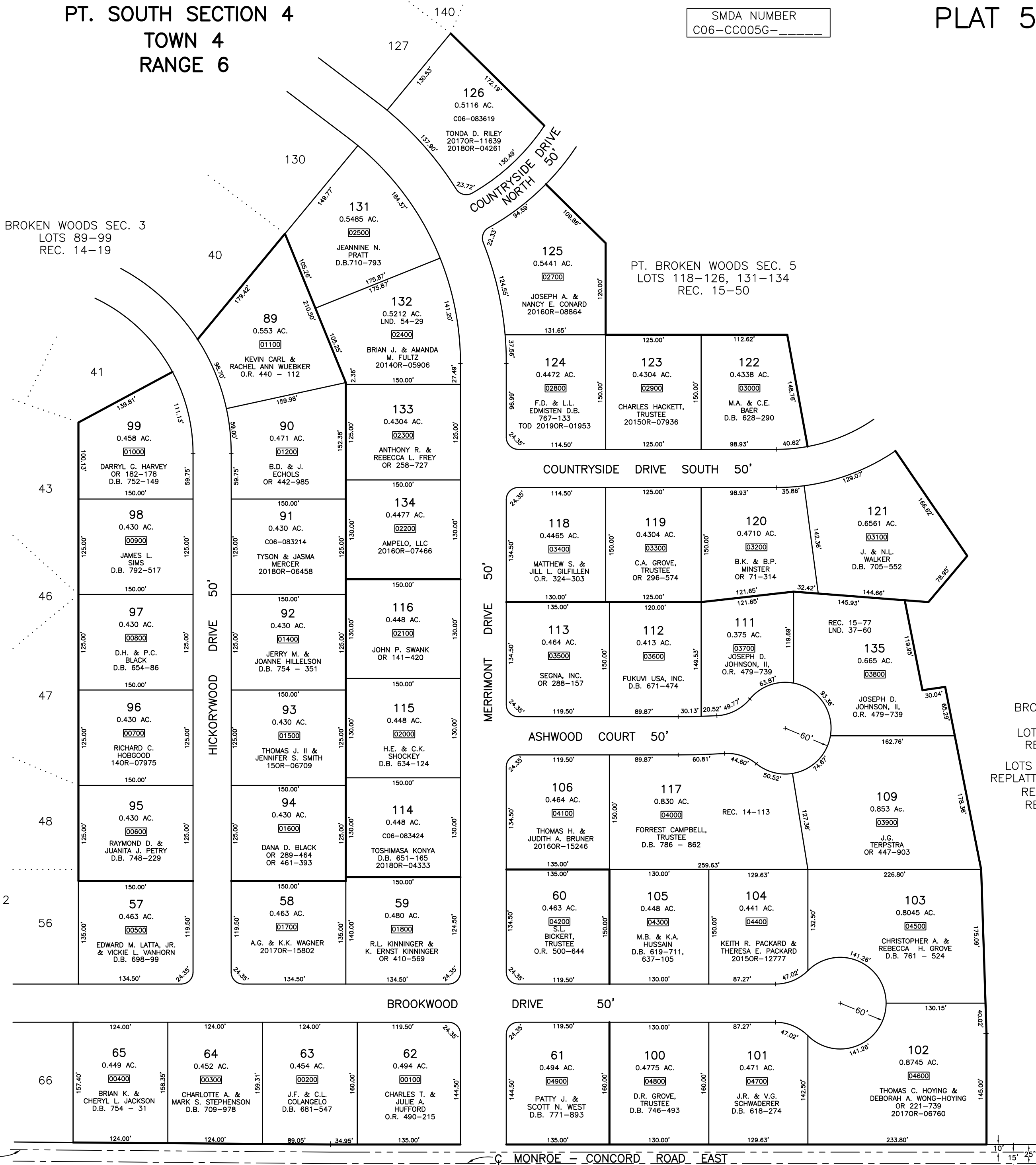
SURVEY INDEX	
REC. 12-136	LND. 37-60
REC. 14-19	
REC. 14-90	
REC. 14-113	
REC. 15-50	
REC. 15-77	

PT. BROKEN WOODS SEC. 2
LOTS 57-65
REC. 12-136

PREPARED BY: MIAMI COUNTY ENGINEER'S MAP DEPARTMENT
PAUL P. HUELSKAMP, P.E., P.S., COUNTY ENGINEER
DATE: MAY 24, 1995

REVISED: February 26, 2019 IGRIFFIN

SECTION LINE
AND ORIGINAL PROPERTY LINE



BROKEN WOODS
SEC. 4
LOTS 100-116
REC. 14-90
LOTS 107,108,110
REPLATTED TO 117,135
REC. 14-113
REC. 15-77

MONROE - CONCORD ROAD EAST

10'
15'
25'