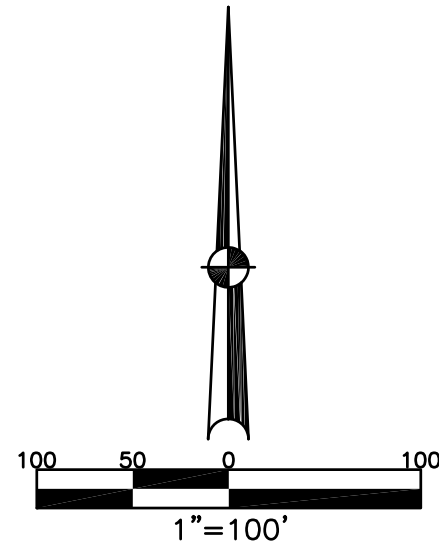


CONCORD TOWNSHIP  
MIAMI COUNTY, OHIO

PT. SOUTH SECTION 4  
TOWN 4  
RANGE 6

SMDA NUMBER  
C06-CC005E-

PLAT 5 E



PT. BROKEN WOODS SEC. 7  
LOTS 148, 164-170  
REC. 17-6

PT. SWEET WOODS ESTATES  
LOTS 1-6  
REC. 18-19

PT. BROKEN WOODS SEC. 2  
LOTS 38-56, 66-85  
REC. 12-136

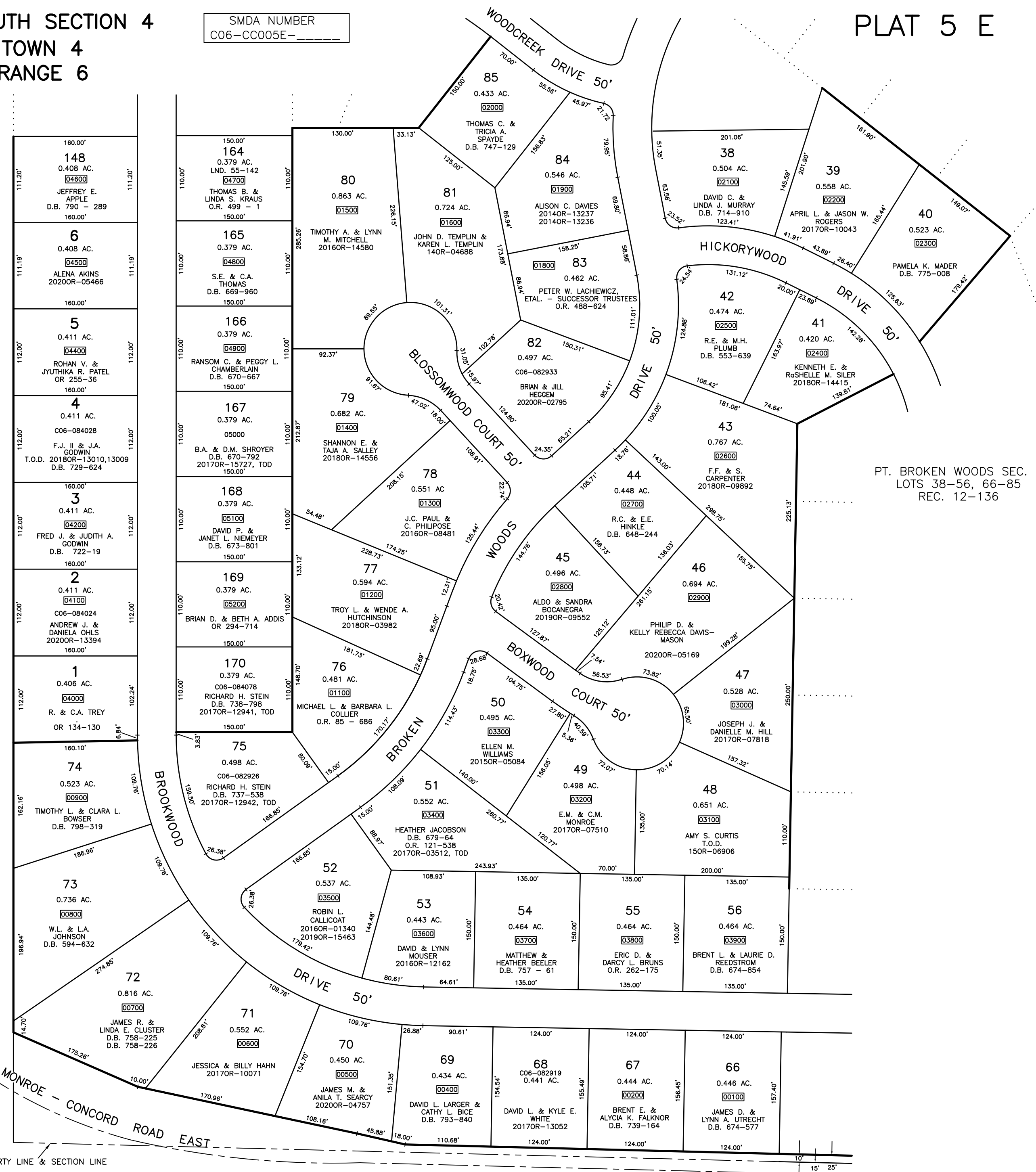
ABBREVIATION LEGEND	
2014OR-07759	= RECORDER'S DOCUMENT NUMBER
OR 88-286	= OFFICIAL RECORD 88 PAGE 286
D.B. 613-172	= DEED BOOK 613, PAGE 172
REC. 15-72	= RECORDER'S PLAT BOOK 15, PAGE 72
LND. 33-15	= LAND SURVEY VOLUME 33, PAGE 15
LOT 19-12	= LOT SURVEY VOLUME 19, PAGE 12
R.R. 8-29	= ROAD RECORD VOLUME 8, PAGE 29
R/W	= RIGHT OF WAY
C	= CENTERLINE
AC.	= ACRES
TWP.	= TOWNSHIP
TR.	= TRACT
②	= LOT CREATED BY RECORDER'S PLAT

LINE LEGEND	
	Blow-up Boundary
	Property Line
	Lot Split Line
	Section Line
	Centerline
	Right-of-Way Line
	Corporation Line

SURVEY INDEX		
REC. 12-136	LND. 34-108	
REC. 17-6	LND. 36-187,188	
REC. 18-19	LND. 55-142	



PREPARED BY: MIAMI COUNTY ENGINEER'S MAP DEPARTMENT  
PAUL P. HUELSKAMP, P.E., P.S., COUNTY ENGINEER  
DATE: APRIL 3, 1995  
REVISED: September 21, 2020 SSHORT

ORIGINAL PROPERTY LINE & SECTION LINE

