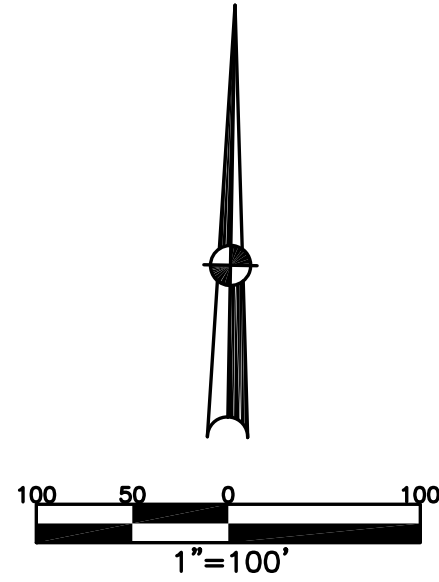


CONCORD TWP.
MIAMI COUNTY, OHIO

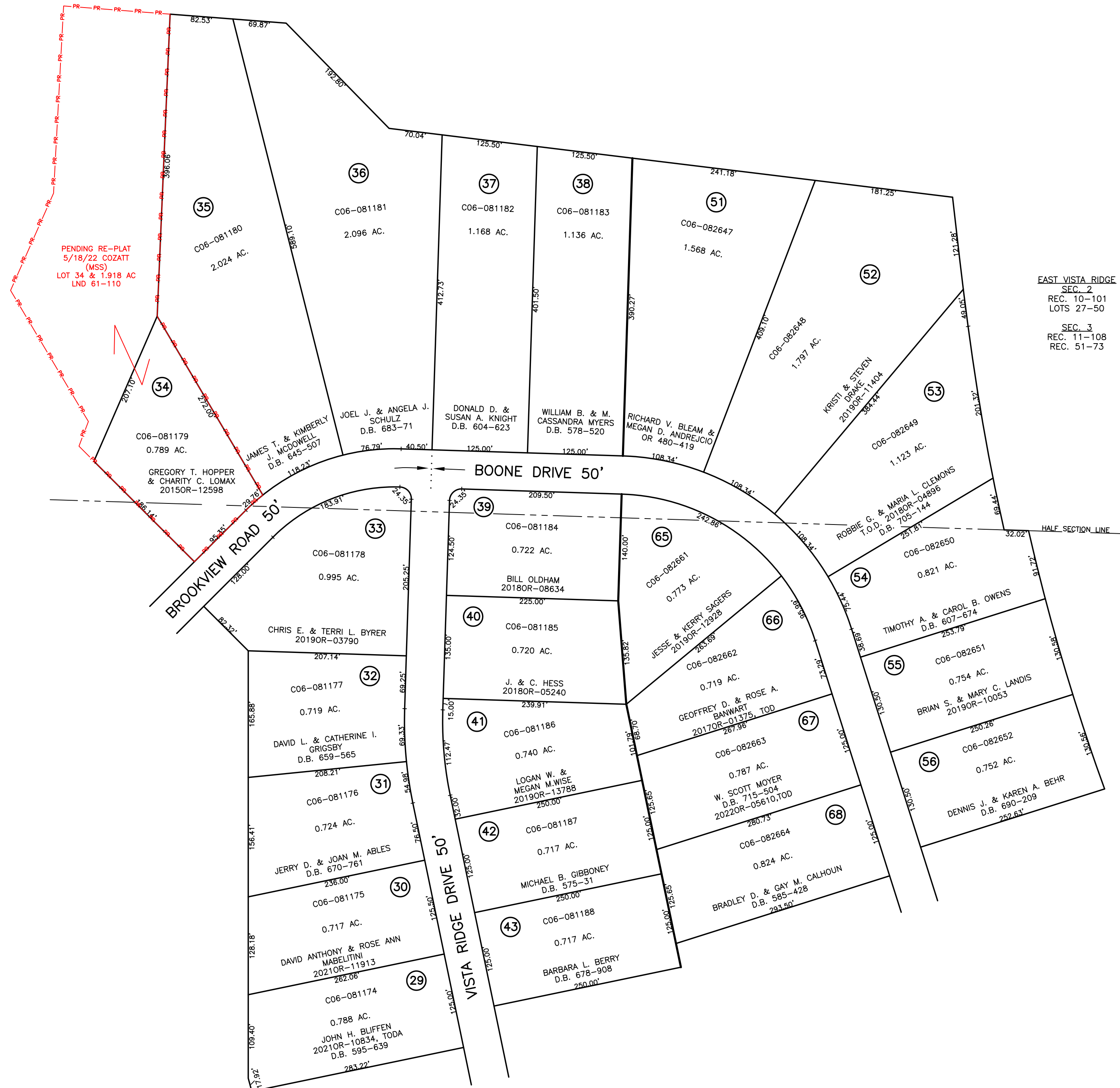
SECTION 3 TOWN 4 RANGE 6
PT. NW, SW 1/4

PARCEL NUMBER
C06-_____

PLAT 4-B



ABBREVIATION LEGEND	
2014OR-07759	= RECORDER'S DOCUMENT NUMBER
OR 257-619	= OFFICIAL RECORD 257 PAGE 619
D.B. 613-172	= DEED BOOK 613, PAGE 172
REC. 15-72	= RECORDER'S PLAT BOOK 15, PAGE 72
LND. 33-15	= LAND SURVEY VOLUME 33, PAGE 15
LOT 19-12	= LOT SURVEY VOLUME 19, PAGE 12
R.R. 8-29	= ROAD RECORD VOLUME 8, PAGE 29
R/W	= RIGHT OF WAY
C	= CENTERLINE
AC.	= ACRES
TWP.	= TOWNSHIP
TR.	= TRACT
Ⓢ	= LOT CREATED BY RECORDER'S PLAT
LINE LEGEND	
	Blow-up Boundary
	Property Line
	Lot Split Line
	Section Line
	Centerline
	Right-of-Way Line
	Corporation Line
SURVEY INDEX	
REC. 10-101	
REC. 11-108	



EAST VISTA RIDGE
SEC. 2
REC. 10-101
LOTS 27-50
SEC. 3
REC. 11-108
REC. 51-73

PREPARED BY: MIAMI COUNTY ENGINEER'S MAP DEPARTMENT
PAUL P. HUELSKAMP, P.E., P.S., COUNTY ENGINEER
DATE: DECEMBER 23, 2014 MB

REVISED: August 19, 2022 JVINCENT