

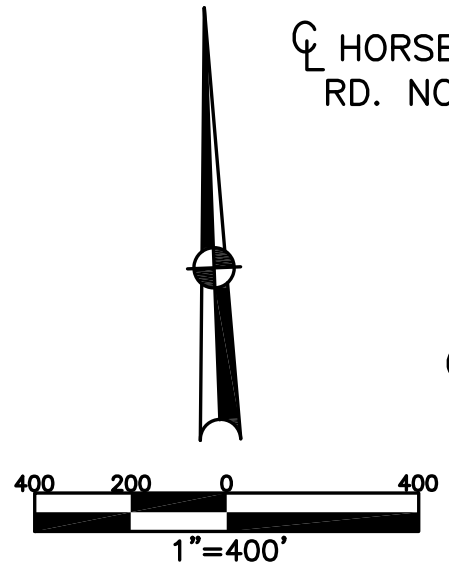
CONCORD TWP.

SECTION 1 TOWN 6 RANGE 5

PARCEL NUMBER
C06-00000

PLAT 2

MIAMI COUNTY, OHIO



☉ HORSE SHOE BEND
RD. NO 38 40' R/W

SEE UNION
TWP 2E

☉ STATE ROUTE 55
60' R/W

CONCORD TWP
SEC 36

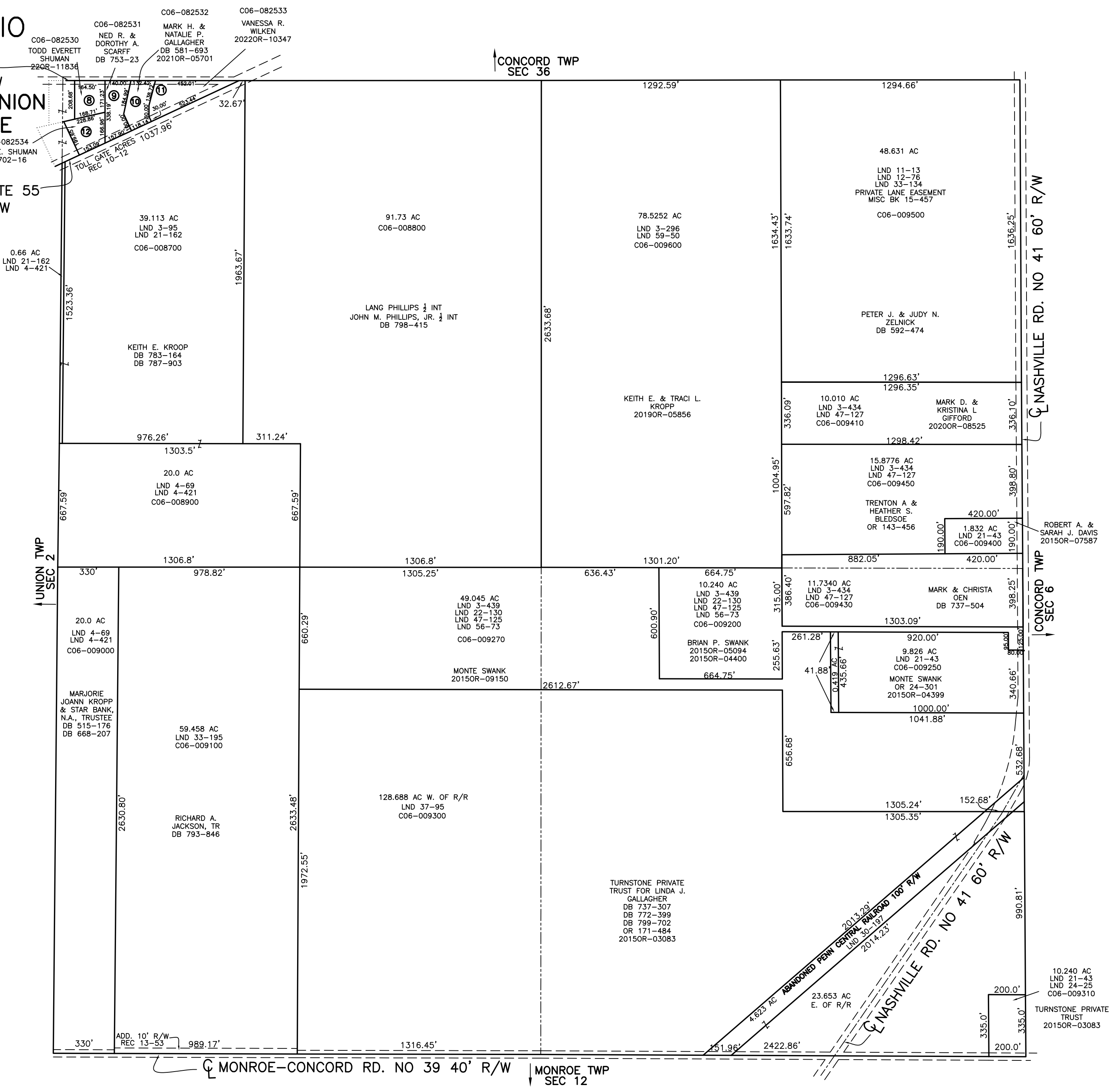
☉ NASHVILLE RD. NO 41 60' R/W

CONCORD TWP
SEC 6

ABBREVIATION LEGEND	
20140R-07759	= RECORDER'S DOCUMENT NUMBER
OR 257-619	= OFFICIAL RECORD 257 PAGE 619
D.B. 613-172	= DEED BOOK 613, PAGE 172
REC. 15-72	= RECORDER'S PLAT BOOK 15, PAGE 72
LND. 33-15	= LAND SURVEY VOLUME 33, PAGE 15
LOT 19-12	= LOT SURVEY VOLUME 19, PAGE 12
R.R. 8-29	= ROAD RECORD VOLUME 8, PAGE 29
R/W	= RIGHT OF WAY
☉	= CENTERLINE
AC.	= ACRES
TWP.	= TOWNSHIP
TR.	= TRACT
②	= LOT CREATED BY RECORDER'S PLAT

LINE LEGEND	
	Blow-up Boundary
	Property Line
	Lot Split Line
	Section Line
	Centerline
	Right-of-Way Line
	Corporation Line

SURVEY INDEX	
NORTHEAST QUARTER	
LND 3-296	
LND 3-434	
LND 11-13	
LND 12-76	
LND 21-43	
LND 33-134	
LND 47-127	
LND 59-50	
NORTHWEST QUARTER	
LND 3-95	REC 10-12
LND 4-69	
LND 4-421	
LND 21-162	
SOUTHEAST QUARTER	
LND 3-434	REC 14-35
LND 3-439	
LND 21-43	
LND 22-130	
LND 30-197	
LND 37-95	
LND 47-125	
LND 47-127	
LND 56-73	
SOUTHWEST QUARTER	
LND 3-439	REC 13-53
LND 4-69	
LND 4-421	
LND 22-130	
LND 24-25	
LND 31-38	
LND 33-195	
LND 37-95	
LND 56-120	



PREPARED BY: MIAMI COUNTY ENGINEER'S MAP DEPARTMENT
PAUL P. HUELSKAMP, P.E., P.S., COUNTY ENGINEER
DATE: NOVEMBER 25, 2020 SS
REVISED: July 8, 2022 JZWEZ