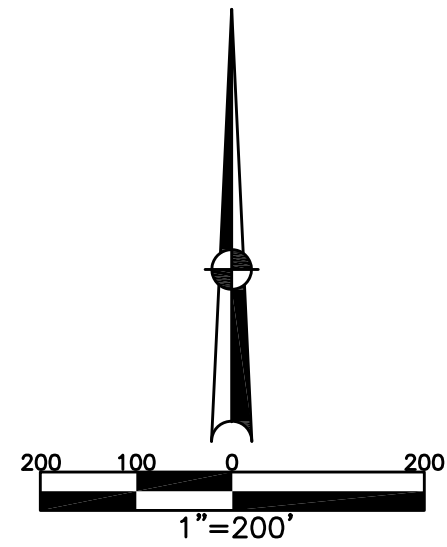


CONCORD TOWNSHIP
MIAMI COUNTY, OHIO

SECTION 33 TOWN 5 RANGE 6
NORTHWEST QUARTER

PARCEL NUMBER
C06-_____

PLAT 33-E



ABBREVIATION LEGEND		
20140R-07759	=	RECORDER'S DOCUMENT NUMBER
OR 130-197	=	OFFICIAL RECORD 130 PAGE 197
D.B. 613-172	=	DEED BOOK 613, PAGE 172
REC. 15-72	=	RECORDER'S PLAT BOOK 15, PAGE 72
LND. 33-15	=	LAND SURVEY VOLUME 33, PAGE 15
LOT 19-12	=	LOT SURVEY VOLUME 19, PAGE 12
R.R. 8-29	=	ROAD RECORD VOLUME 8, PAGE 29
R/W	=	RIGHT OF WAY
CL	=	CENTERLINE
AC.	=	ACRES
TWP.	=	TOWNSHIP
TR.	=	TRACT
②	=	LOT CREATED BY RECORDER'S PLAT

LINE LEGEND	
	Blow-up Boundary
	Property Line
	Lot Split Line
	Section Line
	Centerline
	Right-of-Way Line
	Corporation Line

SURVEY INDEX		
LND. 6-173	LND. 29-149	REC. 4-24
LND. 7-97	LND. 30-48	REC. 4-41
LND. 8-104	LND. 36-113	REC. 4-48
LND. 10-155	LND. 41-60	REC. 4-49
LND. 14-61	LND. 42-183	REC. 6-52
LND. 14-192	LND. 42-191	REC. 8-74
LND. 18-43	LND. 56-112	REC. 17-35
LND. 19-161	LND. 57-27	REC. 17-77
LND. 20-88		REC. 17-92
LND. 21-106		REC. 19-104
LND. 21-163		REC. 19-142
LND. 27-44		REC. 19-142
LND. 27-116		REC. 25-74
LND. 27-166		REC. 28-52
LND. 35-160		
	LOT 10-50	
	LOT 10-191	
	LOT 17-193	

THOMAS L. KINDELL, 1/4 INT.
LARRY L. KINDELL, 1/4 INT.
LESLIE M. KINDELL, 1/4 INT.
TINA M. DEAN, 1/4 INT.
20230R-00845

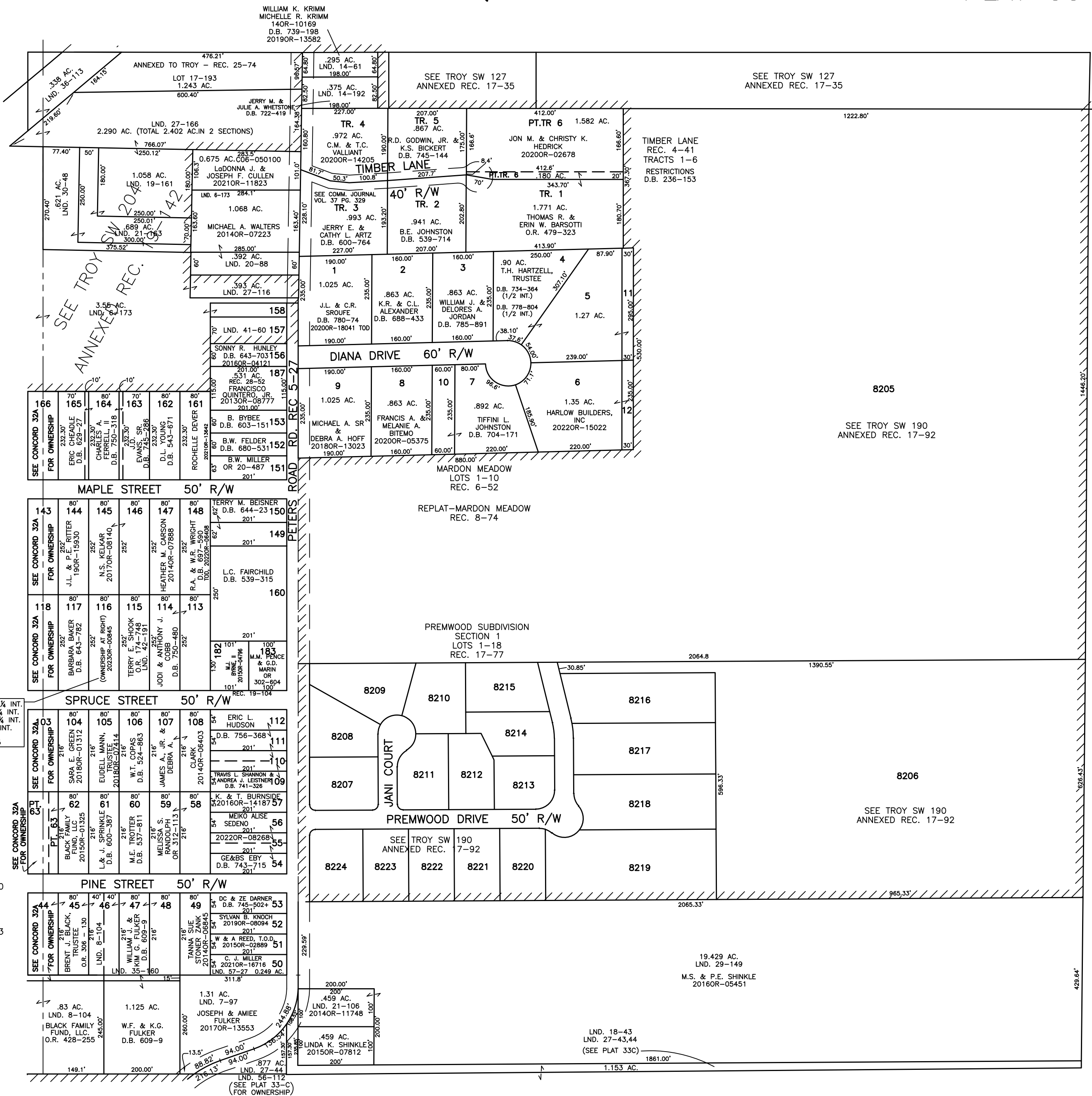
HOME ACRES PLAT
REC. 4-24
LOTS 1 THRU 150

HOME ACRES PLAT
REC. 4-48
LOTS 151 THRU 160

HOME ACRES PLAT
REC. 4-49
LOTS 161 THRU 173

HOME ACRES PLAT
REC. 28-52
REPLAT LOT 187

PREPARED BY: MIAMI COUNTY ENGINEER'S MAP DEPARTMENT
PAUL P. HUELSKAMP, P.E., P.S., COUNTY ENGINEER
DATE: AUGUST 14, 1996
REVISED: January 31, 2023 APALMER



(SEE PLAT 33-C)
FOR OWNERSHIP