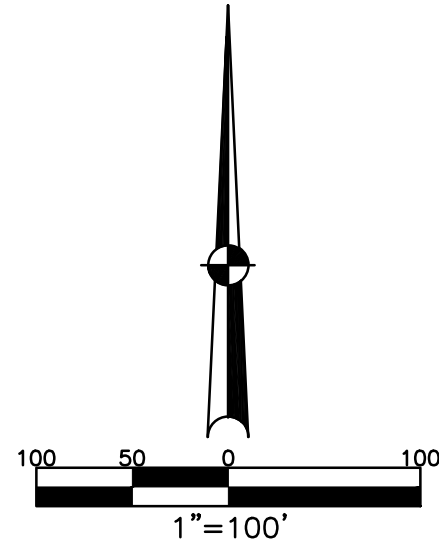


CONCORD TOWNSHIP
MIAMI COUNTY, OHIO

SECTION 32 TOWN 5 RANGE 6
PART SOUTHWEST QUARTER

SMDA NUMBER
C06-CC032E-_____

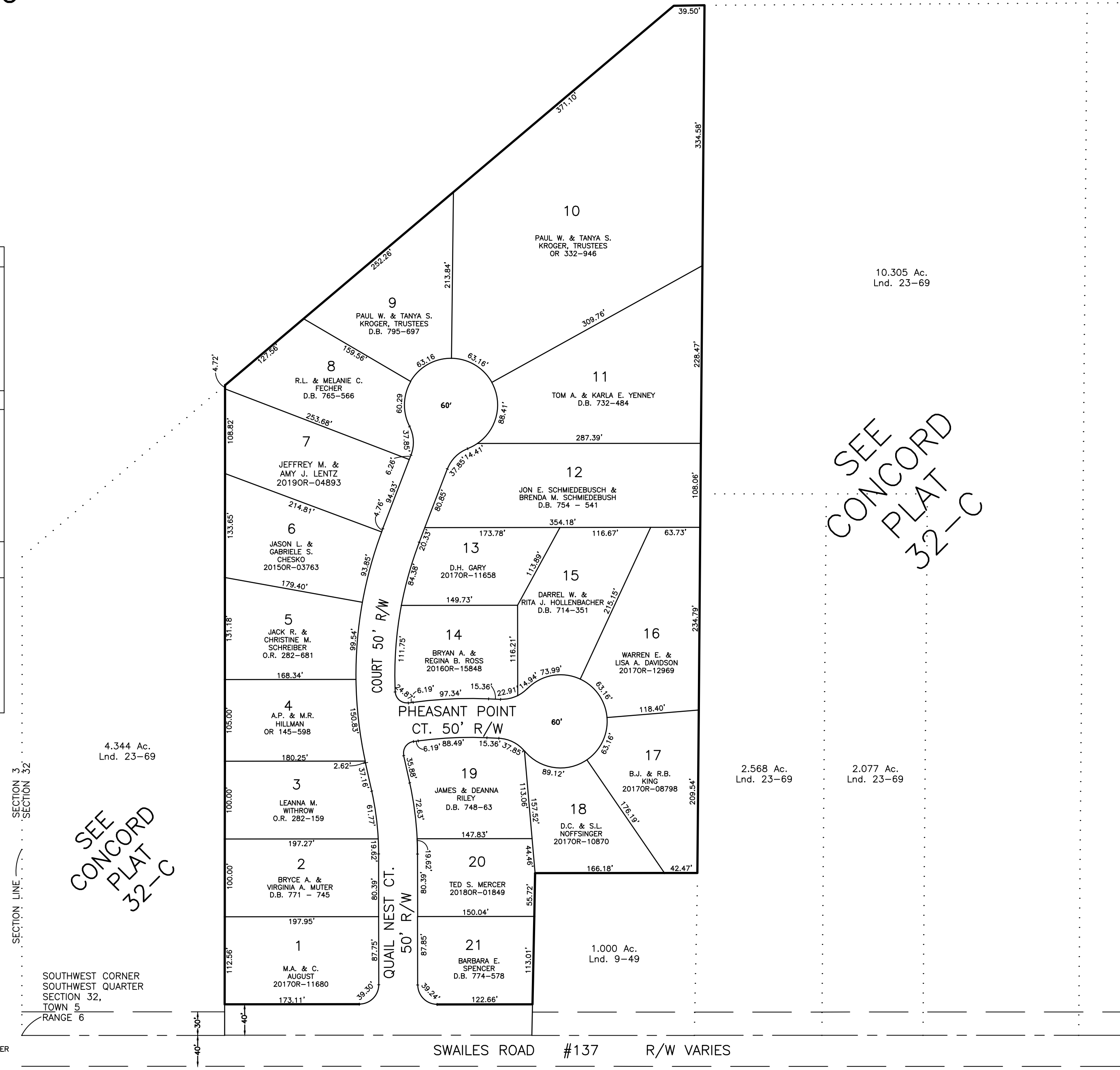
PLAT 32E



ABBREVIATION LEGEND	
OR 135-927	= OFFICIAL RECORD 135 PAGE 927
D.B. 613-172	= DEED BOOK 613, PAGE 172
REC. 15-72	= RECORDER'S PLAT BOOK 15, PAGE 72
LND. 33-15	= LAND SURVEY VOLUME 33, PAGE 15
LOT 19-12	= LOT SURVEY VOLUME 19, PAGE 12
R.R. 8-29	= ROAD RECORD VOLUME 8, PAGE 29
R/W	= RIGHT OF WAY
CL	= CENTERLINE
AC.	= ACRES
TWP.	= TOWNSHIP
TR.	= TRACT
Ⓢ	= LOT CREATED BY RECORDER'S PLAT

LINE LEGEND	
	Blow-up Boundary
	Property Line
	Lot Split Line
	Section Line
	Centerline
	Right-of-Way Line
	Corporation Line

SURVEY INDEX	
LND. 23-69	SWAILES RUN (LOTS 1-21) REC. 19-33, 33-A
LND. 45-5	
LND. 45-91	



PREPARED BY: MIAMI COUNTY ENGINEER'S MAP DEPARTMENT
PAUL P. HUELSKAMP, P.E., P.S., COUNTY ENGINEER
DATE: MARCH 8, 2001
REVISED: May 15, 2019 DSTUMPF