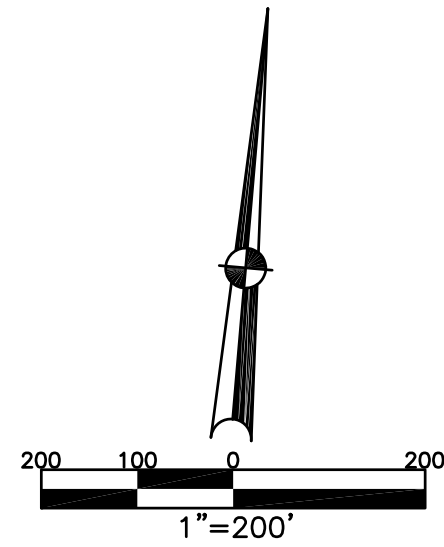


CONCORD TWP.
MIAMI COUNTY, OHIO

SECTION 32 TOWN 5 RANGE 6
SOUTHWEST QUARTER

PARCEL NUMBER
C06-_____

PLAT 32-C



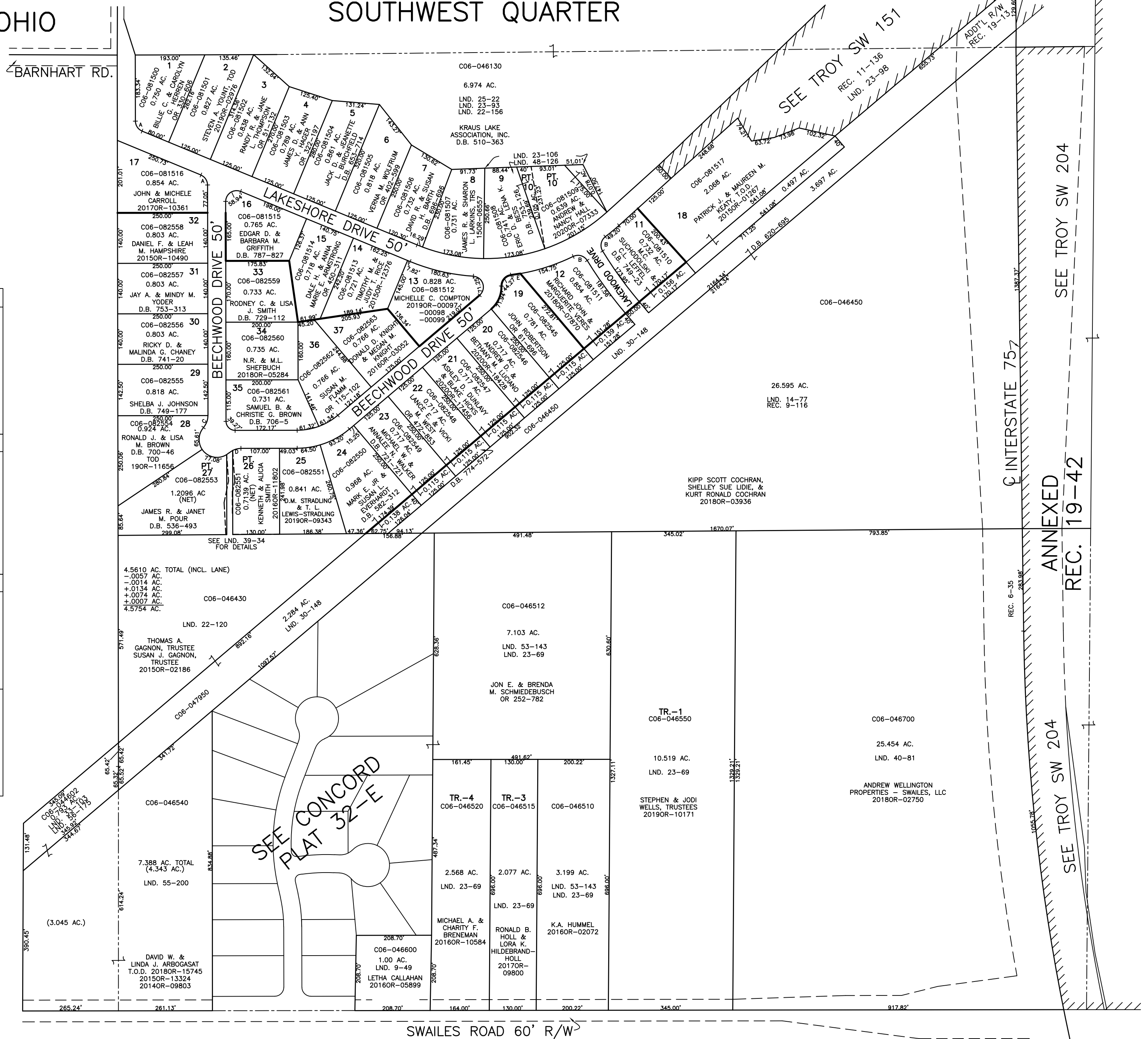
ABBREVIATION LEGEND		
2014OR-07759	=	RECORDER'S DOCUMENT NUMBER
OR 257-619	=	OFFICIAL RECORD 257 PAGE 619
D.B. 613-172	=	DEED BOOK 613, PAGE 172
REC. 15-72	=	RECORDER'S PLAT BOOK 15, PAGE 72
LND. 33-15	=	LAND SURVEY VOLUME 33, PAGE 15
LOT 19-12	=	LOT SURVEY VOLUME 19, PAGE 12
R.R. 8-29	=	ROAD RECORD VOLUME 8, PAGE 29
R/W	=	RIGHT OF WAY
CL	=	CENTERLINE
AC.	=	ACRES
TWP.	=	TOWNSHIP
TR.	=	TRACT
⊙	=	LOT CREATED BY RECORDER'S PLAT

LINE LEGEND	
	Blow-up Boundary
	Property Line
	Lot Split Line
	Section Line
	Centerline
	Right-of-Way Line
	Corporation Line

SURVEY INDEX		
LND. 9-49	LND. 23-106	LND. 55-200
LND. 10-140	LND. 25-22	
LND. 11-136	LND. 25-134	
LND. 19-13	LND. 30-148	REC. 6-56
LND. 19-33	LND. 39-34	REC. 8-43
LND. 19-142	LND. 39-93	REC. 9-116
LND. 22-120	LND. 40-81	REC. 9-125
LND. 22-156	LND. 45-5	
LND. 23-69	LND. 45-91	
LND. 23-98	LND. 48-126	

CONCORD ACRES	- SEC. 1	LOTS 1-17
		REC. 8-43
CONCORD ACRES	- SEC. 2	LOT 18
		REC. 9-125
CONCORD ACRES	- SEC. 3	LOTS 19-37
		REC. 10-140

ARC	LENGTH
A	35.30'
B	44.27'
C	36.14'
D	23.93'
E	26.44'



PREPARED BY: MIAMI COUNTY ENGINEER'S MAP DEPARTMENT
PAUL P. HUELSKAMP, P.E., P.S., COUNTY ENGINEER
DATE: JANUARY 12, 2015 MB
REVISED: December 9, 2020 CSHOUP