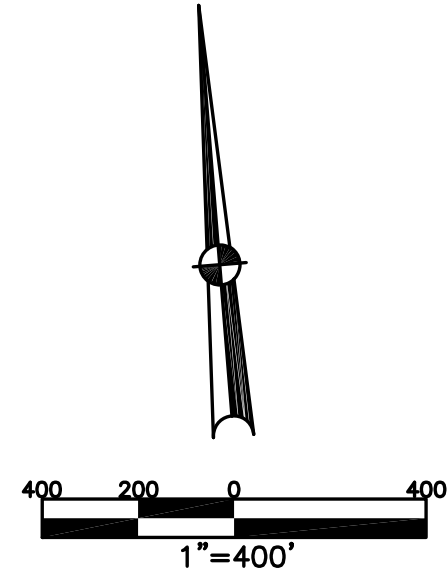


BROWN TOWNSHIP
MIAMI COUNTY, OHIO

SECTION 6 TOWN 2 RANGE 11

PARCEL NUMBER
B04-_____

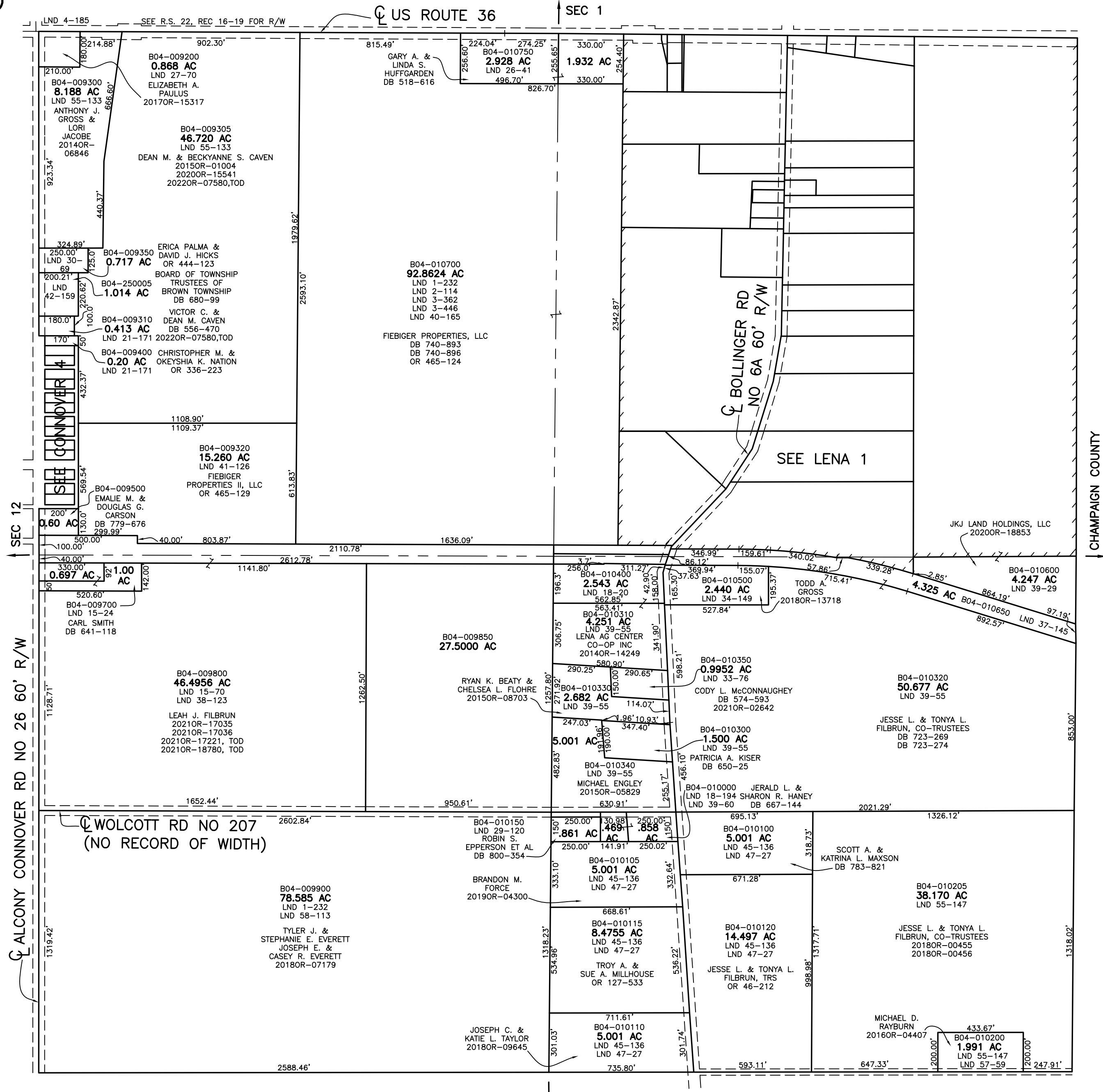
PLAT 5



ABBREVIATION LEGEND	
2014OR-07759	= RECORDER'S DOCUMENT NUMBER
OR 257-619	= OFFICIAL RECORD 257 PAGE 619
D.B. 613-172	= DEED BOOK 613, PAGE 172
REC. 15-72	= RECORDER'S PLAT BOOK 15, PAGE 72
LND. 33-15	= LAND SURVEY VOLUME 33, PAGE 15
LOT 19-12	= LOT SURVEY VOLUME 19, PAGE 12
R.R. 8-29	= ROAD RECORD VOLUME 8, PAGE 29
R/W	= RIGHT OF WAY
CL	= CENTERLINE
AC.	= ACRES
TWP.	= TOWNSHIP
TR.	= TRACT
②	= LOT CREATED BY RECORDER'S PLAT

LINE LEGEND	
	Blow-up Boundary
	Property Line
	Lot Split Line
	Section Line
	Centerline
	Right-of-Way Line
	Corporation Line

SURVEY INDEX	
NORTHEAST QUARTER	
LND 1-232	
LND 3-362	
LND 3-446	
LND 4-54	
LND 26-41	
LND 39-29	
LND 40-165	
LND 34-97	
SOUTHEAST QUARTER	
LND 1-232	LND 39-55
LND 18-20	LND 39-60
LND 18-41	LND 45-136
LND 18-94	LND 47-27
LND 33-76	LND 55-147
LND 34-97	LND 57-59
LND 39-29	
SOUTHWEST QUARTER	
LND 1-232	
LND 15-24	
LND 15-70	
LND 29-120	
LND 34-97	
LND 38-123	
LND 58-113	
NORTHWEST QUARTER	
LND 1-232	LND 40-165
LND 2-114	LND 41-126
LND 3-446	LND 42-159
LND 4-185	LND 55-133
LND 21-171	
LND 26-41	
LND 27-70	
LND 30-69	
LND 34-97	



PREPARED BY: MIAMI COUNTY ENGINEER'S MAP DEPARTMENT
PAUL P. HUELSKAMP, P.E., P.S., COUNTY ENGINEER
DATE: JULY 9, 2020 IMG
REVISED: May 13, 2022 MSTORMS