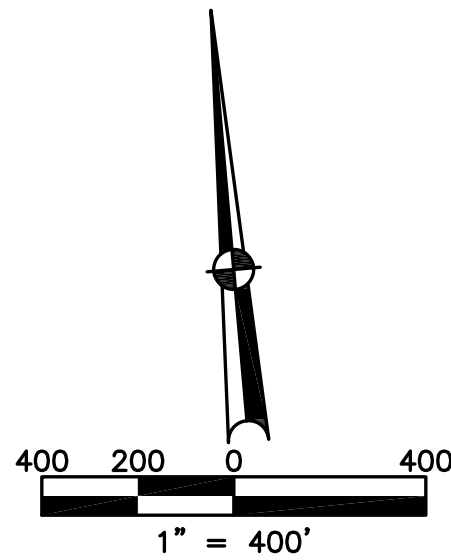


BROWN TOWNSHIP
MIAMI COUNTY, OHIO

SECTION 33 TOWN 2 RANGE 12

PARCEL NUMBER
B04-_____

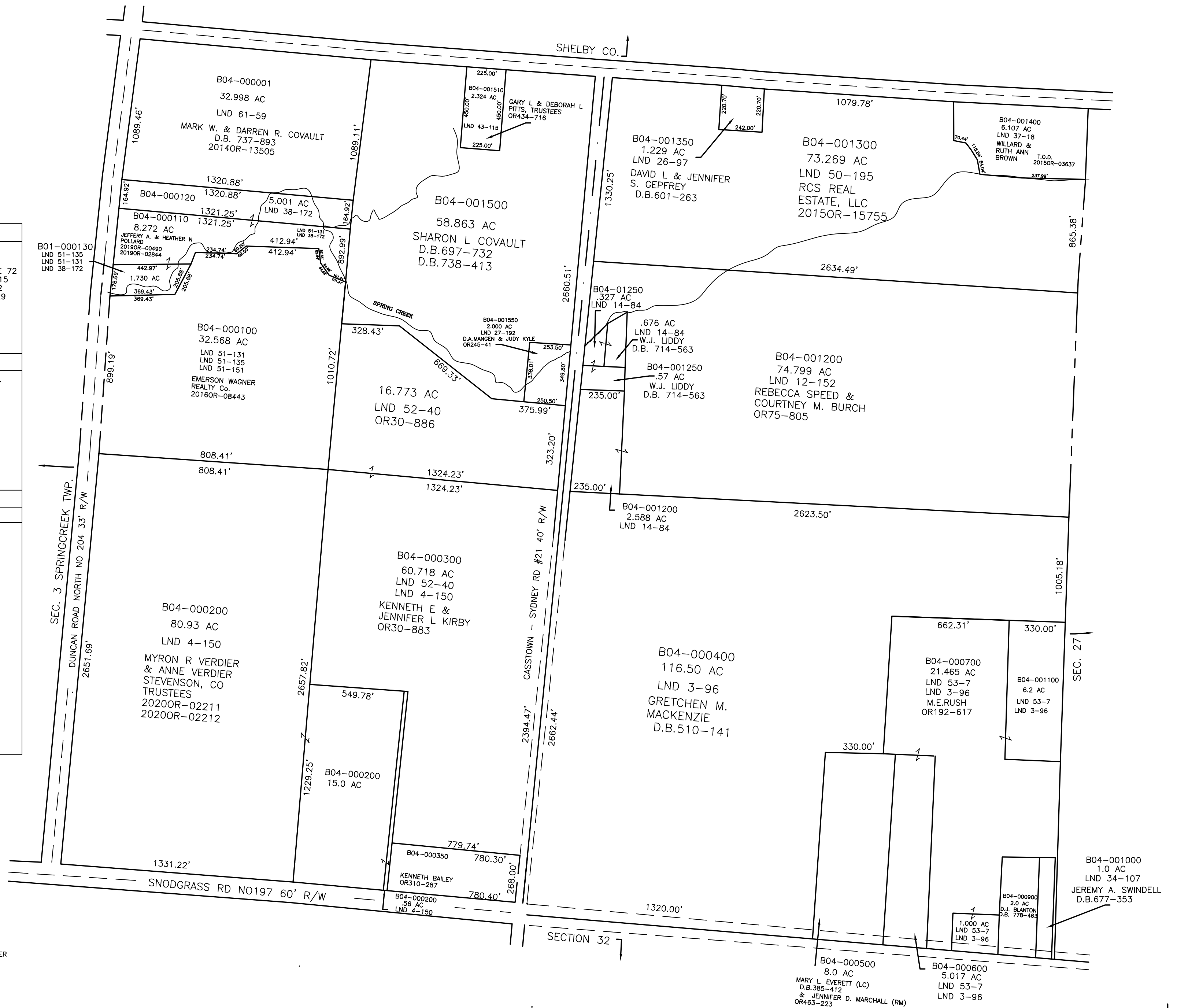
PLAT 28



ABBREVIATION LEGEND		
2014OR-00759	=	RECORDER'S DOCUMENT NUMBER
OR 406-509	=	OFFICIAL RECORD 406 PAGE 509
D.B. 613-172	=	DEED BOOK 613, PAGE 172
REC. 15-72	=	RECORDER'S PLAT BOOK 15, PAGE 72
LND. 33-15	=	LAND SURVEY VOLUME 33, PAGE 15
LOT 19-12	=	LOT SURVEY VOLUME 19, PAGE 12
R.R. 8-29	=	ROAD RECORD VOLUME 8, PAGE 29
R/W	=	RIGHT OF WAY
C	=	CENTERLINE
AC.	=	ACRES
TWP.	=	TOWNSHIP
TR.	=	TRACT
IL	=	INLOT

LINE LEGEND		
	=	Blow-up Boundary
	=	Property Line
	=	Lot Split Line
	=	Section Line
	=	Centerline
	=	Right-of-Way Line
	=	Corporation Line

SURVEY INDEX		
LND	LOT	REC
LND 3-96		
LND 4-150		
LND 12-152		
LND 14-84		
LND 25-54		
LND 26-97		
LND 27-192		
LND 34-109		
LND 37-18		
LND 38-172		
LND 43-115		
LND 50-195		
LND 51-131		
LND 51-135		
LND 51-151		
LND 52-40		
LND 53-7		



PREPARED BY: MIAMI COUNTY ENGINEER'S MAP DEPARTMENT
PAUL P. HUELSKAMP, P.E., P.S., COUNTY ENGINEER

DATE: May, 17, 2022 KATIE CONNORS
REVISED: May, 20, 2022 KCONNORS

B04-000500
8.0 AC
MARY L. EVERETT (LC)
D.B. 385-412
& JENNIFER D. MARCHALL (RM)
OR463-223

B04-000600
5.017 AC
LND 53-7
LND 3-96

B04-001000
1.0 AC
LND 34-107
JEREMY A. SWINDELL
D.B. 677-353