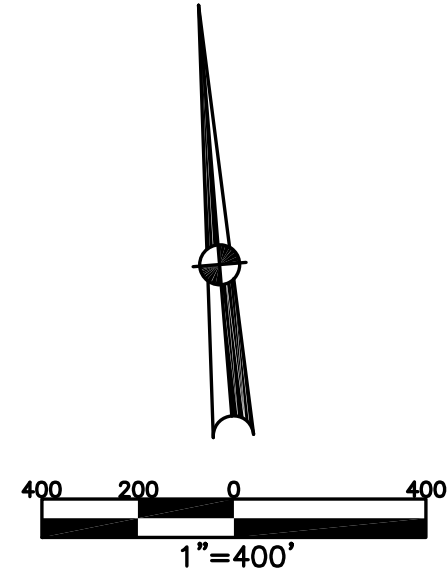


BROWN TOWNSHIP  
MIAMI COUNTY, OHIO

SECTION 30 TOWN 2 RANGE 11

PARCEL NUMBER  
B04-\_\_\_\_\_

PLAT 25



ABBREVIATION LEGEND	
2014OR-07759	= RECORDER'S DOCUMENT NUMBER
OR 257-619	= OFFICIAL RECORD 257 PAGE 619
D.B. 613-172	= DEED BOOK 613, PAGE 172
REC. 15-72	= RECORDER'S PLAT BOOK 15, PAGE 72
LND. 33-15	= LAND SURVEY VOLUME 33, PAGE 15
LOT 19-12	= LOT SURVEY VOLUME 19, PAGE 12
R.R. 8-29	= ROAD RECORD VOLUME 8, PAGE 29
R/W	= RIGHT OF WAY
CL	= CENTERLINE
AC.	= ACRES
TWP.	= TOWNSHIP
TR.	= TRACT
②	= LOT CREATED BY RECORDER'S PLAT

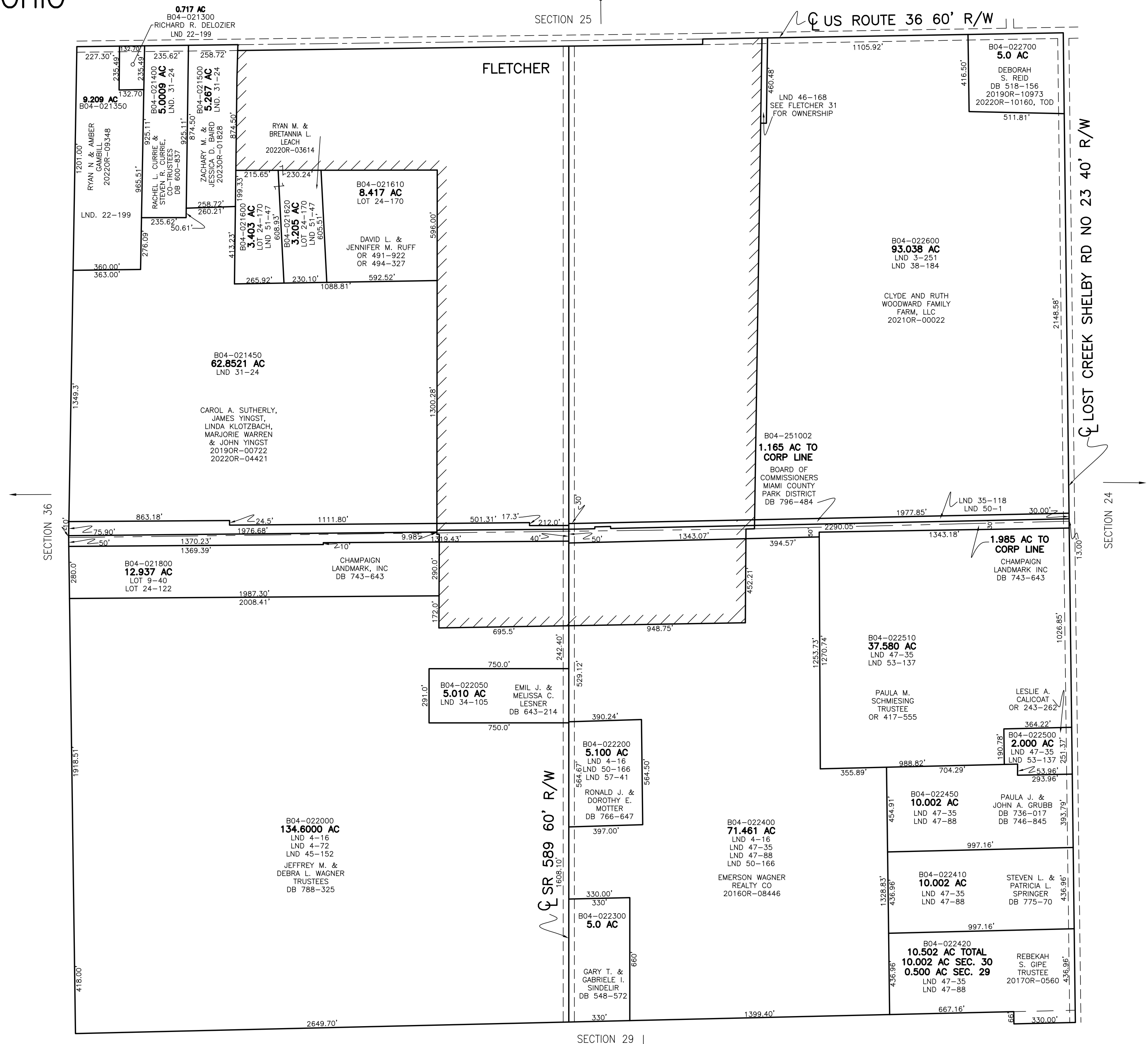
  

LINE LEGEND	
	Blow-up Boundary
	Property Line
	Lot Split Line
	Section Line
	Centerline
	Right-of-Way Line
	Corporation Line

SURVEY INDEX	
NORTHEAST QUARTER	
LND 3-251	
LND 35-118	
LND 38-184	
LND 46-168	
LND 50-1	
SOUTHEAST QUARTER	
LND 4-16	
LND 12-117	
LND 35-118	
LND 47-35	
LND 47-88	
LND 50-166	
LND 53-137	
LND 57-41	
SOUTHWEST QUARTER	
LND 4-16	LOT 24-122
LND 4-72	
LND 9-40	
LND 34-105	
LND 45-122	
NORTHWEST QUARTER	
LND 22-198	
LND 22-199	
LND 31-24	

PREPARED BY: MIAMI COUNTY ENGINEER'S MAP DEPARTMENT  
PAUL P. HUELSKAMP, P.E., P.S., COUNTY ENGINEER  
DATE: FEBRUARY 17, 2021 IMG  
REVISED: April 11, 2023 DJACQUEMIN



SECTION 29