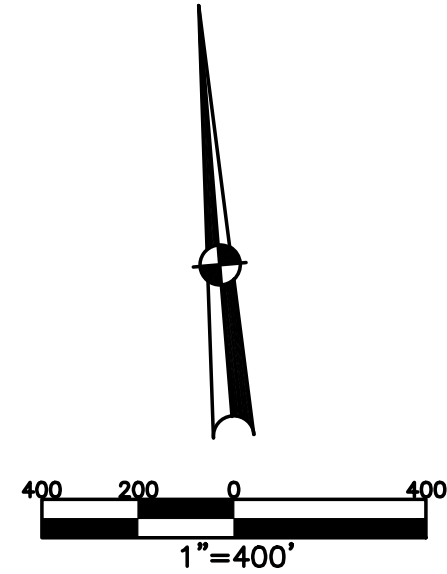


BROWN TOWNSHIP
MIAMI COUNTY, OHIO

SECTION 29 TOWN 2 RANGE 11

PARCEL NUMBER
B04-_____

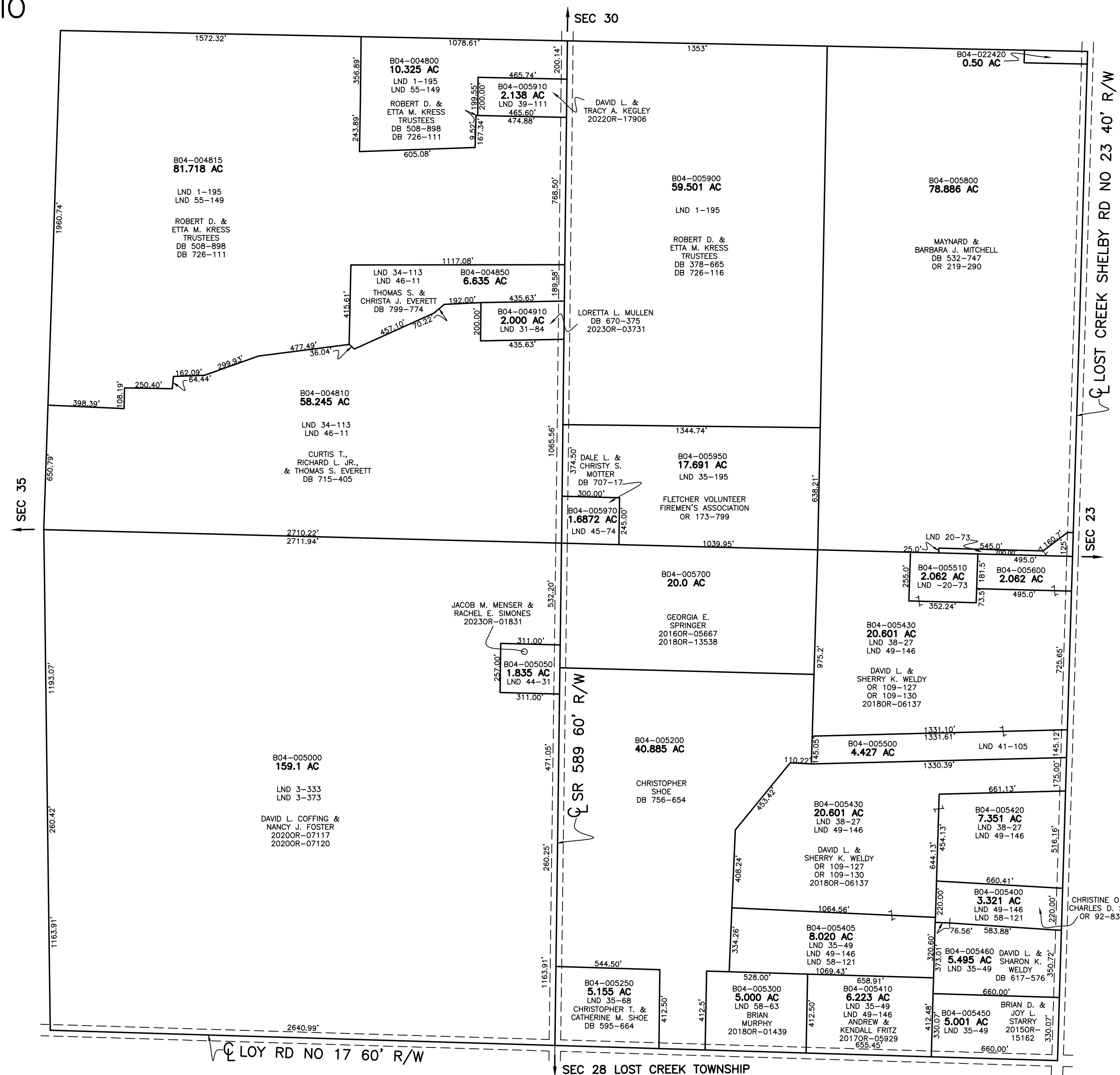
PLAT 24



ABBREVIATION LEGEND	
2014OR-07759	= RECORDER'S DOCUMENT NUMBER
OR 257-619	= OFFICIAL RECORD 257 PAGE 619
D.B. 613-172	= DEED BOOK 613, PAGE 172
REC. 15-72	= RECORDER'S PLAT BOOK 15, PAGE 72
LND. 33-15	= LAND SURVEY VOLUME 33, PAGE 15
LOT 19-12	= LOT SURVEY VOLUME 19, PAGE 12
R.R. 8-29	= ROAD RECORD VOLUME 8, PAGE 29
R/W	= RIGHT OF WAY
CL	= CENTERLINE
AC.	= ACRES
TWP.	= TOWNSHIP
TR.	= TRACT
②	= LOT CREATED BY RECORDER'S PLAT

LINE LEGEND	
	Blow-up Boundary
	Property Line
	Lot Split Line
	Section Line
	Centerline
	Right-of-Way Line
	Corporation Line

SURVEY INDEX	
NORTHEAST QUARTER	
LND 1-195	
LND 20-73	
LND 31-84	
LND 35-175	
LND 45-174	
SOUTHEAST QUARTER	
LND 1-195	LND 58-121
LND 17-161	
LND 20-73	
LND 35-49	
LND 38-27	
LND 41-105	
LND 49-146	
LND 58-163	
SOUTHWEST QUARTER	
LND 1-195	
LND 3-333	
LND 3-373	
LND 44-31	
NORTHWEST QUARTER	
LND 1-195	
LND 31-84	
LND 34-113	
LND 39-111	
LND 46-11	



PREPARED BY: MIAMI COUNTY ENGINEER'S MAP DEPARTMENT
PAUL P. HUELSKAMP, P.E., P.S., COUNTY ENGINEER
DATE: FEBRUARY 17, 2021 IMG
REVISED: April 17, 2023 APALMER

SEC 28 LOST CREEK TOWNSHIP