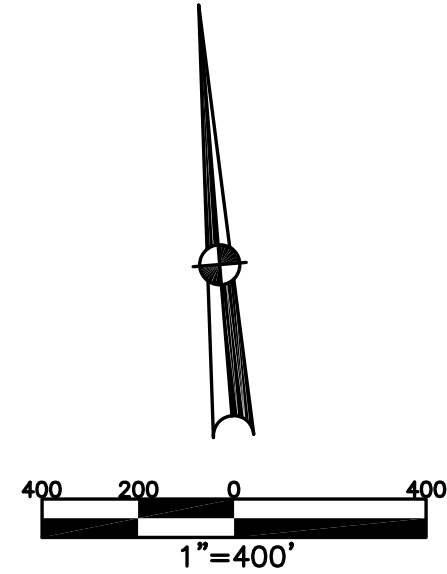


BROWN TOWNSHIP
MIAMI COUNTY, OHIO

SECTION 27 TOWN 2 RANGE 12

PARCEL NUMBER
B04-_____

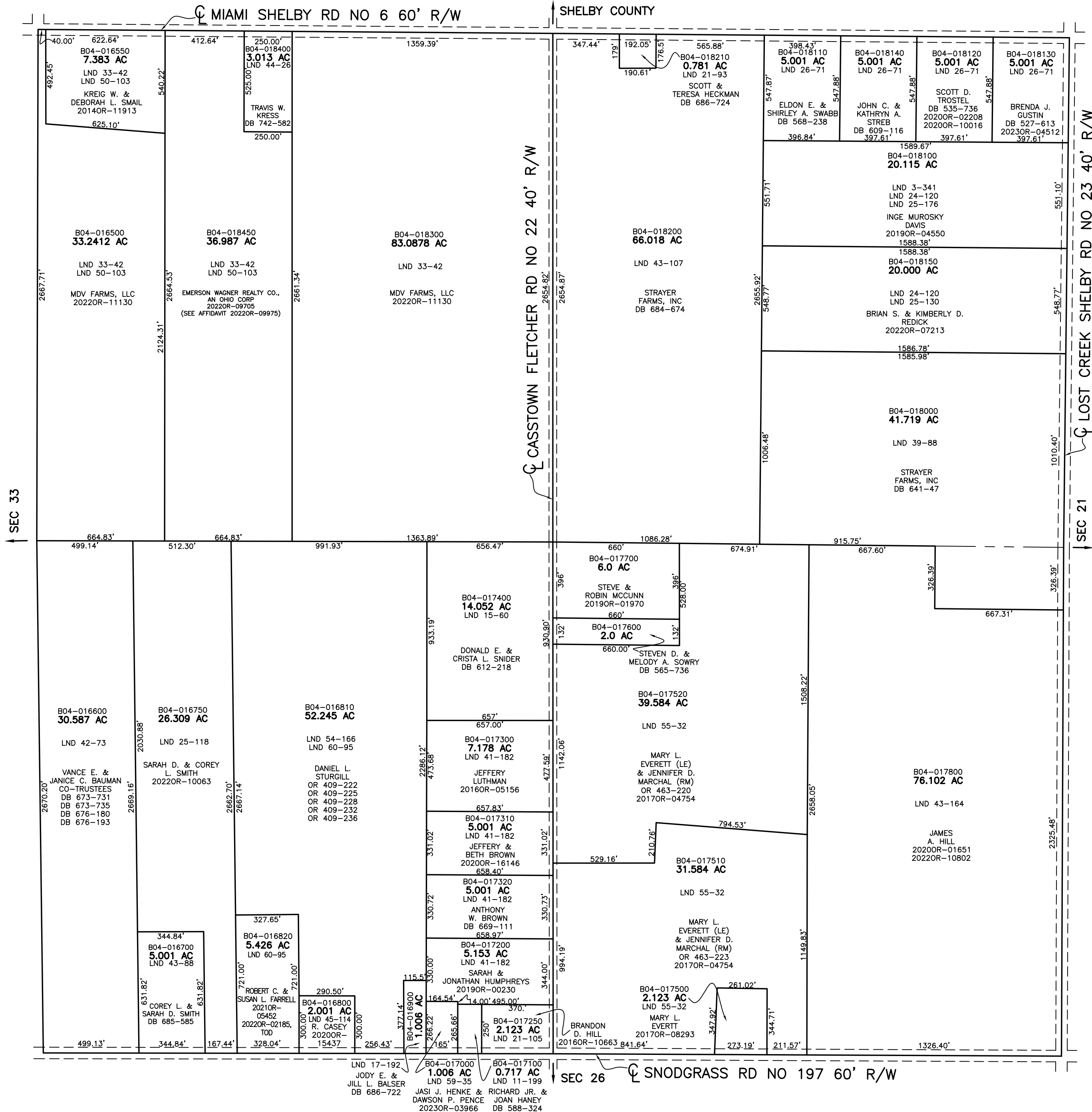
PLAT 23



ABBREVIATION LEGEND	
20140R-07759	= RECORDER'S DOCUMENT NUMBER OR 257-619 = OFFICIAL RECORD 257 PAGE 619
D.B. 613-172	= DEED BOOK 613, PAGE 172
REC. 15-72	= RECORDER'S PLAT BOOK 15, PAGE 72
LND. 33-15	= LAND SURVEY VOLUME 33, PAGE 15
LOT 19-12	= LOT SURVEY VOLUME 19, PAGE 12
R.R. 8-29	= ROAD RECORD VOLUME 8, PAGE 29
R/W	= RIGHT OF WAY
CL	= CENTERLINE
AC.	= ACRES
TWP.	= TOWNSHIP
TR.	= TRACT
②	= LOT CREATED BY RECORDER'S PLAT

LINE LEGEND	
—	Blow-up Boundary
—	Property Line
- - -	Lot Split Line
- - -	Section Line
- - -	Centerline
- - -	Right-of-Way Line
////	Corporation Line

SURVEY INDEX	
NORTHEAST QUARTER	
LND 3-341	
LND 21-93	
LND 24-120	
LND 25-133	
LND 25-176	
LND 26-71	
LND 39-88	
LND 43-107	
SOUTHEAST QUARTER	
LND 39-88	
LND 43-164	
LND 55-32	
SOUTHWEST QUARTER	
LND 11-199	LND 45-114
LND 15-60	LND 54-166
LND 17-192	LND 59-35
LND 21-105	LND 60-95
LND 25-118	
LND 41-182	
LND 42-73	
LND 43-88	
NORTHWEST QUARTER	
LND 33-42	
LND 44-26	
LND 50-103	



PREPARED BY: MIAMI COUNTY ENGINEER'S MAP DEPARTMENT
PAUL P. HUELSKAMP, P.E., P.S., COUNTY ENGINEER
DATE: FEBRUARY 17, 2021 IMG
REVISED: May 2, 2023 JBORGART