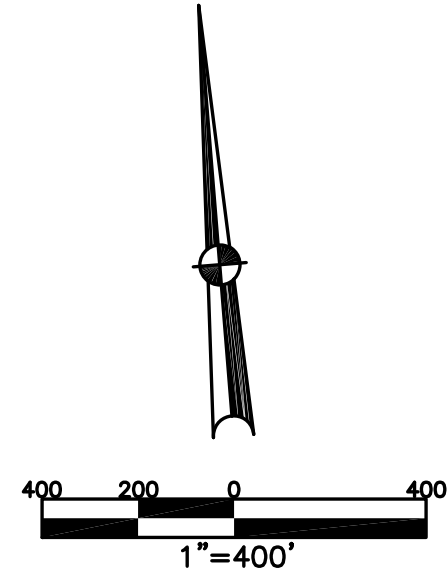


BROWN TOWNSHIP
MIAMI COUNTY, OHIO

SECTION 18 TOWN 2 RANGE 11

PARCEL NUMBER
B04-_____

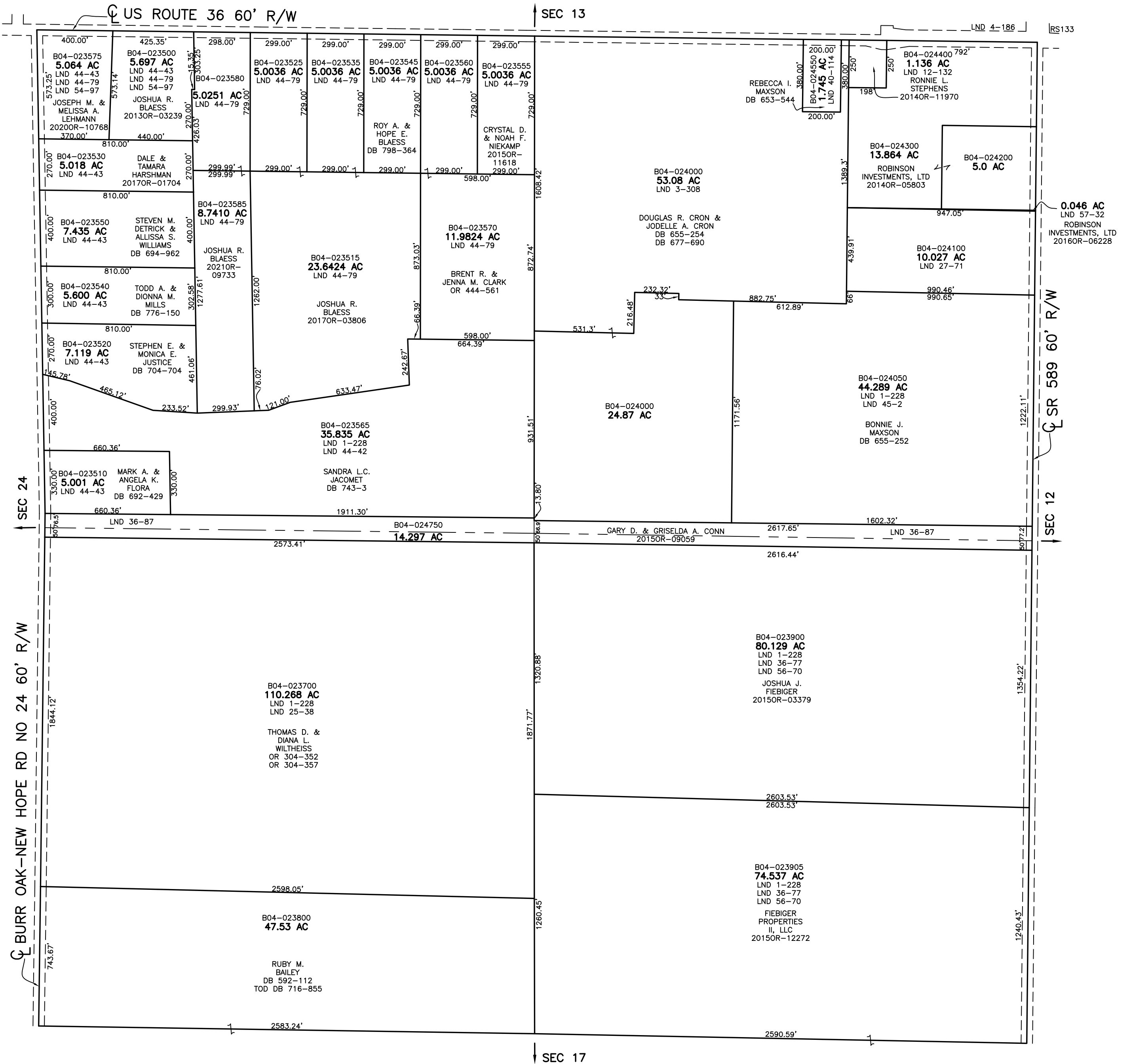
PLAT 15



ABBREVIATION LEGEND	
2014OR-07759	= RECORDER'S DOCUMENT NUMBER
OR 257-619	= OFFICIAL RECORD 257 PAGE 619
D.B. 613-172	= DEED BOOK 613, PAGE 172
REC. 15-72	= RECORDER'S PLAT BOOK 15, PAGE 72
LND. 33-15	= LAND SURVEY VOLUME 33, PAGE 15
LOT 19-12	= LOT SURVEY VOLUME 19, PAGE 12
R.R. 8-29	= ROAD RECORD VOLUME 8, PAGE 29
R/W	= RIGHT OF WAY
CL	= CENTERLINE
AC.	= ACRES
TWP.	= TOWNSHIP
TR.	= TRACT
②	= LOT CREATED BY RECORDER'S PLAT

LINE LEGEND	
	Blow-up Boundary
	Property Line
	Lot Split Line
	Section Line
	Centerline
	Right-of-Way Line
	Corporation Line

SURVEY INDEX	
NORTHEAST QUARTER	
LND 1-228	RS 133
LND 3-308	
LND 4-186	
LND 12-132	
LND 27-71	
LND 40-114	
LND 45-2	
LND 57-32	
SOUTHEAST QUARTER	
LND 1-228	
LND 36-77	
LND 56-70	
SOUTHWEST QUARTER	
LND 1-228	
LND 25-38	
NORTHWEST QUARTER	
LND 1-228	
LND 44-42	
LND 44-43	
LND 44-79	
LND 54-97	



PREPARED BY: MIAMI COUNTY ENGINEER'S MAP DEPARTMENT
PAUL P. HUELSKAMP, P.E., P.S., COUNTY ENGINEER
DATE: OCTOBER 8, 2020 IMG
REVISED: January 12, 2022 APALMER