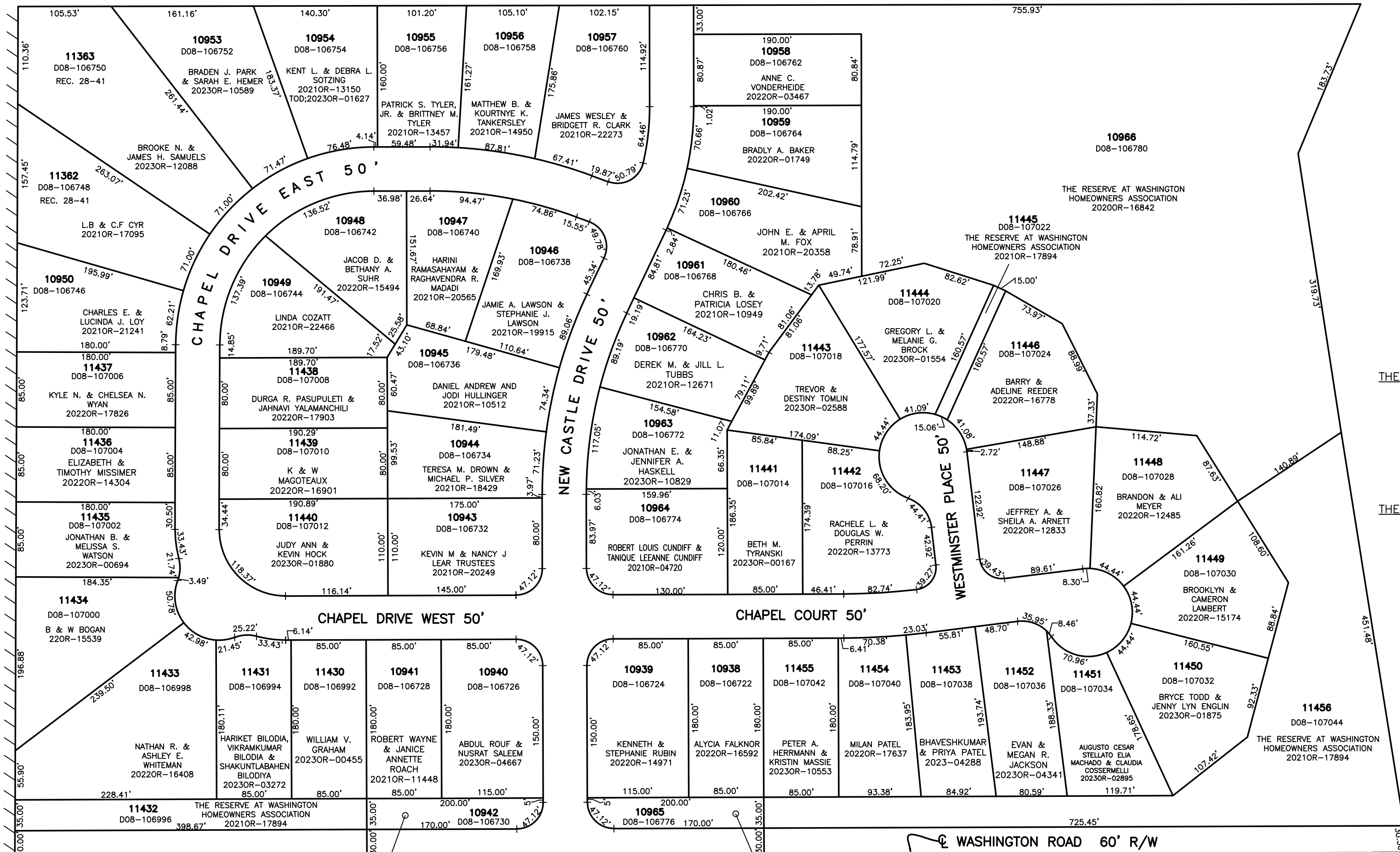


SECTION 13  
TOWN 7  
RANGE 5

CITY of TROY  
MIAMI COUNTY, OHIO

PARCEL NUMBER  
D08-\_\_\_\_\_

PLAT SW 214



ANNEXATION  
REC. 27-1

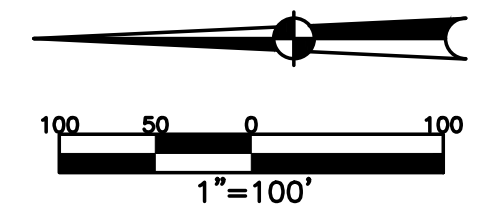
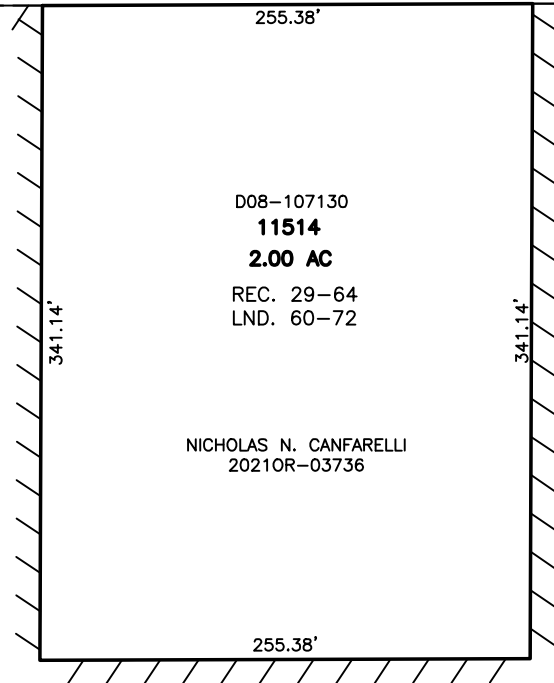
THE RESERVE AT WASHINGTON  
SECTION 1  
REC. 27-74  
LOTS 10938-10966

REPLAT REC. 28-41  
LOTS 11362-11363

THE RESERVE AT WASHINGTON  
SECTION 2  
REC. 29-22  
LOTS 11430-11456

ABBREVIATION LEGEND	
2014OR-07759	= RECORDER'S DOCUMENT NUMBER
OR 406-509	= OFFICIAL RECORD 406 PAGE 509
D.B. 613-172	= DEED BOOK 613, PAGE 172
REC. 15-72	= RECORDER'S PLAT BOOK 15, PAGE 72
LND. 33-15	= LAND SURVEY VOLUME 33, PAGE 15
LOT 19-12	= LOT SURVEY VOLUME 19, PAGE 12
R.R. 8-29	= ROAD RECORD VOLUME 8, PAGE 29
R/W	= RIGHT OF WAY
CL	= CENTERLINE
AC.	= ACRES
TWP.	= TOWNSHIP
TR.	= TRACT
IL	= INLOT

PREPARED BY: MIAMI COUNTY ENGINEER'S MAP DEPARTMENT  
PAUL P. HUELSKAMP, P.E., P.S., COUNTY ENGINEER  
DATE: JANUARY 31, 2019 MDB  
REVISED: November 2, 2023 APALMER



LINE LEGEND	SURVEY INDEX
	Blow-up Boundary
	Property Line
	Lot Split Line
	Section Line
	Centerline
	Right-of-Way Line
	Corporation Line

REC.	LND.
REC. 27-1	LND. 59-2
REC. 27-74	
REC. 28-41	
REC. 29-22	
REC. 29-64	