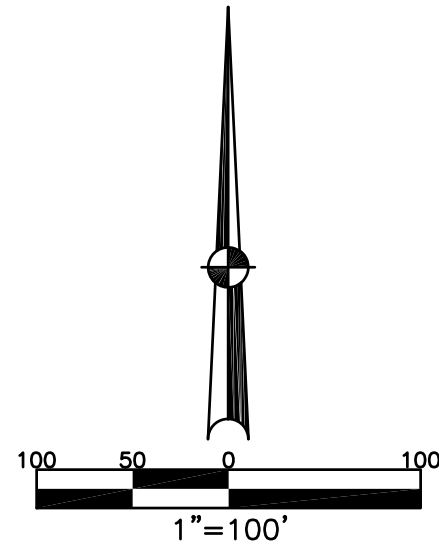


SECTION 33  
TOWN 5  
RANGE 6



CITY OF TROY  
MIAMI COUNTY, OHIO

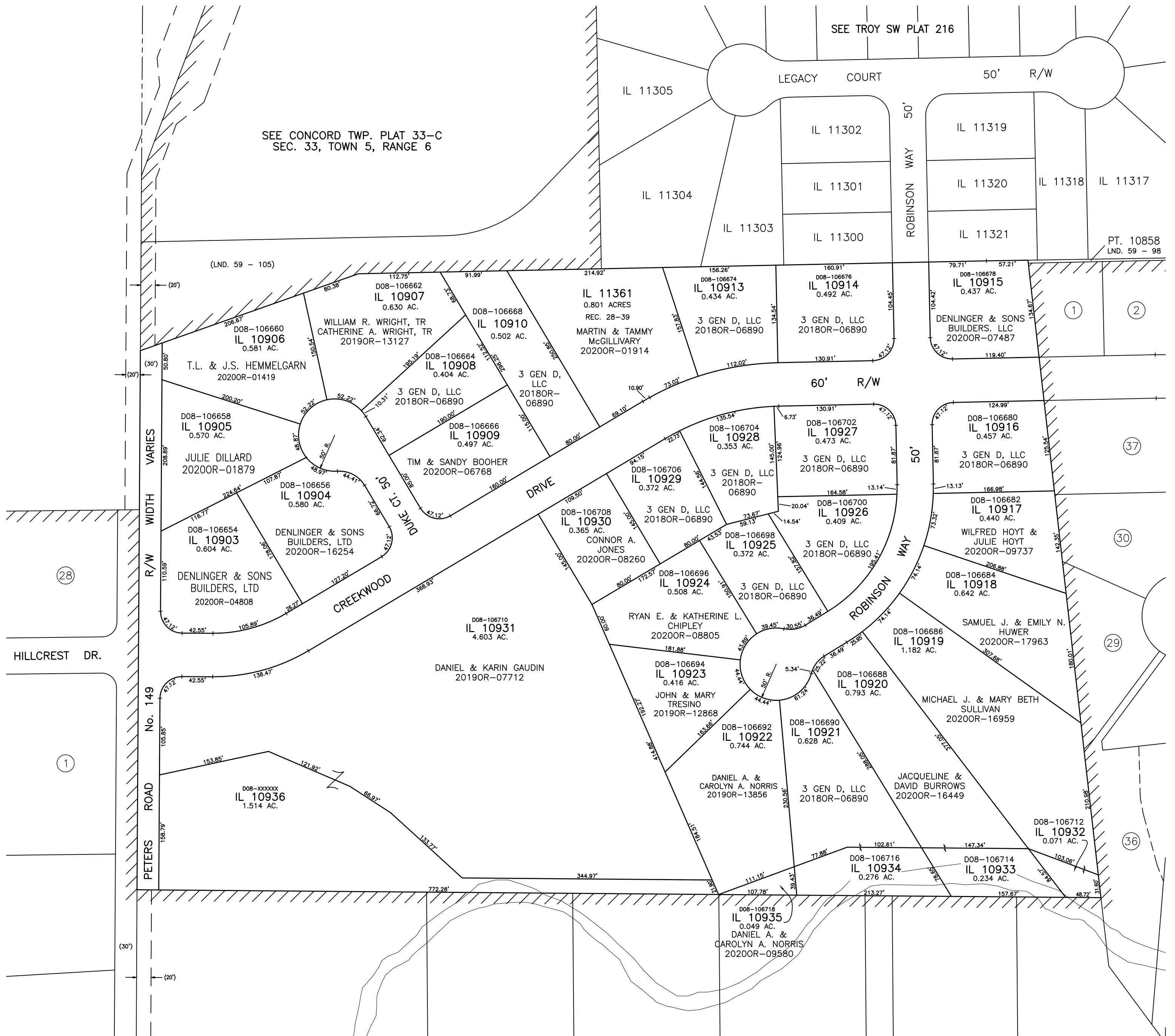
PARCEL NUMBER  
D08- PLAT SW 215

ABBREVIATION LEGEND	
20140R-07759	= RECORDER'S DOCUMENT NUMBER
OR 406-509	= OFFICIAL RECORD 406 PAGE 509
D.B. 677-326	= DEED BOOK 677, PAGE 326
REC. 18-87	= RECORDER'S PLAT BOOK 18, PAGE 87
LND. 56-145	= LAND SURVEY VOLUME 56, PAGE 145
LOT 24-200	= LOT SURVEY VOLUME 24, PAGE 200
R.R. 8-18	= ROAD RECORD VOLUME 8, PAGE 18
R/W	= RIGHT OF WAY
CL	= CENTERLINE
AC.	= ACRES
TWP.	= TOWNSHIP
TR.	= TRACT
Ⓚ	= LOT CREATED BY RECORDER'S PLAT

LINE LEGEND	
	Blow-up Boundary
	Property Line
	Lot Split Line
	Section Line
	Centerline
	Right-of-Way Line
	Corporation Line

SURVEY INDEX	
LND. 4-445	ANNEXATION: LOTS 9326-9342 REC. 19-142
LND. 26-119	
LND. 26-132	
LND. 27-44	
LND. 30-116	ANNEXATION: LOT 10858 REC. 27-50
	THE HERITAGE AT TROY COUNTRY CLUB LOTS 10903-10936 REC. 27-66
	LOT 11361 REC. 28-39



PREPARED BY: MIAMI COUNTY ENGINEER'S MAP DEPARTMENT  
PAUL P. HUELSKAMP, P.E., P.S., COUNTY ENGINEER  
DATE: JUNE 17, 2019 A.S.  
REVISED: December 2, 2020 SSHORT