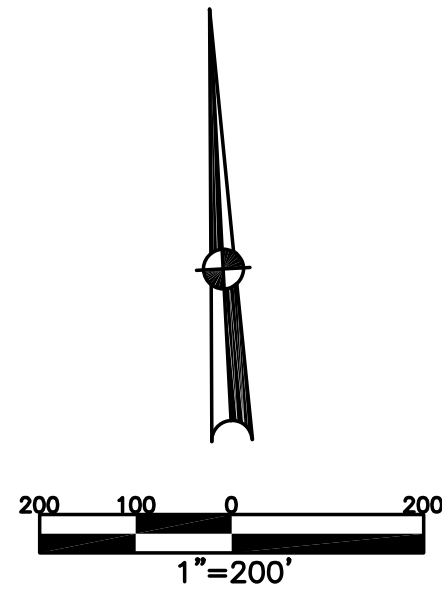


BETHEL TWP.  
MIAMI COUNTY, OHIO

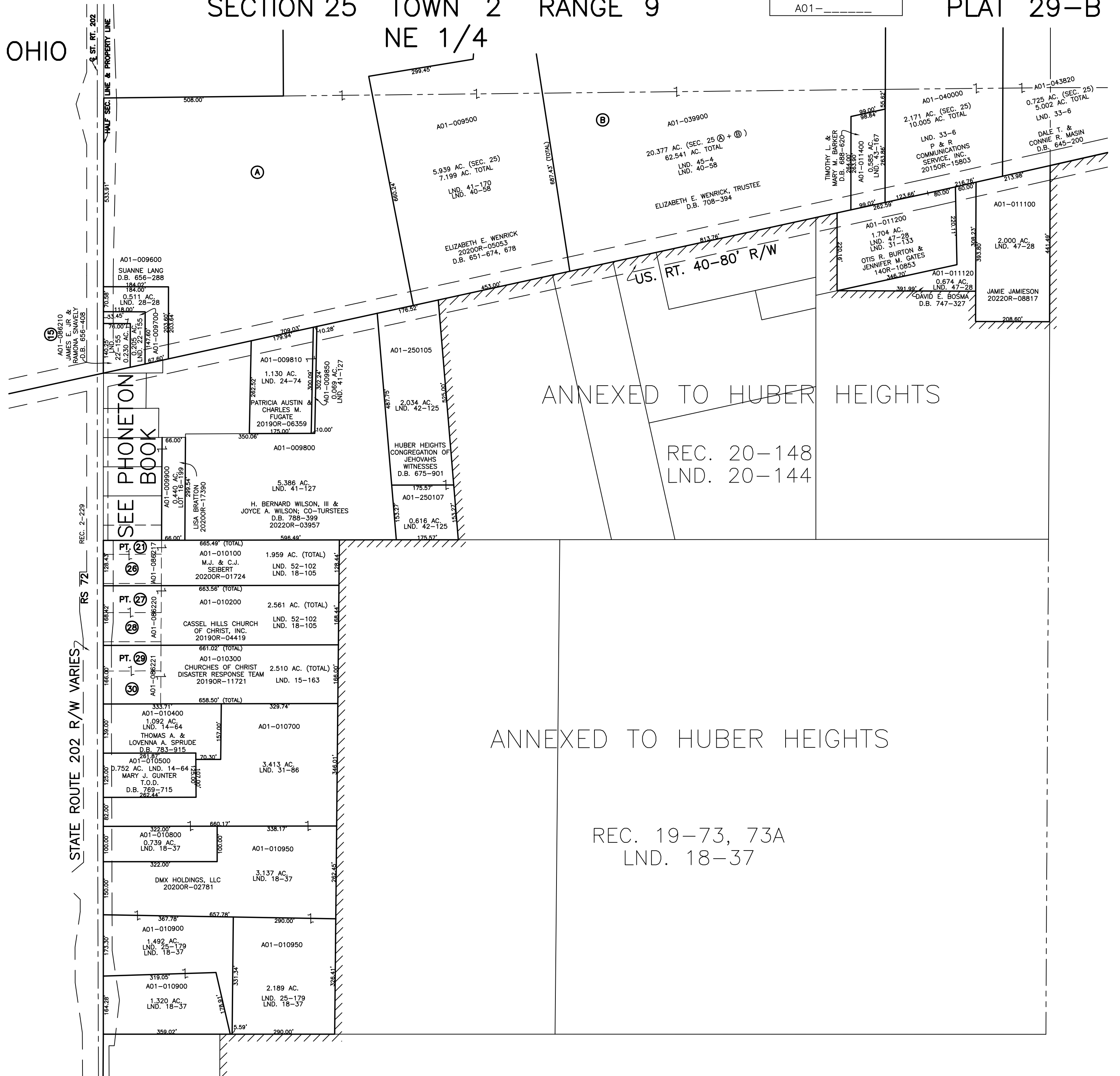
SECTION 25 TOWN 2 RANGE 9  
NE 1/4

PARCEL NUMBER  
A01-\_\_\_\_\_

PLAT 29-B



| ABBREVIATION LEGEND |             |                                  |
|---------------------|-------------|----------------------------------|
| 20140R-07759        | =           | RECORDER'S DOCUMENT NUMBER       |
| OR 257-619          | =           | OFFICIAL RECORD 257 PAGE 619     |
| D.B. 613-172        | =           | DEED BOOK 613, PAGE 172          |
| REC. 15-72          | =           | RECORDER'S PLAT BOOK 15, PAGE 72 |
| LND. 33-15          | =           | LAND SURVEY VOLUME 33, PAGE 15   |
| LOT 19-12           | =           | LOT SURVEY VOLUME 19, PAGE 12    |
| R.R. 8-29           | =           | ROAD RECORD VOLUME 8, PAGE 29    |
| R/W                 | =           | RIGHT OF WAY                     |
| C                   | =           | CENTERLINE                       |
| AC.                 | =           | ACRES                            |
| TWP.                | =           | TOWNSHIP                         |
| TR.                 | =           | TRACT                            |
| ⊙                   | =           | LOT CREATED BY RECORDER'S PLAT   |
| LINE LEGEND         |             |                                  |
|                     | =           | Blow-up Boundary                 |
|                     | =           | Property Line                    |
|                     | =           | Lot Split Line                   |
|                     | =           | Section Line                     |
|                     | =           | Centerline                       |
|                     | =           | Right-of-Way Line                |
|                     | =           | Corporation Line                 |
| SURVEY INDEX        |             |                                  |
| LND. 14-64          | LND. 40-58  | LOT 16-199                       |
| LND. 15-163         | LND. 41-127 | REC. 2-229                       |
| LND. 18-37          | LND. 41-170 | REC. 19-73                       |
| LND. 18-105         | LND. 42-125 | REC. 19-73A                      |
| LND. 20-144         | LND. 43-167 | REC. 20-148                      |
| LND. 22-155         | LND. 45-4   |                                  |
| LND. 24-74          | LND. 47-28  | RS 72                            |
| LND. 25-179         | LND. 52-102 |                                  |
| LND. 28-28          |             |                                  |
| LND. 31-86          |             |                                  |
| LND. 31-133         |             |                                  |
| LND. 33-6           |             |                                  |
| LND. 34-15          |             |                                  |



PREPARED BY: MIAMI COUNTY ENGINEER'S MAP DEPARTMENT  
PAUL P. HUELSKAMP, P.E., P.S., COUNTY ENGINEER  
DATE: AUGUST 25, 2015 MB  
REVISED: June 8, 2022 APALMER