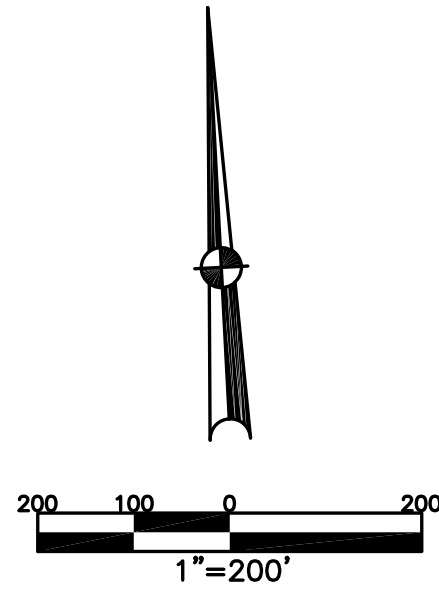


BETHEL TWP.
MIAMI COUNTY, OHIO

SECTION 25 TOWN 2 RANGE 9
NORTHWEST QUARTER

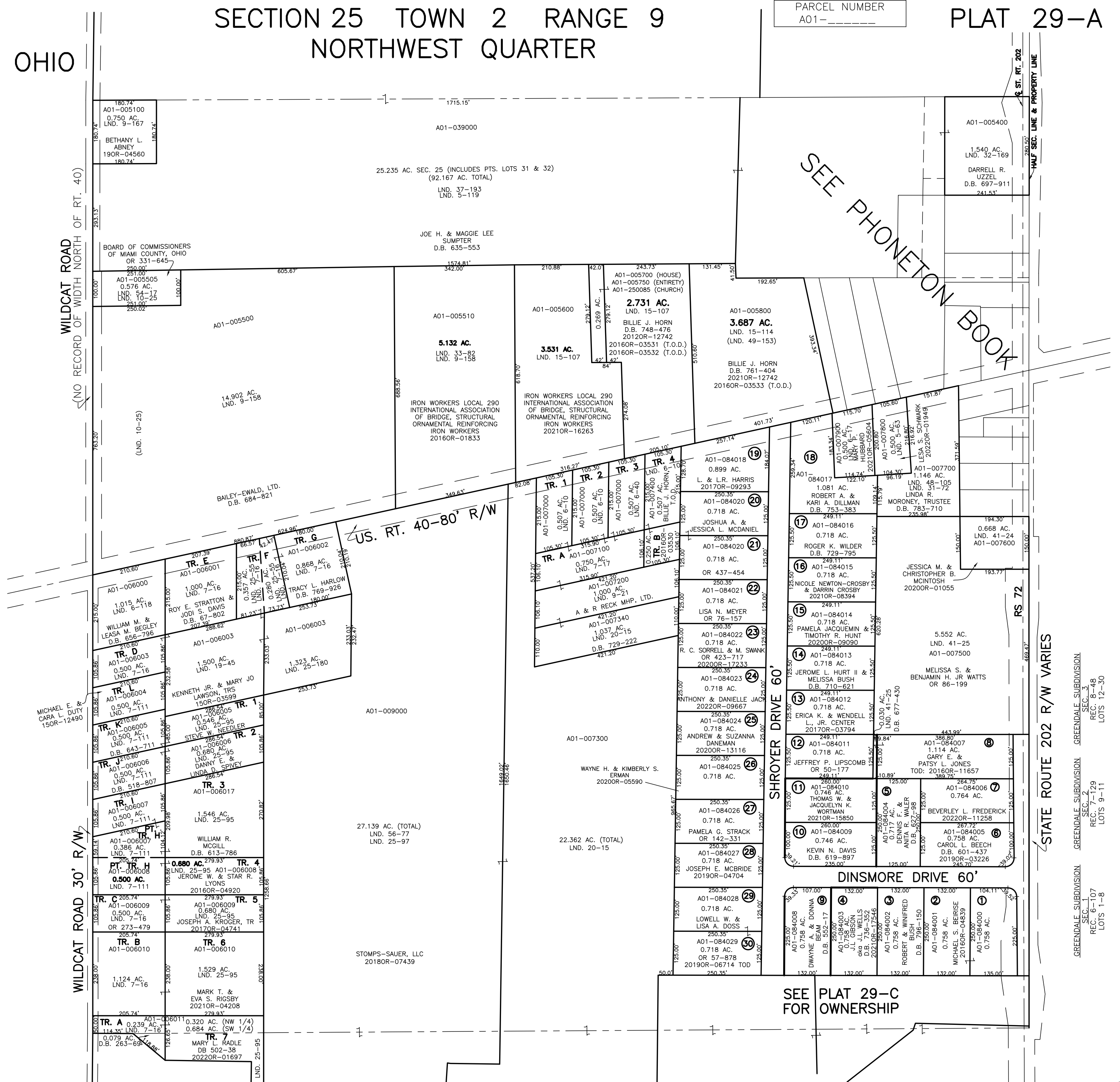
PARCEL NUMBER
A01-
PLAT 29-A



ABBREVIATION LEGEND		
20140R-07759	=	RECORDER'S DOCUMENT NUMBER OR 257-619 = OFFICIAL RECORD 257 PAGE 619
D.B. 613-172	=	DEED BOOK 613, PAGE 172
REC. 15-72	=	RECORDER'S PLAT BOOK 15, PAGE 72
LND. 33-15	=	LAND SURVEY VOLUME 33, PAGE 15
LOT 19-12	=	LOT SURVEY VOLUME 19, PAGE 12
R.R. 8-29	=	ROAD RECORD VOLUME 8, PAGE 29
R/W	=	RIGHT OF WAY
C	=	CENTERLINE
AC.	=	ACRES
TWP.	=	TOWNSHIP
TR.	=	TRACT
②	=	LOT CREATED BY RECORDER'S PLAT

LINE LEGEND		
	=	Blow-up Boundary
	=	Property Line
	=	Lot Split Line
	=	Section Line
	=	Centerline
	=	Right-of-Way Line
	=	Corporation Line

SURVEY INDEX		
LND. 4-249	LND. 19-48	REC. 6-107
LND. 4-405	LND. 20-15	REC. 7-129
LND. 4-410	LND. 25-55	REC. 8-48
LND. 5-63	LND. 25-95	
LND. 5-119	LND. 25-97	
LND. 6-10	LND. 25-180	
LND. 6-17	LND. 30-63	
LND. 6-118	LND. 31-72	
LND. 7-16	LND. 32-169	
LND. 7-17	LND. 33-82	
LND. 7-82	LND. 37-193	
LND. 7-111	LND. 36-12	
LND. 9-21	LND. 41-24	
LND. 9-158	LND. 41-25	
LND. 9-187	LND. 48-105	
LND. 10-25	LND. 49-153	
LND. 15-107	LND. 54-17	
LND. 15-114	LND. 56-77	
		REC. 6-107
		REC. 7-129
		REC. 8-48
		REC. 9-11



PREPARED BY: MIAMI COUNTY ENGINEER'S MAP DEPARTMENT
PAUL P. HUELSKAMP, P.E., P.S., COUNTY ENGINEER
DATE: AUGUST 24, 2015 MB
REVISED: July 26, 2022 JZWEZ

STATE ROUTE 202 R/W VARIES
GREENDALE SUBDIVISION SEC. 3 REC. 12-50 LOTS 12-50
GREENDALE SUBDIVISION SEC. 2 REC. 7-29 LOTS 9-11
GREENDALE SUBDIVISION SEC. 1 REC. 6-107 LOTS 1-8