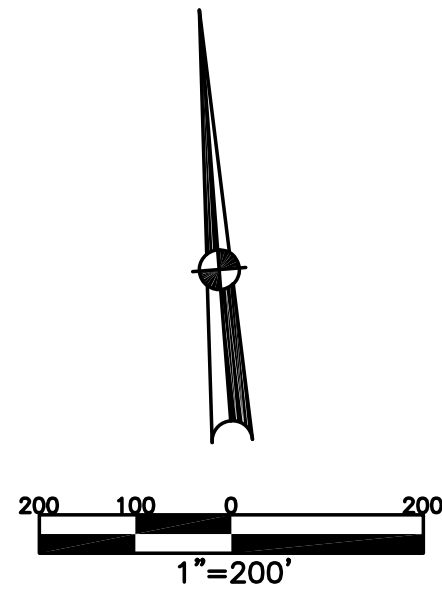


BETHEL TWP.
MIAMI COUNTY, OHIO

SECTION 23 TOWN 2 RANGE 9
NW 1/4

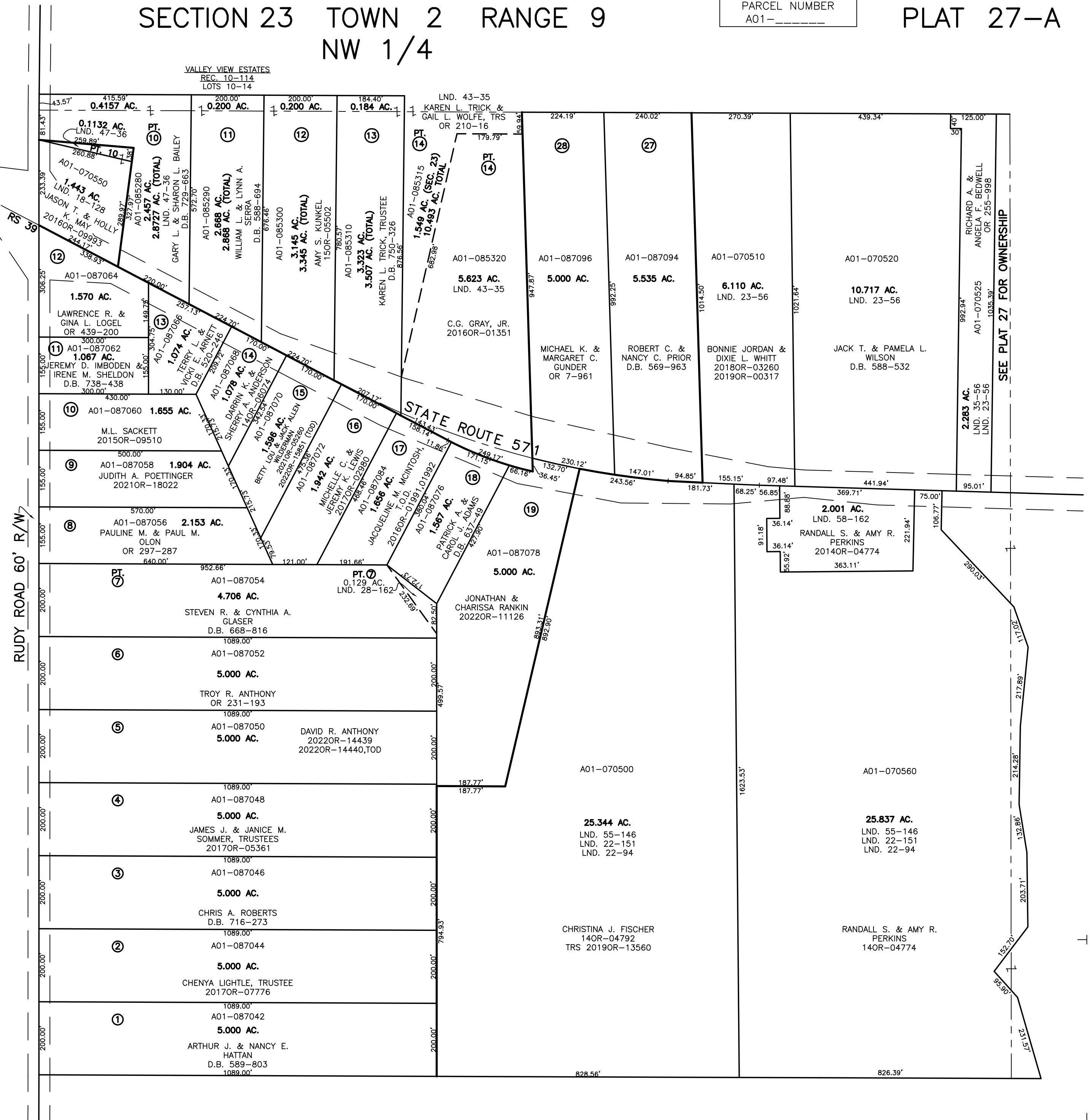
PARCEL NUMBER
A01-_____

PLAT 27-A



ABBREVIATION LEGEND		
2014OR-07759	=	RECORDER'S DOCUMENT NUMBER
OR 257-619	=	OFFICIAL RECORD 257 PAGE 619
D.B. 613-172	=	DEED BOOK 613, PAGE 172
REC. 15-72	=	RECORDER'S PLAT BOOK 15, PAGE 72
LND. 33-15	=	LAND SURVEY VOLUME 33, PAGE 15
LOT 19-12	=	LOT SURVEY VOLUME 19, PAGE 12
R.R. 8-29	=	ROAD RECORD VOLUME 8, PAGE 29
R/W	=	RIGHT OF WAY
CL	=	CENTERLINE
AC.	=	ACRES
TWP.	=	TOWNSHIP
TR.	=	TRACT
Ⓢ	=	LOT CREATED BY RECORDER'S PLAT
LINE LEGEND		
	=	Blow-up Boundary
	=	Property Line
	=	Lot Split Line
	=	Section Line
	=	Centerline
	=	Right-of-Way Line
	=	Corporation Line
SURVEY INDEX		
LND. 2-45	LND. 35-56	REC. 10-114
LND. 2-52	LND. 43-35	REC. 11-13
LND. 2-69	LND. 47-36	REC. 11-61
LND. 18-128	LND. 55-146	
LND. 22-94	LND. 58-162	RS 39
LND. 22-105		
LND. 22-151		
LND. 23-56		
LND. 28-162		

TERRA ACRES
SEC. 1
REC. 11-61
LOTS 1-19
27-28



PREPARED BY: MIAMI COUNTY ENGINEER'S MAP DEPARTMENT
PAUL P. HUELSKAMP, P.E., P.S., COUNTY ENGINEER
DATE: AUGUST 11, 2015 MB
REVISED: November 2, 2022 APALMER

SEE PLAT 27 FOR OWNERSHIP